

**Grundwasserstände**

**Nr. 1164 GIBZ Berufsschule - Zug**

**KANTON ZUG**

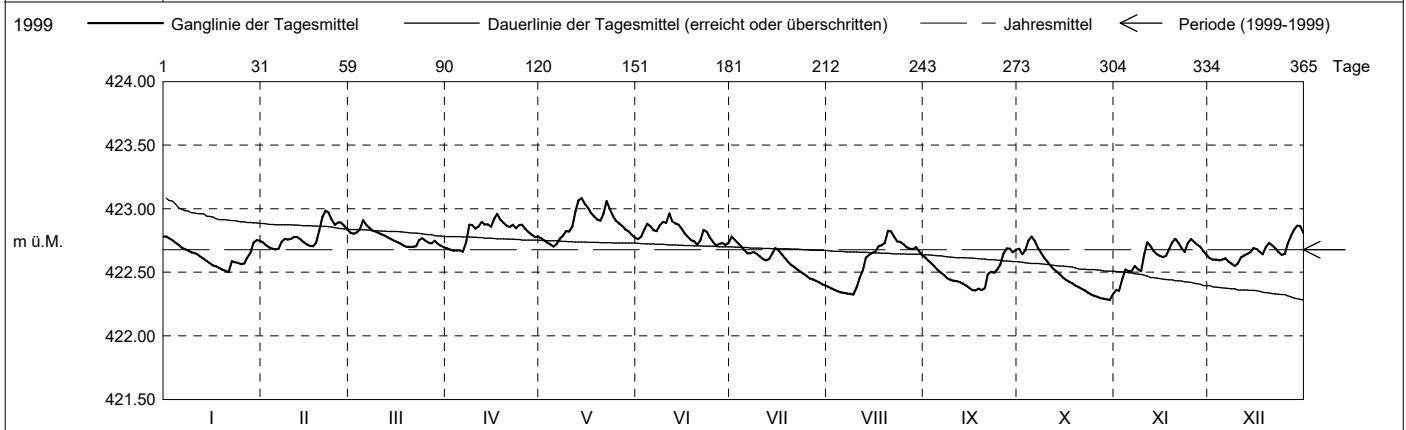
Koordinaten: 2'682'004' / 1'225'936'

Amt für Umwelt

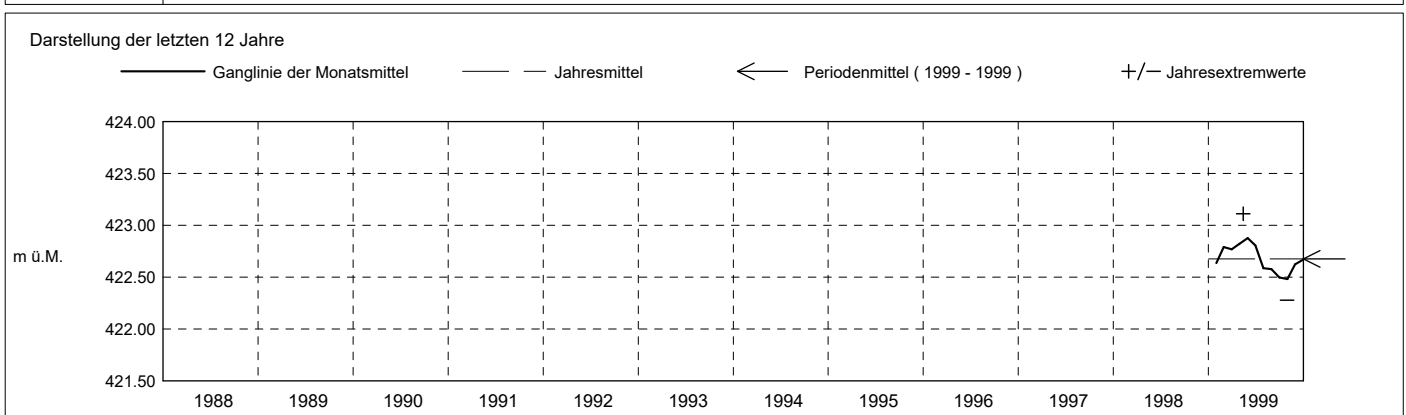
Abstichpunkt: 426.09 m ü.M. OK Terrain: 424.98 m ü.M.

1999	janvier	février	mars	avril	mai	juin	juillet	août	septembre	octobre	novembre	décembre	
Tagesmittel	1 422.78 +	422.73	422.81	422.69	422.77	422.76	422.78 +	422.39	422.61	422.68	422.36	422.61	1
	2 422.77	422.71	422.80	422.68	422.75	422.78	422.75	422.37	422.59	422.64	422.35 -	422.60	2
	3 422.75	422.70	422.81	422.67	422.73	422.83	422.73	422.36	422.57	422.67	422.44	422.60	3
	4 422.73	422.68 -	422.83	422.67	422.72	422.88	422.70	422.35	422.54	422.75	422.52	422.59	4
	5 422.72	422.68 -	422.91 +	422.67	422.70 -	422.86	422.67	422.34	422.51	422.78 +	422.51	422.60	5
	6 422.70	422.68 -	422.87	422.66 -	422.72	422.83	422.65	422.34	422.50	422.74	422.51	422.61	6
	7 422.68	422.74	422.85	422.74	422.77	422.82	422.65	422.33 -	422.47	422.69	422.55	422.58	7
	8 422.67	422.76	422.83	422.87	422.78	422.87	422.66	422.33 -	422.45	422.66	422.52	422.57	8
	9 422.66	422.76	422.82	422.87	422.82	422.90	422.64	422.33 -	422.44	422.61	422.51	422.55 -	9
	10 422.65	422.76	422.81	422.84	422.82	422.89	422.62	422.38	422.43	422.58	422.65	422.57	10
m ü.M.	11 422.64	422.78	422.80	422.86	422.86	422.96 +	422.80	422.46	422.43	422.55	422.74	422.62	11
	12 422.62	422.78	422.79	422.90	422.98	422.90	422.80	422.52	422.42	422.53	422.71	422.63	12
	13 422.61	422.76	422.77	422.88	423.06	422.88	422.61	422.61	422.41	422.51	422.67	422.64	13
	14 422.59	422.74	422.76	422.88	423.08 +	422.87	422.65	422.64	422.39	422.48	422.64	422.66	14
	15 422.57	422.72	422.75	422.86	423.04	422.84	422.69	422.65	422.38	422.46	422.63	422.69	15
	16 422.55	422.71	422.74	422.92	423.01	422.81	422.67	422.67	422.36 -	422.44	422.62	422.68	16
	17 422.55	422.70	422.72	422.96 +	422.97	422.78	422.64	422.70	422.36 -	422.43	422.63	422.66	17
	18 422.53	422.73	422.71	422.92	422.94	422.75	422.61	422.71	422.37	422.41	422.68	422.64	18
	19 422.52	422.82	422.70	422.89	422.91	422.94	422.58	422.73	422.36 -	422.40	422.73	422.70	19
	20 422.51	422.93	422.70	422.87	422.91	422.71 -	422.56	422.83 +	422.37	422.38	422.76 +	422.73	20
+ Maximum	21 422.50 -	422.98 +	422.70	422.86	422.96	422.75	422.54	422.82	422.49	422.37	422.73	422.71	21
	22 422.59	422.97	422.71	422.87	423.06	422.83	422.52	422.78	422.50	422.36	422.69	422.69	22
	23 422.58	422.91	422.75	422.84	423.00	422.82	422.50	422.74	422.50	422.34	422.66	422.66	23
	24 422.57	422.87	422.77	422.87	422.94	422.78	422.49	422.74	422.52	422.32	422.73	422.64	24
	25 422.57	422.89	422.75	422.87	422.91	422.74	422.47	422.72	422.56	422.32	422.76 +	422.64	25
	26 422.57	422.89	422.73	422.84	422.88	422.71 -	422.45	422.70	422.65	422.31	422.74	422.73	26
	27 422.61	422.87	422.73	422.82	422.86	422.72	422.44	422.68	422.69 +	422.30	422.72	422.79	27
	28 422.65	422.84	422.75	422.80	422.84	422.73	422.43	422.68	422.68	422.29	422.70	422.84	28
	29 422.73	422.72	422.72	422.78	422.82	422.72	422.42	422.70	422.66	422.29	422.66	422.86 +	29
	30 422.75	422.71	422.71	422.78	422.80	422.73	422.41	422.67	422.68	422.28 -	422.64	422.86 +	30
31 422.75	422.69 -			422.77		422.40 -	422.64		422.33		422.81	31	
Monatsmittel	422.63	422.79	422.77	422.82	422.88 +	422.81	422.59	422.58	422.50	422.48 -	422.63	422.67	m ü.M.
Spitze Datum	422.79 1.	422.99 21.	422.91 5.	422.97 17.	423.11 + 14.	422.98 11.	422.79 1.	422.87 20.	422.71 - 30.	422.80 5.	422.77 19.	422.88 29.	m ü.M.
Amplitude	0.29	0.31	0.22 -	0.31	0.42	0.29	0.40	0.54 +	0.36	0.52	0.42	0.34	m

Jahr Mittel: 422.68 Spitze: 423.11 (14.05.1999) Minimum: 422.28 (30.10.1999) Amplitude: 0.83



Periode	1999 - 1999 ( 0 Jahre )												
Monatsmittel	422.63	422.79	422.77	422.82	422.88 +	422.81	422.59	422.58	422.50	422.48 -	422.63	422.67	m ü.M.
Monats-Spitze Jahr	422.79 1999	422.99 1999	422.91 1999	422.97 1999	423.11 + 1999	422.98 1999	422.79 1999	422.87 1999	422.71 - 1999	422.80 1999	422.77 1999	422.88 1999	m ü.M.
Monats-Minimum Jahr	422.50 1999	422.67 1999	422.69 + 1999	422.66 1999	422.69 + 1999	422.69 + 1999	422.39 1999	422.32 1999	422.35 1999	422.28 - 1999	422.35 1999	422.54 1999	m ü.M.
Monats-Amplitude Jahr	0.29 1999	0.32 1999	0.22 - 1999	0.31 1999	0.42 1999	0.29 1999	0.40 1999	0.55 + 1999	0.36 1999	0.52 1999	0.42 1999	0.34 1999	m ü.M.
Periode	Mittel: 422.68 Spitze: 423.11 (14.05.1999) Minimum: 422.28 (30.10.1999) Amplitude: 0.83												



**Grundwasserstände**

**Nr. 1164 GIBZ Berufsschule - Zug**

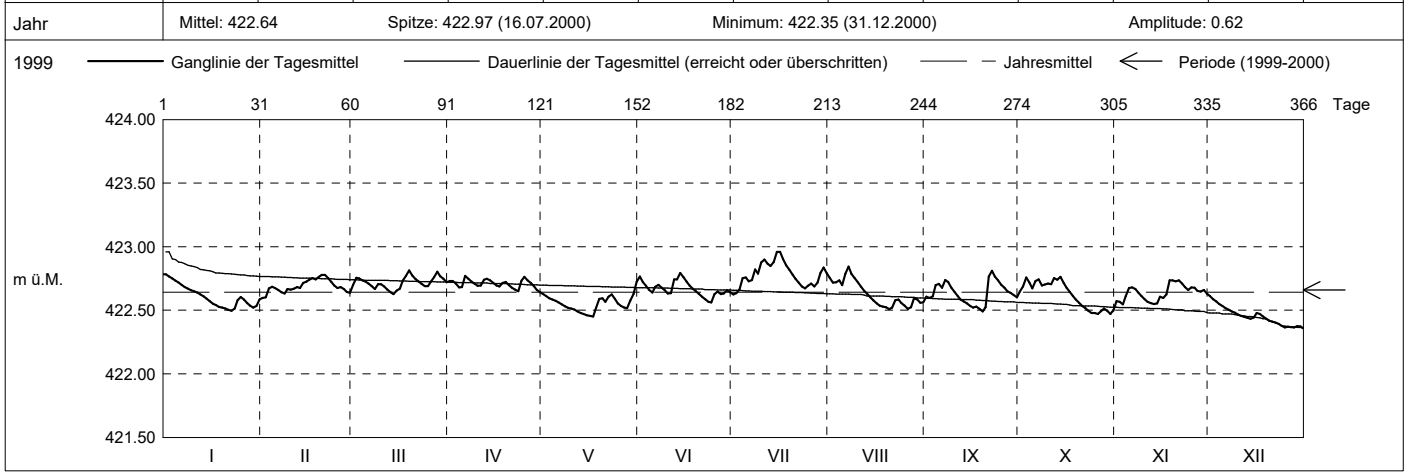
**KANTON ZUG**

Koordinaten: 2'682'004' / 1'225'936'

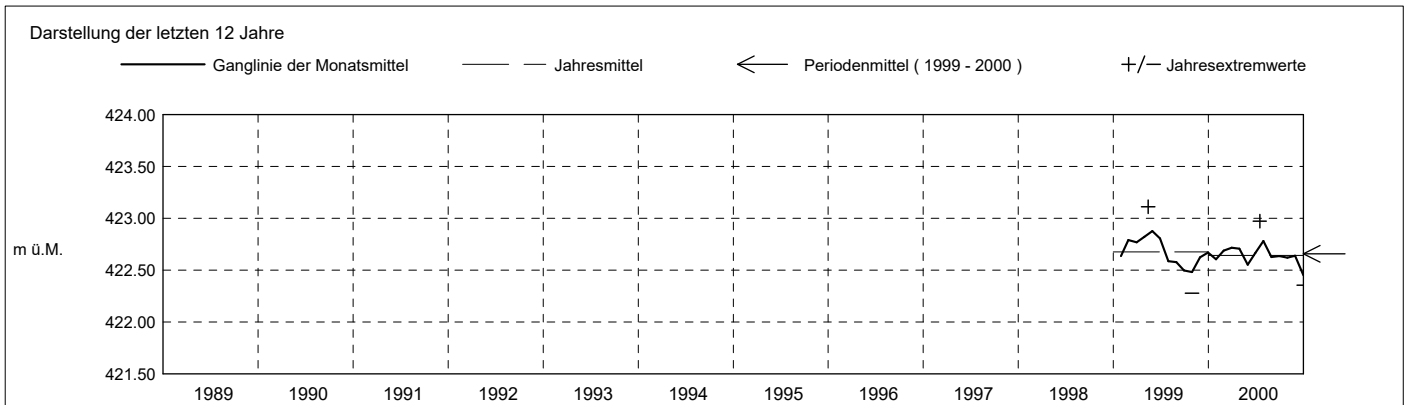
Amt für Umwelt

Abstichpunkt: 426.09 m ü.M. OK Terrain: 424.98 m ü.M.

2000		janvier	février	mars	avril	mai	juin	juillet	août	septembre	octobre	novembre	décembre	
Tagesmittel	1	422.78 +	422.60 -	422.70	422.73	422.63	422.77	422.63 -	422.76	422.61	422.65	422.57	422.61 +	1
	2	422.76	422.60 -	422.76	422.73	422.61	422.72	422.63 -	422.72	422.60	422.69	422.57	422.59	2
	3	422.75	422.67	422.75	422.71	422.59	422.69	422.66	422.72	422.61	422.76 +	422.55 -	422.57	3
	4	422.73	422.68	422.74	422.68	422.58	422.66	422.75	422.73	422.70	422.72	422.61	422.55	4
	5	422.72	422.67	422.73	422.68	422.57	422.64	422.76	422.70	422.71	422.67	422.67	422.53	5
	6	422.70	422.66	422.71	422.77 +	422.56	422.69	422.73	422.79	422.68	422.73	422.68	422.52	6
	7	422.68	422.64	422.69	422.75	422.55	422.70	422.74	422.84 +	422.74	422.74	422.67	422.50	7
	8	422.67	422.63	422.67	422.73	422.53	422.68	422.82	422.79	422.72	422.69	422.64	422.49	8
	9	422.66	422.67	422.70	422.71	422.52	422.66	422.79	422.75	422.68	422.70	422.61	422.48	9
	10	422.65	422.66	422.71	422.69	422.51	422.63	422.88	422.72	422.64	422.71	422.59	422.47	10
m ü.M.	11	422.64	422.67	422.69	422.69	422.51	422.63	422.90	422.68	422.61	422.71	422.57	422.46	11
	12	422.63	422.68	422.66	422.74	422.49	422.74	422.86	422.65	422.58	422.75	422.56	422.45	12
	13	422.61	422.68	422.64	422.75	422.48	422.74	422.85	422.63	422.57	422.74	422.55 -	422.44	13
	14	422.59	422.71	422.63 -	422.73	422.47	422.79 +	422.88	422.60	422.55	422.76 +	422.55 -	422.43	14
	15	422.57	422.73	422.65	422.72	422.46	422.76	422.96 +	422.58	422.53	422.72	422.61	422.44	15
	16	422.55	422.74	422.67	422.70	422.45 -	422.72	422.96 +	422.55	422.52	422.68	422.60	422.48	16
	17	422.54	422.75	422.63	422.69	422.45 -	422.70	422.90	422.54	422.53	422.64	422.62	422.47	17
	18	422.53	422.74	422.77	422.71	422.52	422.67	422.85	422.53	422.51	422.61	422.73	422.45	18
	19	422.52	422.76	422.81 +	422.72	422.59	422.65	422.82	422.52	422.49 -	422.58	422.74 +	422.43	19
	20	422.51	422.78 +	422.77	422.70	422.59	422.63	422.78	422.51 -	422.52	422.56	422.73	422.42	20
+ Maximum	21	422.50 -	422.78 +	422.75	422.68	422.57	422.61	422.75	422.52	422.77	422.54	422.73	422.41	21
	22	422.50 -	422.75	422.73	422.66	422.59	422.59	422.72	422.58	422.81 +	422.52	422.71	422.40	22
	23	422.51	422.72	422.71	422.65	422.62	422.57	422.69	422.58	422.77	422.50	422.68	422.39	23
	24	422.58	422.70	422.69	422.73	422.59	422.56 -	422.67	422.56	422.73	422.48	422.66	422.38	24
	25	422.60	422.68	422.69	422.76	422.55	422.63	422.69	422.54	422.70	422.48	422.68	422.36 -	25
	26	422.58	422.68	422.72	422.74	422.53	422.65	422.71	422.51 -	422.68	422.47 -	422.68	422.37	26
	27	422.56	422.67	422.76	422.71	422.52	422.63	422.69	422.59	422.65	422.49	422.65	422.37	27
	28	422.54	422.64	422.80	422.69	422.52	422.63	422.72	422.59	422.64	422.51	422.65	422.36 -	28
	29	422.52	422.64	422.77	422.66	422.58	422.66	422.79	422.59	422.62	422.50	422.66	422.38	29
	30	422.53	422.75	422.75	422.64 -	422.63	422.64	422.83	422.56	422.60	422.47 -	422.63	422.37	30
31	422.59	422.72	422.72	422.72 +	422.72 +	422.72 +	422.79	422.56	422.60	422.50	422.63	422.36 -	31	
Monatsmittel	422.61	422.69	422.72	422.71	422.55	422.67	422.78 +	422.63	422.64	422.62	422.64	422.45 -	m ü.M.	
Spitze Datum	422.80 1.	422.78 21.	422.82 28.	422.80 6.	422.78 31.	422.80 14.	422.97 + 16.	422.86 7.	422.86 21.	422.77 14.	422.75 19.	422.62 - 1.	m ü.M.	
Amplitude	0.30	0.20	0.20	0.16 -	0.34	0.24	0.36	0.37	0.38 +	0.31	0.21	0.26	m	
Jahr	Mittel: 422.64		Spitze: 422.97 (16.07.2000)				Minimum: 422.35 (31.12.2000)				Amplitude: 0.62			



Periode	1999 - 2000 ( 1 Jahre )												
Monatsmittel	422.62	422.74	422.74	422.76 +	422.71	422.74	422.68	422.60	422.57	422.55 -	422.63	422.56	m ü.M.
Monats-Spitze Jahr	422.80 2000	422.99 1999	422.91 1999	422.97 1999	423.11 + 1999	422.98 1999	422.97 2000	422.87 1999	422.86 2000	422.80 1999	422.77 - 1999	422.88 1999	m ü.M.
Monats-Minimum Jahr	422.49 2000	422.58 2000	422.62 2000	422.64 + 2000	422.44 2000	422.56 2000	422.39 1999	422.32 1999	422.35 1999	422.28 - 1999	422.35 1999	422.35 2000	m ü.M.
Monats-Amplitude Jahr	0.31 2000	0.32 1999	0.22 - 1999	0.31 1999	0.42 1999	0.29 1999	0.40 1999	0.55 + 1999	0.38 2000	0.52 1999	0.42 1999	0.34 1999	m ü.M.
Periode	Mittel: 422.66		Spitze: 423.11 (14.05.1999)				Minimum: 422.28 (30.10.1999)				Amplitude: 0.83		



**Grundwasserstände**

**Nr. 1164 GIBZ Berufsschule - Zug**

**KANTON ZUG**

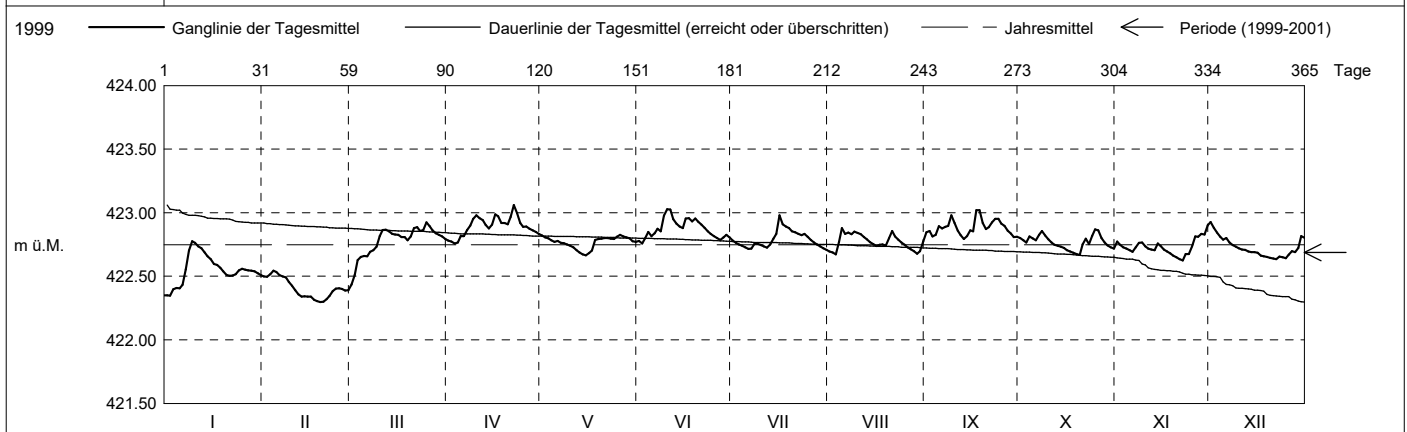
Koordinaten: 2'682'004' / 1'225'936'

Amt für Umwelt

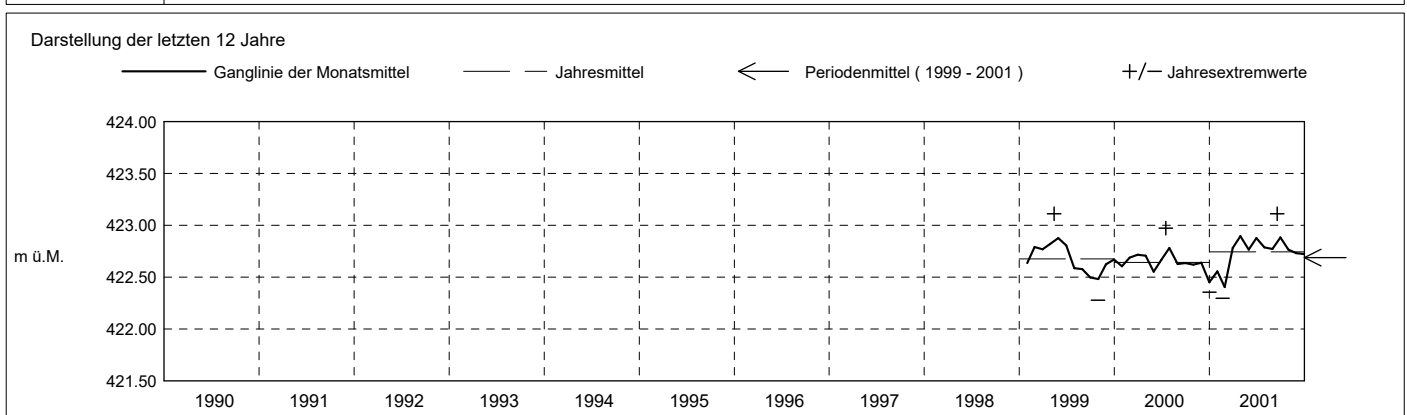
Abstichpunkt: 426.09 m ü.M. OK Terrain: 424.98 m ü.M.

2001	janvier	février	mars	avril	mai	juin	juillet	août	septembre	octobre	novembre	décembre	
Tagesmittel	1 422.35 -	422.50	422.43 -	422.78	422.82	422.78	422.78	422.70	422.85	422.80	422.77	422.93 +	1
	2 422.35 -	422.49	422.51	422.77	422.81	422.76 -	422.76	422.69	422.86	422.78	422.75	422.88	2
	3 422.40	422.52	422.63	422.76 -	422.80	422.80	422.75	422.67 -	422.81	422.77	422.73	422.84	3
	4 422.41	422.54 +	422.65	422.77	422.78	422.85	422.74	422.77	422.83	422.81	422.72	422.81	4
	5 422.44	422.53	422.66	422.82	422.77	422.82	422.73	422.88 +	422.89	422.80	422.71	422.79	5
	6 422.43	422.51	422.66	422.82	422.78	422.84	422.71 -	422.83	422.88	422.78	422.69	422.80	6
	7 422.55	422.50	422.69	422.86	422.76	422.87	422.72	422.84	422.89	422.83	422.73	422.77	7
	8 422.70	422.49	422.70	422.90	422.76	422.85	422.75	422.83	422.90	422.86	422.76	422.75	8
	9 422.77 +	422.45	422.73	422.95	422.75	422.98	422.76	422.85	422.98	422.82	422.77	422.73	9
	10 422.76	422.43	422.82	422.98	422.74	423.03 +	422.74	422.84	422.92	422.79	422.74	422.72	10
	11 422.74	422.39	422.86	422.96	422.73	423.03 +	422.74	422.83	422.86	422.77	422.72	422.71	11
	12 422.72	422.36	422.87	422.94	422.70	422.95	422.73	422.81	422.82	422.75	422.71	422.71	12
m ü.M.	13 422.69	422.34	422.85	422.90	422.69	422.91	422.75	422.79	422.79 -	422.74	422.70	422.69	13
	14 422.66	422.34	422.83	422.88	422.67 -	422.89	422.80	422.77	422.82	422.73	422.76	422.69	14
	15 422.63	422.34	422.83	422.91	422.67 -	422.88	422.83	422.75	422.86	422.72	422.74	422.69	15
	16 422.60	422.34	422.83	422.99	422.68	422.95	422.98 +	422.74	422.85	422.71	422.71	422.68	16
	17 422.59	422.32	422.81	422.97	422.70	422.96	422.91	422.75	423.02 +	422.70	422.70	422.66	17
	18 422.57	422.31	422.81	422.92	422.79	422.93	422.89	422.75	423.02 +	422.68	422.68	422.66	18
	19 422.54	422.30 -	422.78	422.92	422.79	422.95	422.88	422.74	422.92	422.67 -	422.66	422.65	19
	20 422.51	422.30 -	422.81	422.91	422.79	422.93	422.85	422.80	422.87	422.67 -	422.65	422.64 -	20
	21 422.50	422.32	422.88	422.97	422.80	422.91	422.85	422.86	422.89	422.75	422.63	422.64 -	21
	22 422.51	422.34	422.89	423.06 +	422.80	422.88	422.83	422.82	422.92	422.79	422.62 -	422.64 -	22
	23 422.52	422.38	422.86	423.00	422.80	422.85	422.82	422.79	422.95	422.75	422.67	422.65	23
	24 422.55	422.40	422.86	422.92	422.79	422.83	422.83	422.77	422.95	422.82	422.67	422.65	24
+ Maximum	25 422.56	422.40	422.92 +	422.89	422.81	422.81	422.81	422.75	422.92	422.87 +	422.73	422.64 -	25
- Minimum	26 422.55	422.40	422.89	422.89	422.83 +	422.80	422.79	422.73	422.90	422.86	422.81	422.67	26
	27 422.51	422.39	422.86	422.87	422.81	422.78	422.77	422.71	422.86	422.80	422.81	422.70	27
	28 422.54	422.39	422.84	422.86	422.81	422.81	422.75	422.70	422.84	422.77	422.83	422.69	28
	29 422.54		422.83	422.85	422.80	422.83	422.73	422.68	422.81	422.74	422.83	422.72	29
	30 422.52		422.81	422.83	422.78	422.81	422.72	422.70	422.81	422.73	422.90 +	422.81	30
	31 422.51		422.79	422.77	422.77	422.71 -	422.77	422.77	422.81	422.72	422.80	422.80	31
Monatsmittel	422.56	422.40 -	422.78	422.89 +	422.77	422.88	422.79	422.77	422.88	422.77	422.73	422.72	m ü.M.
Spitze Datum	422.78 9.	422.55 - 4.	422.94 25.	423.08 22.	422.84 25.	423.08 10.	423.00 16.	422.89 5.	423.11 + 17.	422.90 25.	422.96 30.	422.96 1.	m ü.M.
Amplitude	0.44	0.25	0.52 +	0.33	0.17 -	0.33	0.31	0.22	0.33	0.23	0.34	0.33	m

Jahr Mittel: 422.75 Spitze: 423.11 (17.09.2001) Minimum: 422.30 (20.02.2001) Amplitude: 0.82



Periode	1999 - 2001 ( 2 Jahre )												
Monatsmittel	422.60 -	422.63	422.76	422.81 +	422.73	422.78	422.72	422.66	422.67	422.62	422.66	422.61	m ü.M.
Monats-Spitze Jahr	422.80 - 2000	422.99 1999	422.94 2001	423.08 2001	423.11 + 1999	423.08 2001	423.00 2001	422.89 2001	423.11 + 2001	422.90 2001	422.96 2001	422.96 2001	m ü.M.
Monats-Minimum Jahr	422.34 2001	422.30 2001	422.42 2001	422.64 + 2000	422.44 2000	422.56 2000	422.39 1999	422.32 1999	422.35 1999	422.28 - 1999	422.35 1999	422.35 2000	m ü.M.
Monats-Amplitude Jahr	0.44 2001	0.32 - 1999	0.52 2001	0.33 2001	0.42 1999	0.33 2001	0.40 1999	0.55 + 1999	0.38 2000	0.52 1999	0.42 1999	0.34 1999	m ü.M.
Periode	Mittel: 422.69 Spitze: 423.11 (17.09.2001) Minimum: 422.28 (30.10.1999) Amplitude: 0.83												



**Grundwasserstände**

**Nr. 1164 GIBZ Berufsschule - Zug**

**KANTON ZUG**

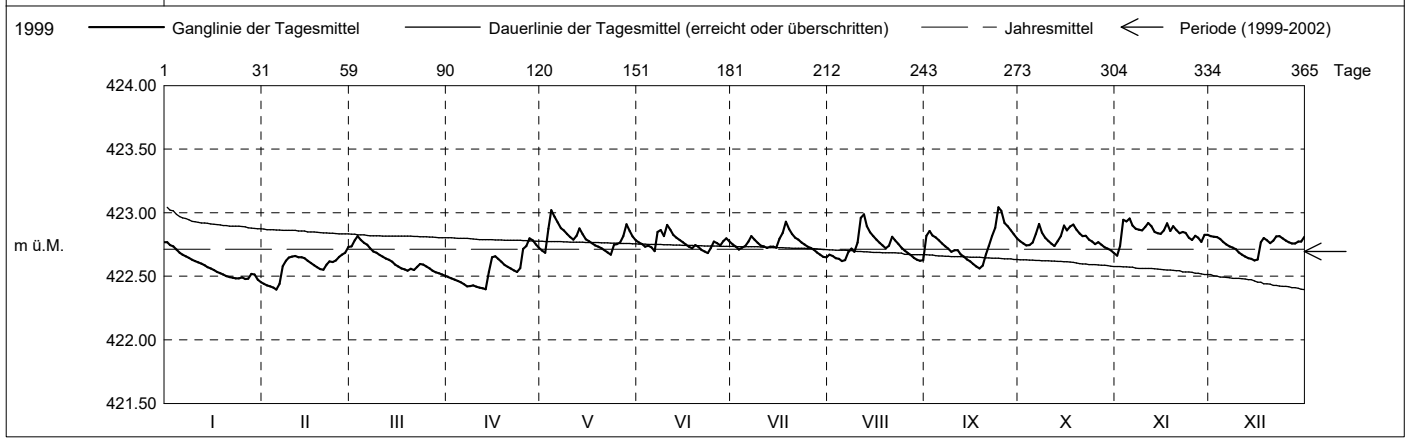
Koordinaten: 2'682'004' / 1'225'936'

Amt für Umwelt

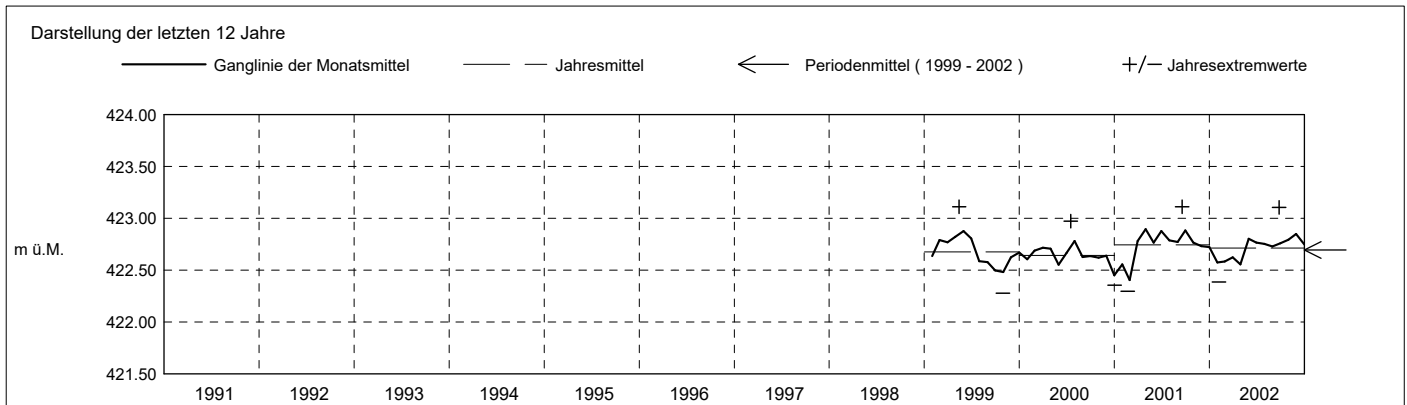
Abstichpunkt: 426.09 m ü.M. OK Terrain: 424.98 m ü.M.

2002	janvier	février	mars	avril	mai	juin	juillet	août	septembre	octobre	novembre	décembre	
Tagesmittel	1 422.77 +	422.44	422.73	422.49	422.70	422.77	422.75	422.67	422.82	422.77	422.66 -	422.81	1
	2 422.75	422.43	422.78	422.48	422.68	422.75	422.73	422.66	422.86	422.76	422.74	422.81	2
	3 422.73	422.42	422.81 +	422.47	422.87	422.73	422.71	422.64	422.82	422.74	422.94	422.81	3
	4 422.71	422.41	422.79	422.46	423.02 +	422.74	422.72	422.64	422.81	422.75	422.93	422.79	4
	5 422.68	422.40 -	422.76	422.45	422.97	422.73	422.74	422.62 -	422.78	422.77	422.95 +	422.77	5
	6 422.67	422.44	422.75	422.44	422.92	422.70	422.77	422.63	422.76	422.83	422.90	422.75	6
	7 422.66	422.58	422.72	422.42	422.88	422.85	422.82	422.69	422.74	422.91 +	422.87	422.73	7
	8 422.65	422.62	422.70	422.42	422.86	422.86	422.79	422.72	422.84	422.84	422.86	422.72	8
	9 422.63	422.65	422.68	422.43	422.83	422.82	422.76	422.69	422.69	422.80	422.86	422.71	9
	10 422.62	422.65	422.67	422.42	422.81	422.90 +	422.74	422.77	422.71	422.78	422.89	422.69	10
m ü.M.	11 422.61	422.66	422.66	422.41	422.79	422.87	422.74	422.96	422.70	422.76	422.92	422.67	11
	12 422.60	422.65	422.64	422.40 -	422.82	422.82	422.72	422.99 +	422.67	422.74	422.89	422.65	12
	13 422.59	422.65	422.63	422.40 -	422.88	422.80	422.73	422.89	422.65	422.78	422.85	422.64	13
	14 422.57	422.64	422.61	422.53	422.83	422.78	422.73	422.85	422.63	422.82	422.84	422.64	14
	15 422.56	422.62	422.59	422.65	422.79	422.77	422.72	422.82	422.62	422.90	422.83	422.63 -	15
	16 422.55	422.61	422.58	422.66	422.77	422.75	422.79	422.79	422.60	422.86	422.86	422.63 -	16
	17 422.53	422.59	422.56	422.64	422.76	422.73	422.84	422.76	422.58	422.89	422.92	422.77	17
	18 422.52	422.57	422.55	422.61	422.74	422.72	422.93 +	422.74	422.56 -	422.91 +	422.86	422.80	18
	19 422.51	422.56	422.54	422.59	422.73	422.75	422.87	422.72	422.58	422.87	422.89	422.78	19
	20 422.50	422.55	422.56	422.57	422.72	422.73	422.83	422.74	422.67	422.84	422.86	422.76	20
+ Maximum	21 422.49	422.59	422.55	422.56	422.70	422.71	422.80	422.81	422.74	422.82	422.84	422.78	21
	22 422.48	422.62	422.57	422.55	422.69	422.70	422.79	422.82	422.82	422.82	422.85	422.81	22
	23 422.48	422.61	422.60	422.53	422.67 -	422.68 -	422.77	422.76	422.88	422.79	422.84	422.82 +	23
	24 422.48	422.62	422.59	422.56	422.75	422.72	422.75	422.72	423.04 +	422.77	422.80	422.80	24
	25 422.49	422.65	422.58	422.72	422.75	422.77	422.73	422.70	423.02	422.75	422.79	422.78	25
	26 422.48	422.67	422.56	422.74	422.76	422.76	422.72	422.68	422.92	422.77	422.82	422.77	26
	27 422.48	422.68	422.54	422.80 +	422.82	422.74	422.71	422.82	422.89	422.75	422.80	422.76	27
	28 422.52	422.73 +	422.53	422.78	422.91	422.78	422.69	422.65	422.86	422.73	422.77	422.76	28
	29 422.51		422.52	422.75	422.86	422.80	422.67	422.63	422.83	422.72	422.83	422.77	29
	30 422.47		422.51	422.73	422.81	422.77	422.65 -	422.62 -	422.80	422.70	422.82	422.77	30
31 422.45 -		422.50 -	422.78	422.81	422.77	422.65 -	422.63 -	422.80	422.70	422.82	422.81	31	
Monatsmittel	422.57	422.58	422.63	422.56 -	422.80	422.77	422.75	422.73	422.76	422.79	422.85 +	422.75	m ü.M.
Spitze Datum	422.78 1.	422.74 - 28.	422.82 2.	422.82 27.	423.04 4.	422.94 10.	422.95 18.	423.04 11.	423.10 + 24.	422.94 17.	422.97 5.	422.83 31.	m ü.M.
Amplitude	0.33	0.36	0.32	0.42	0.38	0.27	0.30	0.43	0.56 +	0.27	0.32	0.21 -	m

Jahr Mittel: 422.71 Spitze: 423.10 (24.09.2002) Minimum: 422.39 (06.02.2002) Amplitude: 0.72



Periode	1999 - 2002 (3 Jahre)												
Monatsmittel	422.59 -	422.62	422.72	422.74	422.75	422.78 +	422.73	422.68	422.69	422.67	422.71	422.65	m ü.M.
Monats-Spitze Jahr	422.80 - 2000	422.99 1999	422.94 2001	423.08 2001	423.11 + 1999	423.08 2001	423.00 2001	423.04 2002	423.11 + 2001	422.94 2002	422.97 2002	422.96 2001	m ü.M.
Monats-Minimum Jahr	422.34 2001	422.30 2001	422.42 2001	422.40 2002	422.44 2000	422.56 + 2000	422.39 1999	422.32 1999	422.35 1999	422.28 - 1999	422.35 1999	422.35 2000	m ü.M.
Monats-Amplitude Jahr	0.44 2001	0.35 2002	0.52 2001	0.42 2002	0.42 1999	0.33 - 2001	0.40 1999	0.55 + 1999	0.55 + 2002	0.52 1999	0.42 1999	0.34 1999	m ü.M.
Periode	Mittel: 422.69 Spitze: 423.11 (17.09.2001) Minimum: 422.28 (30.10.1999) Amplitude: 0.83												



**Grundwasserstände**

**Nr. 1164 GIBZ Berufsschule - Zug**

**KANTON ZUG**

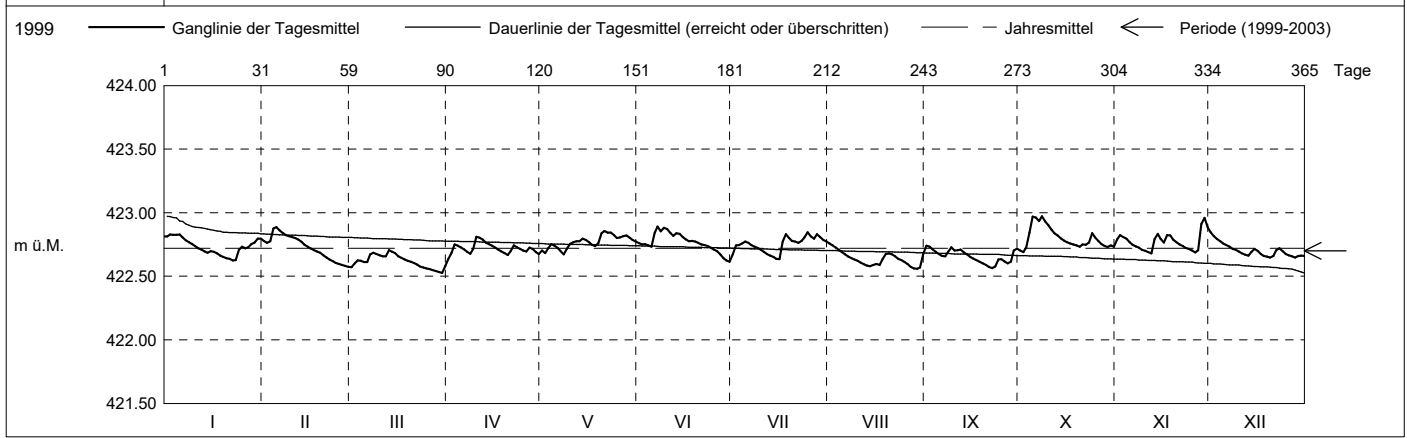
Koordinaten: 2'682'004' / 1'225'936'

Amt für Umwelt

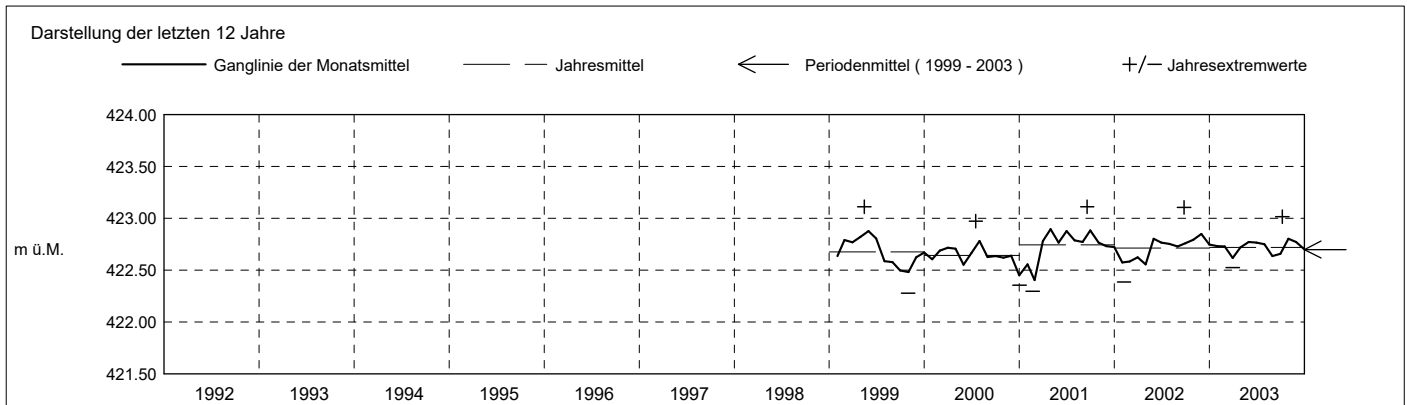
Abstichpunkt: 426.09 m ü.M. OK Terrain: 424.98 m ü.M.

2003	janvier	février	mars	avril	mai	juin	juillet	août	septembre	octobre	novembre	décembre	
Tagesmittel	1 422.81	422.78	422.57	422.63 -	422.70	422.76	422.67	422.76 +	422.74 +	422.70	422.79	422.85 +	1
	2 422.83 +	422.76	422.60	422.68	422.68	422.75	422.74	422.74	422.73	422.69 -	422.82	422.82	2
	3 422.83 +	422.78	422.62	422.75	422.72	422.75	422.75	422.73	422.71	422.73	422.81	422.79	3
	4 422.83 +	422.87	422.62	422.74	422.75	422.74	422.76	422.71	422.69	422.84	422.80	422.77	4
	5 422.83 +	422.89 +	422.61	422.73	422.74	422.73	422.77	422.69	422.68	422.97 +	422.77	422.76	5
	6 422.80	422.86	422.61	422.71	422.72	422.84	422.76	422.67	422.66	422.96	422.75	422.75	6
	7 422.78	422.84	422.67	422.69	422.69	422.89 +	422.74	422.65	422.66	422.93	422.74	422.73	7
	8 422.77	422.82	422.68	422.68	422.67 -	422.85	422.73	422.64	422.69	422.97 +	422.72	422.72	8
	9 422.75	422.81	422.68	422.71	422.72	422.88	422.72	422.63	422.73	422.93	422.71	422.71	9
	10 422.74	422.81	422.67	422.81 +	422.76	422.87	422.71	422.62	422.70	422.90	422.70	422.70	10
	11 422.72	422.80	422.66	422.80	422.77	422.84	422.69	422.61	422.71	422.87	422.69	422.68	11
	12 422.71	422.79	422.66	422.79	422.78	422.82	422.67	422.59	422.71	422.84	422.68 -	422.67	12
m ü.M.	13 422.70	422.77	422.70 +	422.77	422.77	422.84	422.66	422.58	422.69	422.82	422.66	422.66	13
	14 422.69	422.75	422.69	422.75	422.80	422.83	422.65	422.58	422.67	422.80	422.83	422.69	14
	15 422.70	422.73	422.68	422.74	422.79	422.81	422.64	422.59	422.65	422.78	422.79	422.71	15
	16 422.69	422.72	422.66	422.72	422.77	422.79	422.63 -	422.60	422.64	422.77	422.77	422.70	16
	17 422.68	422.71	422.64	422.71	422.75	422.77	422.77	422.59	422.63	422.76	422.82	422.68	17
	18 422.66	422.70	422.63	422.70	422.74	422.78	422.83	422.63	422.61	422.75	422.82	422.66	18
	19 422.65	422.68	422.62	422.68	422.76	422.77	422.80	422.68	422.60	422.74	422.79	422.65 -	19
	20 422.64	422.66	422.61	422.67	422.84	422.76	422.78	422.68	422.59	422.73	422.77	422.65 -	20
	21 422.64	422.65	422.60	422.70	422.86 +	422.75	422.77	422.67	422.58	422.75	422.75	422.66	21
	22 422.62 -	422.63	422.59	422.74	422.84	422.74	422.76	422.66	422.56 -	422.75	422.74	422.71	22
	23 422.63	422.62	422.58	422.73	422.84	422.74	422.78	422.64	422.58	422.77	422.72	422.72	23
	24 422.71	422.61	422.57	422.72	422.82	422.72	422.81	422.63	422.63	422.84	422.72	422.70	24
	25 422.73	422.60	422.56	422.70	422.80	422.71	422.84 +	422.61	422.63	422.80	422.70	422.68	25
+ Maximum	26 422.72	422.59	422.56	422.69	422.80	422.70	422.81	422.60	422.62	422.78	422.69	422.67	26
	27 422.73	422.58	422.55	422.63	422.82	422.67	422.80	422.60	422.60	422.75	422.67	422.66	27
- Minimum	28 422.75	422.57 -	422.54	422.71	422.82	422.64	422.83	422.56 -	422.61	422.74	422.91	422.65 -	28
	29 422.76		422.53 -	422.69	422.80	422.62	422.81	422.56 -	422.70	422.73	422.96 +	422.66	29
	30 422.79		422.53 -	422.67	422.79	422.61 -	422.79	422.57	422.72	422.74	422.88	422.66	30
	31 422.80		422.58		422.77		422.77	422.68		422.73		422.66	31
Monatsmittel	422.73	422.73	422.62 -	422.72	422.77	422.77	422.75	422.64	422.66	422.80 +	422.77	422.70	m ü.M.
Spitze Datum	422.85 2.	422.90 4.	422.71 - 13.	422.82 10.	422.86 21.	422.91 9.	422.85 24.	422.76 1.	422.74 1.	423.02 + 8.	422.99 29.	422.86 1.	m ü.M.
Amplitude	0.24	0.33	0.18 -	0.19	0.20	0.30	0.25	0.21	0.18 -	0.34 +	0.31	0.22	m

Jahr Mittel: 422.72 Spitze: 423.02 (08.10.2003) Minimum: 422.52 (31.03.2003) Amplitude: 0.49



Periode	1999 - 2003 ( 4 Jahre )												
Monatsmittel	422.62 -	422.64	422.70	422.74	422.75	422.78 +	422.73	422.67	422.69	422.69	422.72	422.66	m ü.M.
Monats-Spitze Jahr	422.85 - 2003	422.99 1999	422.94 2001	423.08 2001	423.11 + 1999	423.08 2001	423.00 2001	423.04 2002	423.11 + 2001	423.02 2003	422.99 2003	422.96 2001	m ü.M.
Monats-Minimum Jahr	422.34 2001	422.30 2001	422.42 2001	422.40 2002	422.44 2000	422.56 + 2000	422.39 1999	422.32 1999	422.35 1999	422.28 - 1999	422.35 1999	422.35 2000	m ü.M.
Monats-Amplitude Jahr	0.44 2001	0.35 2002	0.52 2001	0.42 2002	0.42 1999	0.33 - 2001	0.40 1999	0.55 + 1999	0.55 + 2002	0.52 1999	0.42 1999	0.34 1999	m ü.M.
Periode	Mittel: 422.70 Spitze: 423.11 (17.09.2001) Minimum: 422.28 (30.10.1999) Amplitude: 0.83												



**Grundwasserstände**

**Nr. 1164 GIBZ Berufsschule - Zug**

**KANTON ZUG**

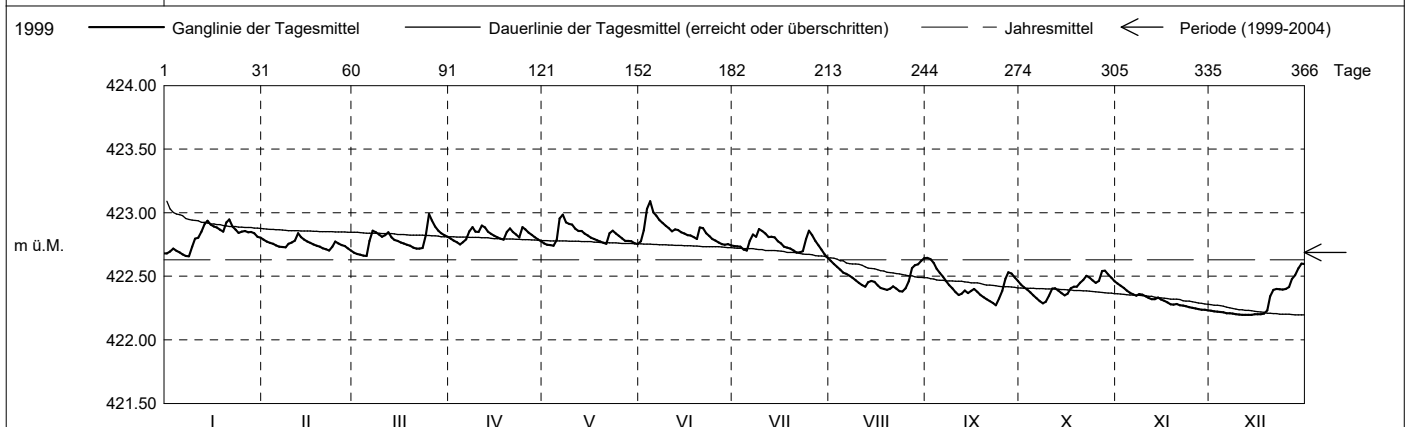
Koordinaten: 2'682'004' / 1'225'936'

Amt für Umwelt

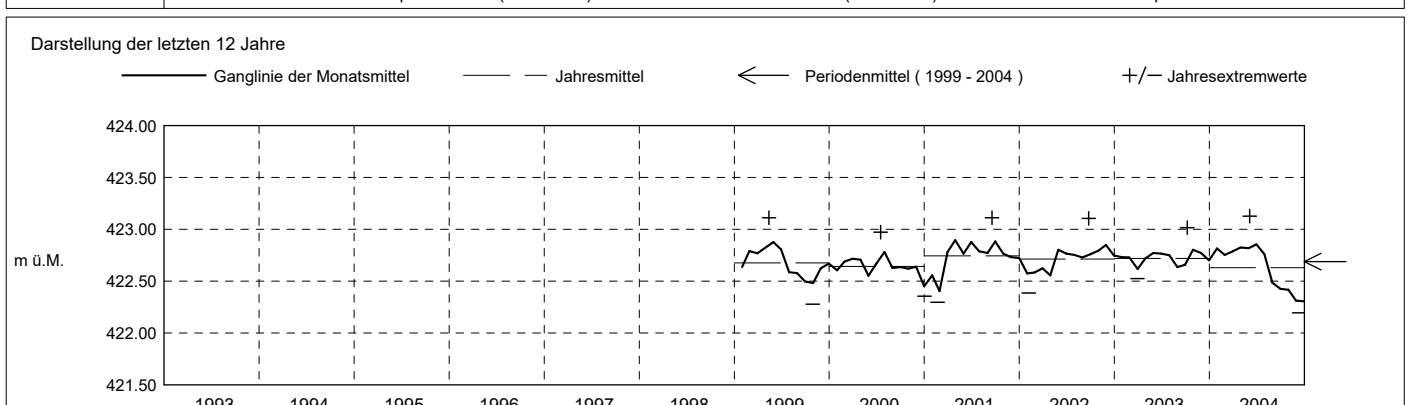
Abstichpunkt: 426.09 m ü.M. OK Terrain: 424.98 m ü.M.

2004	janvier	février	mars	avril	mai	juin	juillet	août	septembre	octobre	novembre	décembre		
Tagesmittel	1	422.68	422.79	422.69	422.79	422.76	422.78	422.74	422.62	422.64 +	422.44	422.44 +	422.23	1
	2	422.69	422.77	422.68	422.78	422.75	422.86	422.74	422.60	422.63	422.41	422.42	422.22	2
	3	422.72	422.76	422.67	422.77	422.74 -	423.03	422.73	422.57	422.60	422.39	422.41	422.22	3
	4	422.70	422.75	422.66 -	422.75 -	422.74 -	423.09 +	422.71	422.55	422.56	422.37	422.39	422.22	4
	5	422.69	422.74	422.66 -	422.77	422.78	423.00	422.70	422.53	422.53	422.35	422.37	422.22	5
	6	422.67	422.73	422.78	422.79	422.95	422.98	422.78	422.52	422.49	422.33	422.36	422.21	6
	7	422.66 -	422.73	422.86	422.85	422.99 +	422.94	422.83	422.50	422.46	422.30	422.35	422.21	7
	8	422.66 -	422.73	422.84	422.89	422.92	422.92	422.81	422.49	422.43	422.29 -	422.36	422.21	8
	9	422.73	422.76	422.83	422.85	422.91	422.90	422.87 +	422.47	422.40	422.30	422.35	422.20 -	9
	10	422.79	422.76	422.81	422.85	422.91	422.88	422.86	422.45	422.38	422.35	422.34	422.20 -	10
m ü.M.	11	422.80	422.78	422.82	422.90 +	422.87	422.85	422.84	422.43	422.35	422.40	422.33	422.20 -	11
	12	422.85	422.84 +	422.84	422.88	422.86	422.87	422.81	422.42	422.36	422.40	422.32	422.20 -	12
	13	422.91	422.81	422.81	422.85	422.86	422.86	422.81	422.45	422.39	422.39	422.32	422.20 -	13
	14	422.94	422.79	422.79	422.83	422.84	422.84	422.80	422.46	422.37	422.37	422.33	422.20 -	14
	15	422.91	422.77	422.78	422.82	422.82	422.84	422.78	422.45	422.39	422.35	422.32	422.20 -	15
	16	422.89	422.76	422.77	422.81	422.80	422.82	422.76	422.43	422.40	422.36	422.31	422.20 -	16
	17	422.88	422.75	422.76	422.79	422.79	422.82	422.73	422.41	422.38	422.41	422.29	422.20 -	17
	18	422.87	422.74	422.75	422.79	422.78	422.81	422.72	422.40	422.35	422.42	422.28	422.21	18
	19	422.85	422.73	422.74	422.85	422.77	422.79	422.72	422.39	422.34	422.42	422.28	422.23	19
	20	422.92	422.72	422.73	422.88	422.76	422.88	422.70	422.40	422.32	422.45	422.28	422.34	20
+ Maximum	21	422.95 +	422.71	422.72	422.85	422.76	422.88	422.69	422.42	422.30	422.47	422.27	422.39	21
	22	422.89	422.70 -	422.72	422.83	422.84	422.84	422.69	422.40	422.29	422.50	422.27	422.40	22
	23	422.87	422.73	422.72	422.81	422.86	422.81	422.70	422.38 -	422.27 -	422.49	422.26	422.40	23
	24	422.84	422.77	422.82	422.89	422.84	422.79	422.38 -	422.32	422.47	422.26	422.26	422.40	24
	25	422.85	422.76	422.99 +	422.87	422.82	422.78	422.86	422.40	422.38	422.45	422.25	422.40	25
	26	422.86	422.74	422.94	422.84	422.80	422.76	422.82	422.46	422.48	422.46	422.25	422.42	26
	27	422.85	422.70	422.89	422.83	422.78	422.75	422.78	422.56	422.53	422.54 +	422.24	422.48	27
	28	422.85	422.72	422.86	422.81	422.78	422.75	422.74	422.59	422.52	422.54 +	422.24	422.51	28
	29	422.84	422.70 -	422.84	422.79	422.78	422.75	422.71	422.59	422.49	422.49	422.24	422.56	29
	30	422.81		422.82	422.78	422.76	422.74 -	422.67	422.62	422.46	422.49	422.23 -	422.60 +	30
31	422.80		422.81		422.75		422.65 -	422.64 +		422.46		422.60 +	31	
Monatsmittel	422.81	422.75	422.79	422.83	422.82	422.85 +	422.76	422.48	422.43	422.42	422.31	422.30 -	m ü.M.	
Spitze Datum	422.97 20.	422.84 12.	423.01 25.	422.91 11.	423.02 7.	423.13 + 4.	422.88 9.	422.65 31.	422.65 1.	422.55 27.	422.45 - 1.	422.60 31.	m ü.M.	
Amplitude	0.32	0.15 -	0.35	0.16	0.28	0.39	0.25	0.28	0.38	0.27	0.22	0.41 +	m	

Jahr Mittel: 422.63 Spitze: 423.13 (04.06.2004) Minimum: 422.19 (12.12.2004) Amplitude: 0.93



Periode	1999 - 2004 ( 5 Jahre )												
Monatsmittel	422.65	422.66	422.72	422.75	422.76	422.79 +	422.74	422.64	422.64	422.65	422.65	422.60 -	m ü.M.
Monats-Spitze Jahr	422.97 2004	422.99 1999	423.01 2004	423.08 2001	423.11 1999	423.13 + 2004	423.00 2001	423.04 2002	423.11 2001	423.02 2003	422.99 2003	422.96 - 2001	m ü.M.
Monats-Minimum Jahr	422.34 2001	422.30 2001	422.42 2001	422.40 2002	422.44 2000	422.56 + 2000	422.39 1999	422.32 1999	422.27 2004	422.28 2004	422.23 2004	422.19 - 2004	m ü.M.
Monats-Amplitude Jahr	0.44 2001	0.35 - 2002	0.52 2001	0.42 2002	0.42 1999	0.39 2004	0.40 1999	0.55 + 1999	0.55 + 2002	0.52 1999	0.42 1999	0.41 2004	m ü.M.
Periode	Mittel: 422.69 Spitze: 423.13 (04.06.2004) Minimum: 422.19 (12.12.2004) Amplitude: 0.93												



**Grundwasserstände**

**Nr. 1164 GIBZ Berufsschule - Zug**

**KANTON ZUG**

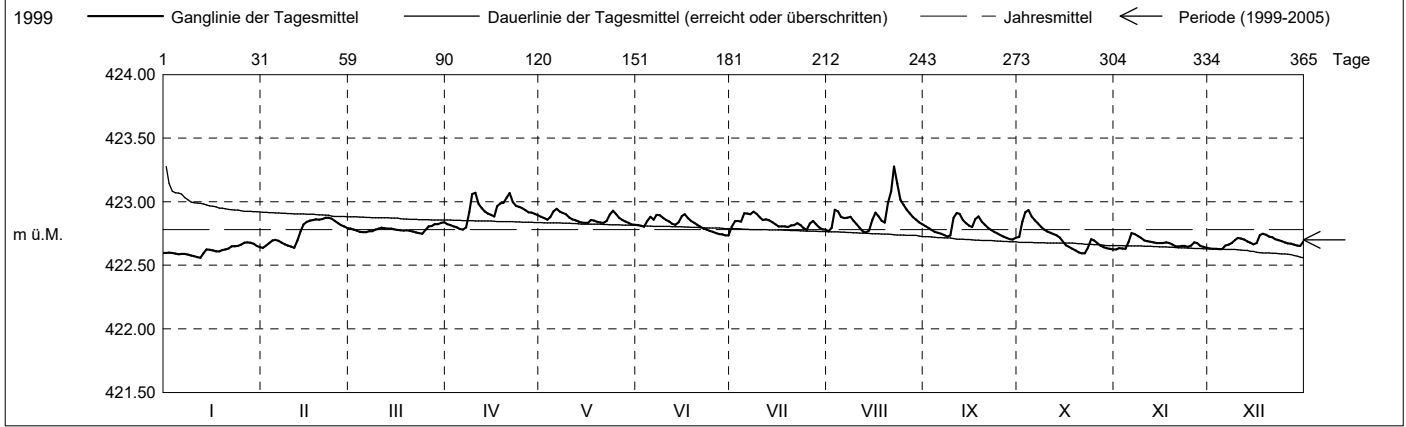
Koordinaten: 2'682'004' / 1'225'936'

Amt für Umwelt

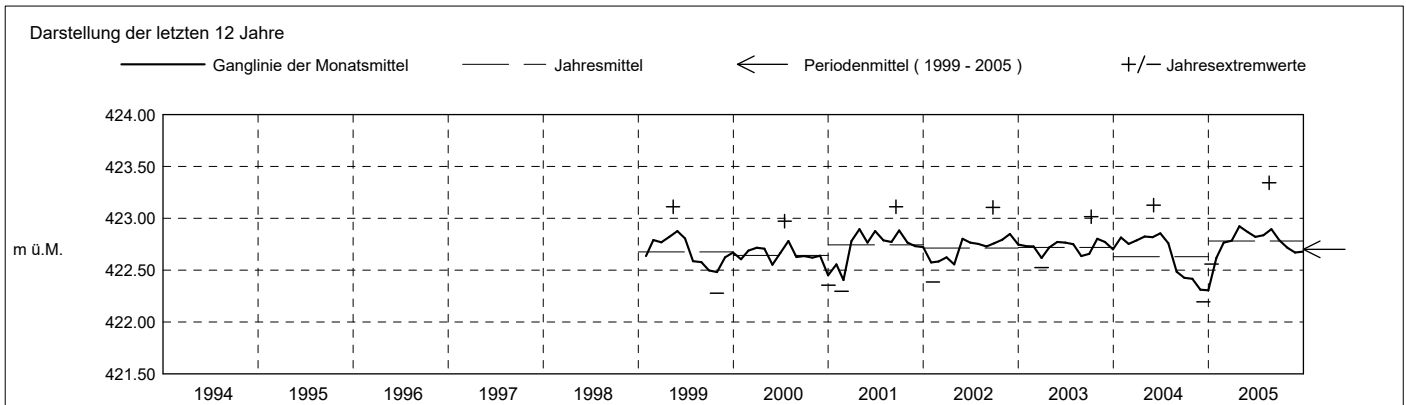
Abstichpunkt: 426.09 m ü.M. OK Terrain: 424.98 m ü.M.

2005	janvier	février	mars	avril	mai	juin	juillet	août	septembre	octobre	novembre	décembre		
Tagesmittel	1	422.60	422.64 -	422.79	422.82	422.88	422.82	422.80	422.77	422.81	422.72	422.63 -	422.63 -	1
	2	422.60	422.66	422.78	422.81	422.87	422.81	422.84	422.79	422.84	422.82	422.63 -	422.63 -	2
	3	422.60	422.67	422.77	422.80	422.86	422.80	422.85	422.94	422.78	422.82	422.63 -	422.63 -	3
	4	422.59	422.70	422.76	422.80	422.88	422.85	422.84	422.92	422.76	422.93 +	422.63 -	422.63 -	4
	5	422.59	422.70	422.76	422.79	422.92	422.88	422.91	422.88	422.76	422.88	422.68	422.63 -	5
	6	422.59	422.69	422.76	422.78 -	422.94 +	422.86	422.91	422.87	422.75	422.85	422.75 +	422.65	6
	7	422.59	422.68	422.77	422.80	422.92	422.90 +	422.90	422.87	422.74	422.83	422.74	422.66	7
	8	422.58	422.66	422.77	422.92	422.91	422.89	422.92 +	422.88	422.73	422.80	422.73	422.67	8
	9	422.58	422.65	422.78	423.06	422.90	422.87	422.90	422.85	422.73	422.78	422.71	422.70	9
	10	422.57	422.65	422.79	423.07 +	422.88	422.86	422.88	422.82	422.87	422.76	422.70	422.71	10
m ü.M.	11	422.56 -	422.64 -	422.80	422.98	422.86	422.84	422.86	422.79	422.91 +	422.75	422.69	422.71	11
	12	422.56 -	422.70	422.79	422.95	422.85	422.83	422.86	422.77	422.90	422.74	422.69	422.70	12
	13	422.60	422.77	422.79	422.92	422.84	422.82	422.85	422.76 -	422.86	422.73	422.68	422.69	13
	14	422.62	422.82	422.79	422.91	422.84	422.84	422.84	422.77	422.83	422.72	422.68	422.68	14
	15	422.62	422.84	422.78	422.90	422.83	422.89	422.82	422.86	422.81	422.68	422.67	422.67	15
	16	422.62	422.85	422.78	422.88	422.83	422.90 +	422.81	422.91	422.80	422.66	422.68	422.67	16
	17	422.61	422.86	422.78	422.96	422.86	422.87	422.81	422.88	422.86	422.64	422.68	422.74	17
	18	422.61	422.86	422.77	422.99	422.85	422.85	422.81	422.85	422.88	422.63	422.67	422.75 +	18
	19	422.62	422.86	422.77	422.99	422.84	422.83	422.80	422.84	422.84	422.62	422.66	422.74	19
	20	422.62	422.86	422.77	423.03	422.83	422.82	422.81	422.99	422.82	422.60	422.65	422.73	20
+ Maximum	21	422.63	422.87 +	422.77	423.07 +	422.83	422.80	422.82	423.08	422.80	422.59 -	422.65	422.72	21
	22	422.65	422.87 +	422.76	423.00	422.85	422.79	422.83	423.28 +	422.78	422.59 -	422.65	422.71	22
	23	422.65	422.87 +	422.75 -	422.97	422.90	422.78	422.82	423.14	422.76	422.64	422.65	422.70	23
	24	422.65	422.85	422.75 -	422.96	422.93	422.77	422.79	423.02	422.75	422.70	422.64	422.69	24
	25	422.66	422.83	422.78	422.95	422.90	422.76	422.78 -	422.97	422.74	422.69	422.65	422.68	25
	26	422.68 +	422.82	422.81	422.93	422.87	422.75	422.83	422.94	422.73	422.67	422.68	422.67	26
	27	422.68 +	422.81	422.81	422.92	422.86	422.75	422.83	422.91	422.71	422.66	422.68	422.67	27
	28	422.68 +	422.79	422.82	422.91	422.84	422.74 -	422.82	422.88	422.71	422.64	422.65	422.66	28
	29	422.67	422.82	422.82	422.90	422.83	422.74 -	422.80	422.86	422.70 -	422.64	422.64	422.65	29
	30	422.65	422.83	422.83	422.89	422.82 -	422.74 -	422.78 -	422.84	422.72	422.63	422.64	422.65	30
31	422.64	422.84 +	422.84 +	422.84 -	422.82 -	422.74 -	422.78 -	422.82	422.62	422.62	422.64	422.69	31	
Monatsmittel	422.62 -	422.77	422.78	422.92 +	422.87	422.82	422.84	422.90	422.79	422.72	422.67	422.68	m ü.M.	
Spitze Datum	422.68 - 26.	422.87 22.	422.85 30.	423.14 9.	422.95 6.	422.91 7.	422.93 8.	423.34 + 22.	422.93 11.	422.95 4.	422.75 6.	422.75 17.	m ü.M.	
Amplitude	0.13	0.24	0.10 -	0.36	0.14	0.19	0.15	0.59 +	0.23	0.35	0.13	0.12	m	

Jahr Mittel: 422.78 Spitze: 423.34 (22.08.2005) Minimum: 422.56 (12.01.2005) Amplitude: 0.78



Periode	1999 - 2005 ( 6 Jahre )												
Monatsmittel	422.65	422.67	422.73	422.78	422.78	422.79 +	422.75	422.67	422.66	422.66	422.66	422.61 -	m ü.M.
Monats-Spitze Jahr	422.97 2004	422.99 1999	423.01 2004	423.14 2005	423.11 1999	423.13 2004	423.00 2001	423.34 + 2005	423.11 2001	423.02 2003	422.99 2003	422.96 - 2001	m ü.M.
Monats-Minimum Jahr	422.34 2001	422.30 2001	422.42 2001	422.40 2002	422.44 2000	422.56 + 2000	422.39 1999	422.32 1999	422.27 2004	422.28 2004	422.23 2004	422.19 - 2004	m ü.M.
Monats-Amplitude Jahr	0.44 2001	0.35 - 2002	0.52 2001	0.42 2002	0.42 1999	0.39 2004	0.40 1999	0.59 + 2005	0.55 2002	0.52 1999	0.42 1999	0.41 2004	m ü.M.
Periode	Mittel: 422.70 Spitze: 423.34 (22.08.2005) Minimum: 422.19 (12.12.2004) Amplitude: 1.15												



**Grundwasserstände**

**Nr. 1164 GIBZ Berufsschule - Zug**

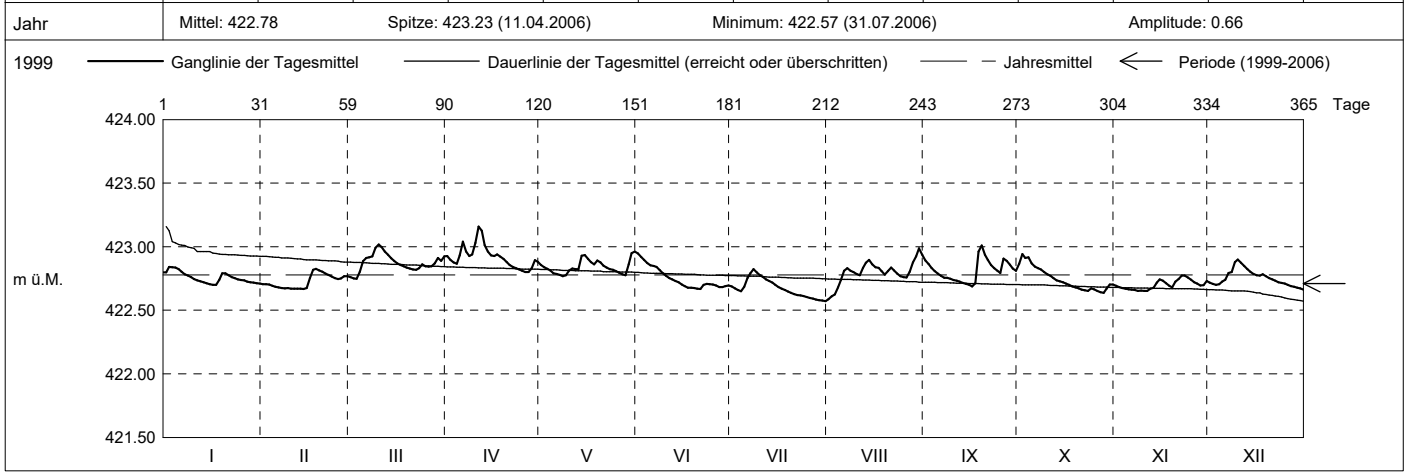
**KANTON ZUG**

Koordinaten: 2'682'004' / 1'225'936'

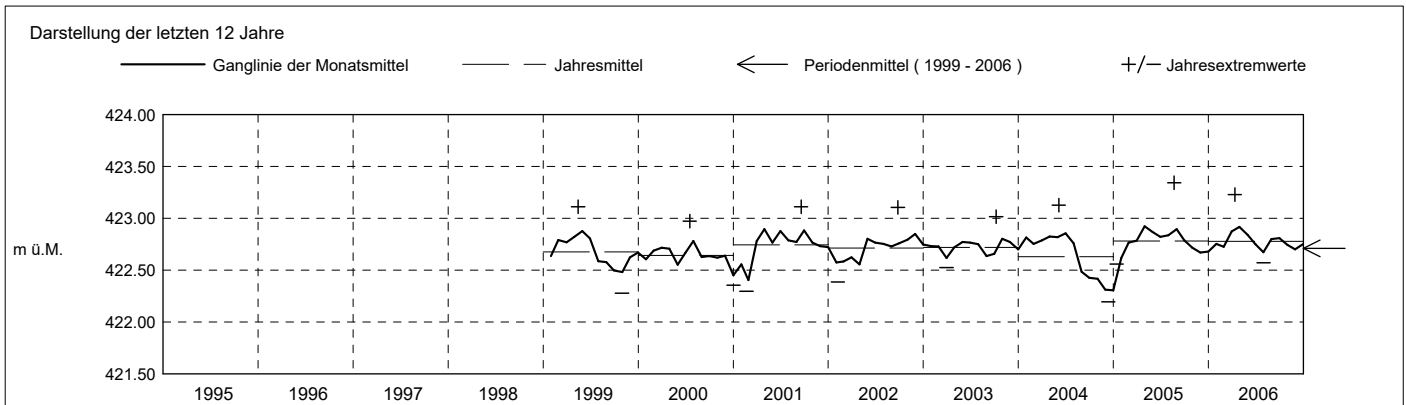
Amt für Umwelt

Abstichpunkt: 426.09 m ü.M. OK Terrain: 424.98 m ü.M.

2006	janvier	février	mars	avril	mai	juin	juillet	août	septembre	octobre	novembre	décembre	
Tagesmittel	1 422.80	422.71	422.76	422.93	422.86	422.95 +	422.69	422.59 -	422.89	422.87	422.69	422.72	1
	2 422.84 +	422.71	422.75 -	422.90	422.84	422.92	422.67	422.61	422.86	422.94 +	422.68	422.71	2
	3 422.84 +	422.70	422.75 -	422.88	422.83	422.90	422.66	422.63	422.83	422.91	422.68	422.70	3
	4 422.84 +	422.69	422.80	422.87	422.81	422.87	422.65	422.68	422.81	422.92	422.67	422.70	4
	5 422.82	422.68	422.89	422.93	422.79	422.85	422.68	422.74	422.79	422.87	422.66	422.72	5
	6 422.80	422.68	422.91	423.04	422.79	422.85	422.75	422.81	422.77	422.84	422.66	422.74	6
	7 422.78	422.67 -	422.92	422.96	422.78	422.84	422.79	422.83	422.76	422.83	422.66	422.79	7
	8 422.77	422.67 -	422.92	422.93	422.77 -	422.82	422.82 +	422.81	422.75	422.82	422.65 -	422.80	8
	9 422.76	422.67 -	422.99	422.94	422.78	422.79	422.80	422.80	422.75	422.80	422.66	422.88	9
	10 422.74	422.67 -	423.02 +	423.03	422.81	422.77	422.78	422.79	422.74	422.78	422.65 -	422.90 +	10
	11 422.74	422.67 -	423.00	423.16 +	422.83	422.75	422.76	422.77	422.73	422.77	422.65 -	422.87	11
	12 422.73	422.67 -	422.96	423.13	422.82	422.74	422.74	422.83	422.72	422.75	422.67	422.85	12
	13 422.72	422.67 -	422.94	423.01	422.82	422.73	422.73	422.81	422.71	422.73	422.68	422.82	13
m ü.M.	14 422.71	422.67 -	422.91	422.96	422.93	422.72	422.72	422.90	422.71	422.73	422.72	422.80	14
	15 422.70 -	422.67 -	422.89	422.93	422.93	422.70	422.70	422.86	422.70	422.72	422.74	422.79	15
	16 422.70 -	422.75	422.87	422.93	422.90	422.69	422.68	422.84	422.69 -	422.71	422.73	422.77	16
	17 422.70 -	422.82 +	422.86	422.94	422.88	422.68	422.67	422.83	422.71	422.70	422.71	422.77	17
	18 422.74	422.82 +	422.84	422.92	422.86	422.68	422.68	422.81	422.96	422.69	422.69	422.78	18
	19 422.79	422.81	422.84	422.90	422.89	422.67 -	422.65	422.78	423.01 +	422.68	422.68	422.77	19
	20 422.79	422.80	422.83	422.88	422.88	422.67 -	422.64	422.81	422.94	422.67	422.73	422.75	20
	21 422.78	422.79	422.82	422.86	422.85	422.67 -	422.63	422.84	422.90	422.66	422.75	422.74	21
	22 422.76	422.78	422.82	422.84	422.84	422.70	422.62	422.81	422.86	422.66	422.77 +	422.73	22
	23 422.75	422.77	422.83	422.83	422.82	422.71	422.62	422.79	422.83	422.65	422.77 +	422.72	23
	24 422.74	422.75	422.86	422.82	422.82	422.71	422.61	422.77	422.81	422.67	422.76	422.72	24
	25 422.74	422.74	422.85	422.81	422.81	422.70	422.60	422.76	422.79	422.67	422.74	422.71	25
+ Maximum	26 422.73	422.75	422.84	422.80 -	422.80	422.70	422.60	422.76	422.91	422.65	422.72	422.70	26
	27 422.73	422.77	422.85	422.80 -	422.78	422.68	422.59	422.80	422.89	422.64 -	422.71	422.69	27
- Minimum	28 422.72	422.77	422.87	422.83	422.77 -	422.68	422.58	422.88	422.86	422.64 -	422.70	422.68	28
	29 422.72	422.81	422.91	422.89	422.86	422.69	422.58	422.92	422.83	422.67	422.70	422.68	29
	30 422.71	422.89	422.89	422.88	422.95	422.69	422.58	422.99 +	422.81	422.70	422.73	422.67	30
	31 422.71	422.82	422.92	422.96 +	422.96	422.69	422.57 -	422.94	422.81	422.70	422.66 -	422.66	31
Monatsmittel	422.76	422.73	422.87	422.92 +	422.84	422.75	422.67 -	422.80	422.81	422.74	422.70	422.75	m ü.M.
Spitze Datum	422.84 2.	422.83 18.	423.02 10.	423.23 + 11.	422.96 31.	422.95 1.	422.83 8.	423.01 30.	423.07 18.	422.95 2.	422.78 - 22.	422.91 10.	m ü.M.
Amplitude	0.15	0.16	0.28	0.43	0.20	0.29	0.26	0.44 +	0.39	0.31	0.13 -	0.25	m
Jahr	Mittel: 422.78		Spitze: 423.23 (11.04.2006)				Minimum: 422.57 (31.07.2006)			Amplitude: 0.66			



Periode	1999 - 2006 ( 7 Jahre )												
Monatsmittel	422.66	422.68	422.74	422.80 +	422.79	422.79	422.74	422.69	422.68	422.67	422.66	422.63 -	m ü.M.
Monats-Spitze Jahr	422.97 2004	422.99 1999	423.02 2006	423.23 2006	423.11 1999	423.13 2004	423.00 2001	423.34 + 2005	423.11 2001	423.02 2003	422.99 2003	422.96 - 2001	m ü.M.
Monats-Minimum Jahr	422.34 2001	422.30 2001	422.42 2001	422.40 2002	422.44 2000	422.56 + 2000	422.39 1999	422.32 1999	422.27 2004	422.28 2004	422.23 2004	422.19 - 2004	m ü.M.
Monats-Amplitude Jahr	0.44 2001	0.35 - 2002	0.52 2001	0.43 2006	0.42 1999	0.39 2004	0.40 1999	0.59 + 2005	0.55 2002	0.52 1999	0.42 1999	0.41 2004	m ü.M.
Periode	Mittel: 422.71		Spitze: 423.34 (22.08.2005)				Minimum: 422.19 (12.12.2004)			Amplitude: 1.15			





**Grundwasserstände**

**Nr. 1164 GIBZ Berufsschule - Zug**

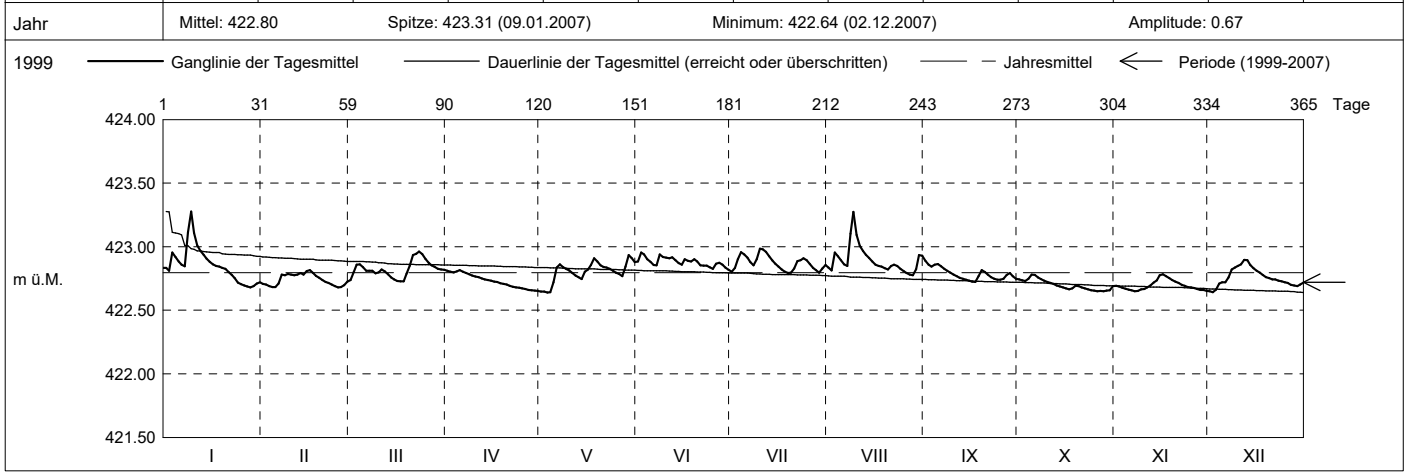
**KANTON ZUG**

Koordinaten: 2'682'004' / 1'225'936'

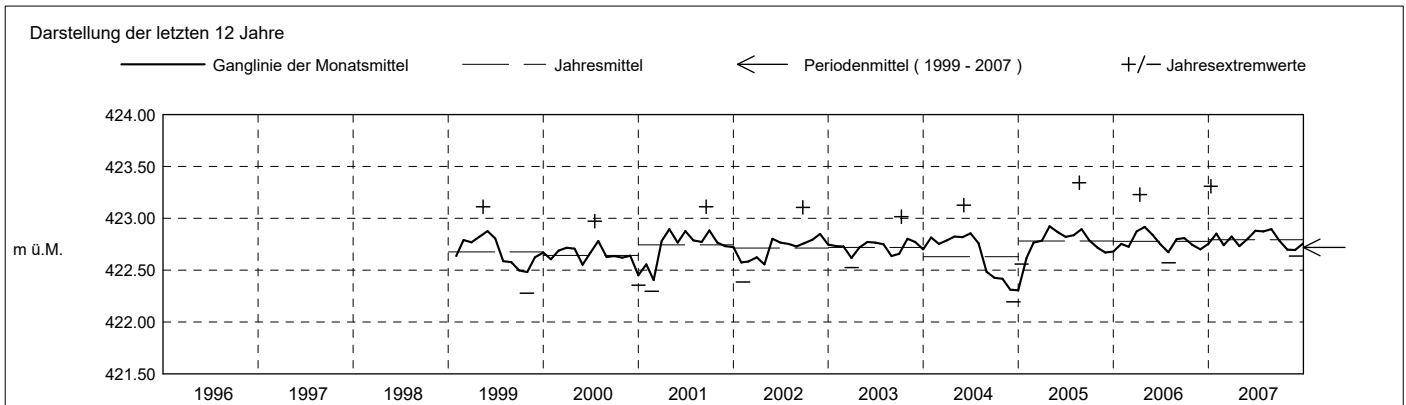
Amt für Umwelt

Abstichpunkt: 426.09 m ü.M. OK Terrain: 424.98 m ü.M.

2007	janvier	février	mars	avril	mai	juin	juillet	août	septembre	octobre	novembre	décembre																																				
Tagesmittel	1 422.83	422.71	422.74	422.81	422.65	422.88	422.80	422.84	422.89 +	422.74	422.69	422.65	1																																			
	2 422.81	422.70	422.80	422.80	422.65	422.96 +	422.83	422.81	422.86	422.74	422.69	422.64 -	2																																			
	3 422.95	422.69	422.86	422.80	422.64 -	422.94	422.90	422.95	422.84	422.73	422.68	422.66	3																																			
	4 422.92	422.68 -	422.86	422.81	422.64 -	422.90	422.96	422.92	422.86	422.75	422.67	422.71	4																																			
	5 422.88	422.68 -	422.84	422.82 +	422.72	422.88	422.94	422.89	422.86	422.78 +	422.66	422.72	5																																			
	6 422.86	422.71	422.81	422.80	422.84	422.86	422.91	422.86	422.85	422.78 +	422.66	422.72	6																																			
	7 422.85	422.78	422.81	422.79	422.86	422.85	422.88	422.85	422.83	422.76	422.65 -	422.76	7																																			
	8 423.11	422.78	422.81	422.78	422.84	422.94	422.85	423.10	422.81	422.74	422.65 -	422.82	8																																			
	9 423.28 +	422.79	422.79	422.77	422.83	422.92	422.90	423.27 +	422.80	422.73	422.66	422.84	9																																			
	10 423.11	422.78	422.80	422.77	422.81	422.91	422.98 +	423.09	422.78	422.72	422.67	422.85	10																																			
	11 423.01	422.77	422.82	422.76	422.79	422.91	422.98 +	423.01	422.77	422.72	422.68	422.86	11																																			
	12 422.97	422.78	422.80	422.75	422.77	422.92	422.96	422.97	422.76	422.71	422.70	422.90 +	12																																			
	13 422.94	422.79	422.78	422.74	422.76	422.89	422.92	422.94	422.75	422.69	422.72	422.89	13																																			
	14 422.91	422.78	422.76	422.74	422.74	422.87	422.89	422.91	422.74	422.69	422.73	422.86	14																																			
m ü.M.	15 422.88	422.81	422.74	422.73	422.80	422.86	422.87	422.88	422.73	422.68	422.78 +	422.83	15																																			
	16 422.86	422.82 +	422.73 -	422.73	422.82	422.90	422.84	422.86	422.73	422.67	422.78 +	422.81	16																																			
	17 422.85	422.79	422.73 -	422.72	422.86	422.89	422.82	422.85	422.72 -	422.66	422.72	422.80	17																																			
	18 422.84	422.77	422.73 -	422.71	422.91	422.88	422.80	422.84	422.77	422.67	422.75	422.78	18																																			
	19 422.83	422.76	422.79	422.71	422.88	422.90	422.79 -	422.83	422.82	422.69	422.74	422.76	19																																			
	20 422.83	422.74	422.85	422.70	422.85	422.88	422.79 -	422.82	422.80	422.69	422.73	422.75	20																																			
	21 422.80	422.72	422.93	422.69	422.84	422.85	422.83	422.85	422.78	422.68	422.72	422.74	21																																			
	22 422.78	422.71	422.94	422.69	422.84	422.85	422.89	422.86	422.76	422.68	422.70	422.74	22																																			
	23 422.75	422.70	422.96 +	422.68	422.83	422.85	422.89	422.85	422.75	422.67	422.69	422.73	23																																			
	24 422.72	422.69	422.94	422.68	422.81	422.84	422.91	422.83	422.74	422.66	422.68	422.73	24																																			
+ Maximum	25 422.70	422.68 -	422.90	422.67	422.80	422.83	422.89	422.81	422.74	422.65 -	422.68	422.72	25																																			
	26 422.70	422.68 -	422.87	422.67	422.78	422.87	422.86	422.79	422.75	422.65 -	422.67	422.72	26																																			
	27 422.69	422.70	422.85	422.66	422.77	422.87	422.83	422.78	422.65 -	422.67	422.70	422.70	27																																			
- Minimum	28 422.68 -	422.73	422.84	422.66	422.84	422.86	422.81	422.77 -	422.79	422.65 -	422.66	422.69	28																																			
	29 422.69		422.83	422.65 -	422.93 +	422.84	422.80	422.82	422.65 -	422.66	422.69	422.69	29																																			
	30 422.71		422.82	422.65 -	422.91	422.82 -	422.83	422.93	422.75	422.66	422.65 -	422.70	30																																			
	31 422.72		422.82		422.88		422.86	422.93	422.75	422.69	422.65 -	422.72	31																																			
Monatsmittel	422.85	422.74	422.82	422.73	422.80	422.88	422.87	422.89 +	422.79	422.70	422.69 -	422.76	m ü.M.																																			
Spitze Datum	423.31 + 9.	422.82 16.	422.99 23.	422.82 4.	422.94 29.	422.96 8.	422.99 4.	423.31 + 9.	422.90 1.	422.78 - 5.	422.78 - 16.	422.91 12.	m ü.M.																																			
Amplitude	0.63 +	0.14	0.26	0.17	0.30	0.15	0.20	0.54	0.18	0.13 -	0.14	0.27	m																																			
Jahr	Mittel: 422.80												Spitze: 423.31 (09.01.2007)												Minimum: 422.64 (02.12.2007)												Amplitude: 0.67											



Periode	1999 - 2007 ( 8 Jahre )																																															
Monatsmittel	422.68	422.69	422.75	422.79	422.79	422.80 +	422.76	422.71	422.69	422.67	422.67	422.64 -	m ü.M.																																			
Monats-Spitze Jahr	423.31 2007	422.99 1999	423.02 2006	423.23 2006	423.11 1999	423.13 2004	423.00 2001	423.34 + 2005	423.11 2001	423.02 2003	422.99 2003	422.96 - 2001	m ü.M.																																			
Monats-Minimum Jahr	422.34 2001	422.30 2001	422.42 2001	422.40 2002	422.44 2000	422.56 + 2000	422.39 1999	422.32 1999	422.27 2004	422.28 2004	422.23 2004	422.19 - 2004	m ü.M.																																			
Monats-Amplitude Jahr	0.63 + 2007	0.35 - 2002	0.52 2001	0.43 2006	0.42 1999	0.39 2004	0.40 1999	0.59 2005	0.55 2002	0.52 1999	0.42 1999	0.41 2004	m ü.M.																																			
Periode	Mittel: 422.72												Spitze: 423.34 (22.08.2005)												Minimum: 422.19 (12.12.2004)												Amplitude: 1.15											



**Grundwasserstände**

**Nr. 1164 GIBZ Berufsschule - Zug**

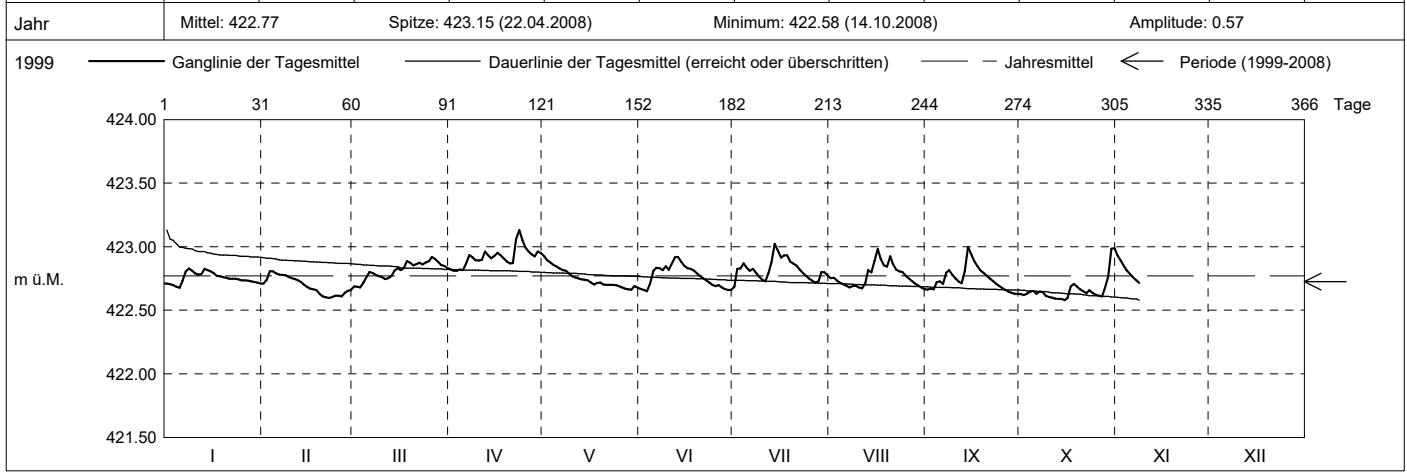
**KANTON ZUG**

Koordinaten: 2'682'004' / 1'225'936'

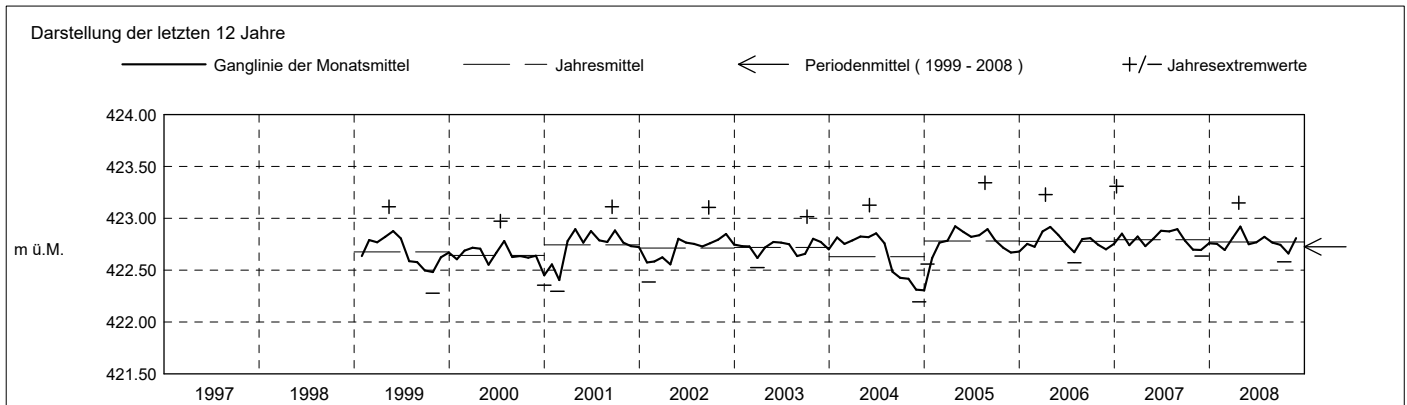
Amt für Umwelt

Abstichpunkt: 426.09 m ü.M. OK Terrain: 424.98 m ü.M.

2008	janvier	février	mars	avril	mai	juin	juillet	août	septembre	octobre	novembre	décembre																																				
Tagesmittel	1 422.71	422.71	422.69	422.82	422.92 +	422.67	422.68 -	422.75	422.66	422.63	422.93 +		1																																			
	2 422.70	422.74	422.69	422.81 -	422.89	422.66	422.83	422.76	422.67	422.62	422.89		2																																			
	3 422.70	422.81 +	422.68 -	422.81 -	422.88	422.65 -	422.83	422.73	422.67	422.63	422.85		3																																			
	4 422.68 -	422.81 +	422.72	422.82	422.86	422.71	422.87	422.71	422.72	422.65	422.81		4																																			
	5 422.68 -	422.79	422.76	422.82	422.84	422.81	422.83	422.70	422.73	422.65	422.79		5																																			
	6 422.73	422.78	422.80	422.87	422.83	422.83	422.81	422.69	422.71	422.63	422.76		6																																			
	7 422.81	422.78	422.79	422.93	422.81	422.83	422.83	422.68	422.80	422.65	422.74		7																																			
	8 422.83 +	422.77	422.78	422.92	422.81	422.81	422.79	422.69	422.81	422.64	422.71 -		8																																			
	9 422.81	422.76	422.77	422.90	422.79	422.85	422.76	422.69	422.78	422.61			9																																			
	10 422.79	422.75	422.76	422.89	422.77	422.82	422.74	422.68	422.75	422.60			10																																			
	11 422.78	422.74	422.75	422.90	422.76	422.87	422.73	422.67 -	422.73	422.60			11																																			
	12 422.79	422.74	422.75	422.96	422.75	422.92 +	422.79	422.71	422.71	422.59			12																																			
	13 422.82	422.72	422.77	422.93	422.74	422.92 +	422.88	422.82	422.81	422.59			13																																			
	14 422.82	422.70	422.81	422.91	422.74	422.88	423.02 +	422.80	423.00 +	422.59			14																																			
m ü.M.	15 422.81	422.68	422.83	422.93	422.74	422.85	422.97	422.89	422.94	422.58 -			15																																			
	16 422.79	422.67	422.82	422.95	422.72	422.83	422.91	422.98 +	422.89	422.60			16																																			
	17 422.77	422.66	422.83	422.93	422.70	422.83	422.93	422.91	422.85	422.69			17																																			
	18 422.77	422.66	422.89	422.91	422.71	422.81	422.93	422.85	422.81	422.71			18																																			
	19 422.76	422.63	422.87	422.88	422.72	422.79	422.88	422.84	422.79	422.69			19																																			
	20 422.75	422.61	422.85	422.87	422.70	422.77	422.87	422.92	422.77	422.67			20																																			
	21 422.75	422.60 -	422.86	422.87	422.70	422.75	422.85	422.86	422.75	422.65			21																																			
	22 422.75	422.60 -	422.87	423.06	422.70	422.73	422.82	422.82	422.73	422.64			22																																			
	23 422.75	422.60 -	422.86	423.13 +	422.70	422.72	422.79	422.80	422.71	422.66			23																																			
	24 422.74	422.62	422.88	423.05	422.70	422.70	422.77	422.80	422.69	422.64			24																																			
	25 422.74	422.61	422.89	422.99	422.69	422.69	422.75	422.77	422.67	422.62			25																																			
+ Maximum	26 422.74	422.61	422.92 +	422.96	422.68	422.70	422.73	422.75	422.66	422.61			26																																			
	27 422.73	422.90	422.92	422.94	422.67	422.68	422.72	422.73	422.65	422.61			27																																			
- Minimum	28 422.73	422.65	422.88	422.92	422.66 -	422.67	422.73	422.71	422.64	422.68			28																																			
	29 422.72	422.66	422.86	422.96	422.66 -	422.66	422.80	422.69	422.63 -	422.77			29																																			
	30 422.72		422.85	422.95	422.69	422.66	422.80	422.68	422.63 -	422.98			30																																			
	31 422.71		422.83		422.68		422.77	422.67 -	422.99 +				31																																			
Monatsmittel	422.75	422.69	422.81	422.92 +	422.75	422.77	422.82	422.77	422.74	422.66 -	422.81		m ü.M.																																			
Spitze Datum	422.83 8.	422.81 - 3.	422.92 26.	423.15 + 22.	422.94 1.	422.93 12.	423.07 14.	423.02 16.	423.02 14.	423.07 30.	422.96 1.		m ü.M.																																			
Amplitude	0.16 -	0.22	0.25	0.34	0.28	0.28	0.42	0.36	0.39	0.49 +	0.25		m																																			
Jahr	Mittel: 422.77												Spitze: 423.15 (22.04.2008)												Minimum: 422.58 (14.10.2008)												Amplitude: 0.57											



Periode	1999 - 2008 (9 Jahre)																																															
Monatsmittel	422.69	422.69	422.76	422.80 +	422.78	422.80 +	422.76	422.72	422.70	422.67	422.68	422.64 -	m ü.M.																																			
Monats-Spitze Jahr	423.31 2007	422.99 1999	423.02 2006	423.23 2006	423.11 1999	423.13 2004	423.07 2008	423.34 + 2005	423.11 2001	423.07 2008	422.99 2003	422.96 - 2001	m ü.M.																																			
Monats-Minimum Jahr	422.34 2001	422.30 2001	422.42 2001	422.40 2002	422.44 2000	422.56 + 2000	422.39 1999	422.32 1999	422.27 2004	422.28 2004	422.23 2004	422.19 - 2004	m ü.M.																																			
Monats-Amplitude Jahr	0.63 + 2007	0.35 - 2002	0.52 2001	0.43 2006	0.42 1999	0.39 2004	0.42 2008	0.59 2005	0.55 2002	0.52 1999	0.42 1999	0.41 2004	m ü.M.																																			
Periode	Mittel: 422.72												Spitze: 423.34 (22.08.2005)												Minimum: 422.19 (12.12.2004)												Amplitude: 1.15											



**Grundwasserstände**

**Nr. 1164 GIBZ Berufsschule - Zug**

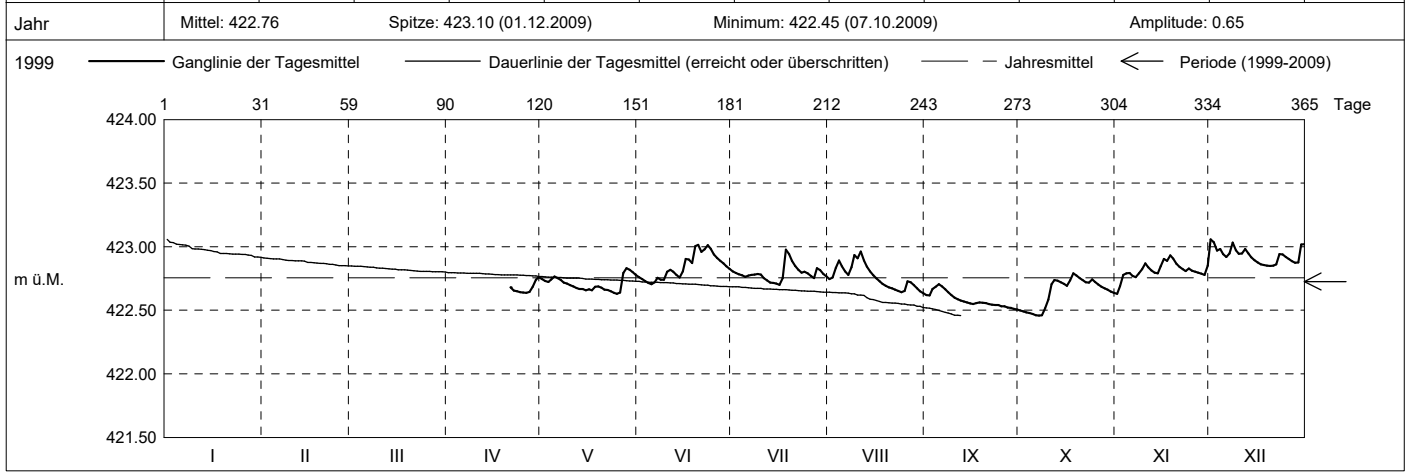
**KANTON ZUG**

Koordinaten: 2'682'004' / 1'225'936'

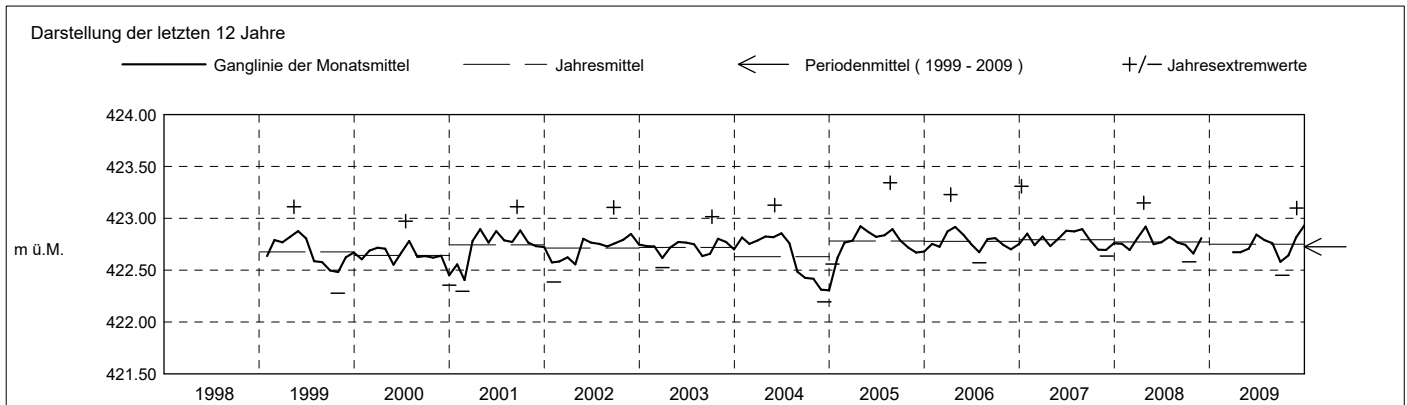
Amt für Umwelt

Abstichpunkt: 426.09 m ü.M. OK Terrain: 424.98 m ü.M.

2009		janvier	février	mars	avril	mai	juin	juillet	août	septembre	octobre	novembre	décembre	
Tagesmittel	1					422.74	422.76	422.81	422.74	422.62	422.50	422.63 -	423.06 +	1
	2					422.73	422.74	422.79	422.76	422.62	422.49	422.69	423.04	2
	3					422.72	422.73	422.78	422.83	422.67	422.48	422.78	422.97	3
	4					422.74	422.72	422.77	422.89	422.68	422.48	422.79	422.98	4
	5					422.77	422.70 -	422.76	422.85	422.71 +	422.47	422.79	422.94	5
	6					422.75	422.72	422.77	422.81	422.69	422.46 -	422.77	422.92	6
	7					422.74	422.76	422.78	422.78	422.66	422.46 -	422.76	422.95	7
	8					422.72	422.74	422.78	422.84	422.64	422.46 -	422.79	423.03	8
	9					422.71	422.74	422.79	422.93	422.62	422.51	422.82	422.97	9
	10					422.70	422.80	422.78	422.91	422.60	422.58	422.87	422.94	10
m ü.M.	11					422.89	422.82	422.75	422.96 +	422.59	422.71	422.84	422.95	11
	12					422.87	422.80	422.73	422.89	422.58	422.74	422.81	422.98	12
	13					422.87	422.78	422.72	422.84	422.57	422.73	422.80	422.95	13
	14					422.87	422.76	422.71	422.81	422.56	422.72	422.79	422.92	14
	15					422.86	422.80	422.71	422.77	422.55	422.71	422.85	422.89	15
	16					422.86	422.90	422.70 -	422.75	422.55	422.69	422.90	422.88	16
	17					422.86	422.90	422.75	422.73	422.56	422.74	422.89	422.86	17
	18					422.88	422.87	422.98 +	422.71	422.56	422.79 +	422.93 +	422.86	18
	19					422.89	423.01	422.94	422.69	422.56	422.77	422.90	422.85 -	19
	20					422.88	423.02 +	422.89	422.68	422.56	422.75	422.87	422.85 -	20
+ Maximum	21				422.68	422.66	422.96	422.85	422.67	422.55	422.74	422.84	422.85 -	21
	22				422.65	422.66	422.98	422.82	422.66	422.54	422.72	422.82	422.86	22
	23				422.65	422.65	423.01	422.80	422.65	422.54	422.72	422.81	422.94	23
	24				422.64 -	422.64	422.98	422.80	422.64	422.54	422.74	422.83	422.94	24
	25				422.64 -	422.63 -	422.94	422.79	422.65	422.53	422.72	422.81	422.92	25
	26				422.64 -	422.64	422.91	422.77	422.73	422.53	422.70	422.80	422.90	26
	27				422.64 -	422.79	422.89	422.75	422.72	422.52	422.69	422.80	422.89	27
	28				422.68	422.83 +	422.87	422.83	422.70	422.52	422.67	422.79	422.87	28
	29				422.74	422.82	422.85	422.82	422.67	422.51 -	422.66	422.78	422.88	29
	30				422.76 +	422.80	422.83	422.79	422.65	422.51 -	422.65	422.85	423.02	30
31				422.78	422.78	422.83	422.76	422.63 -	422.64	422.64	422.85	423.02	31	
Monatsmittel				422.67	422.71	422.84	422.79	422.76	422.58 -	422.64	422.81	422.93 +	m ü.M.	
Spitze Datum				422.76 29.	422.83 28.	423.06 19.	422.99 18.	423.00 10.	422.71 - 5.	422.79 17.	422.96 30.	423.10 + 1.	m ü.M.	
Amplitude				0.13 -	0.21	0.36	0.30	0.37 +	0.21	0.34	0.33	0.26	m	
Jahr	Mittel: 422.76      Spitze: 423.10 (01.12.2009)      Minimum: 422.45 (07.10.2009)      Amplitude: 0.65													



Periode	1999 - 2009 (10 Jahre)												
Monatsmittel	422.69	422.69	422.76	422.79	422.78	422.80 +	422.76	422.72	422.69	422.67 -	422.69	422.67 -	m ü.M.
Monats-Spitze Jahr	423.31 2007	422.99 - 1999	423.02 2006	423.23 2006	423.11 1999	423.13 2004	423.07 2008	423.34 + 2005	423.11 2001	423.07 2008	422.99 - 2003	423.10 2009	m ü.M.
Monats-Minimum Jahr	422.34 2001	422.30 2001	422.42 2001	422.40 2002	422.44 2000	422.56 + 2000	422.39 1999	422.32 1999	422.27 2004	422.28 2004	422.23 2004	422.19 - 2004	m ü.M.
Monats-Amplitude Jahr	0.63 + 2007	0.35 - 2002	0.52 2001	0.43 2006	0.42 1999	0.39 2004	0.42 2008	0.59 2005	0.55 2002	0.52 1999	0.42 1999	0.41 2004	m ü.M.
Periode	Mittel: 422.73      Spitze: 423.34 (22.08.2005)      Minimum: 422.19 (12.12.2004)      Amplitude: 1.15												



**Grundwasserstände**

**Nr. 1164 GIBZ Berufsschule - Zug**

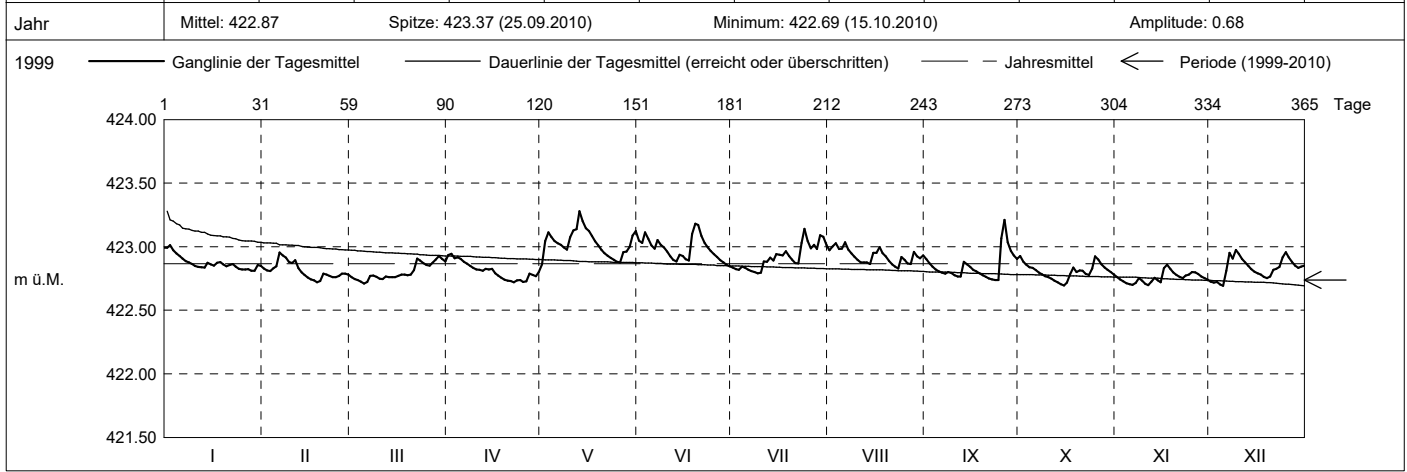
**KANTON ZUG**

Koordinaten: 2'682'004' / 1'225'936'

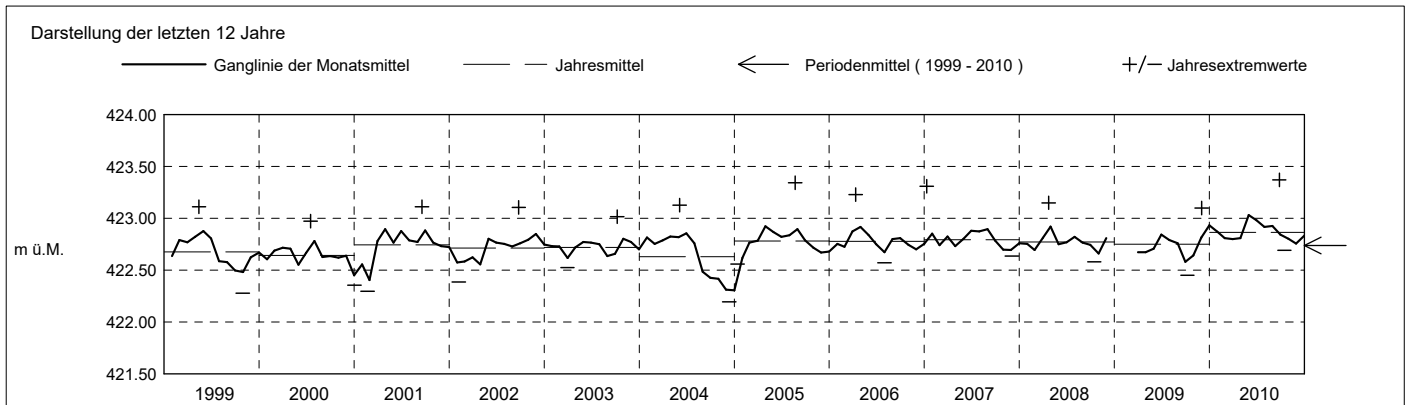
Amt für Umwelt

Abstichpunkt: 426.09 m ü.M. OK Terrain: 424.98 m ü.M.

2010	janvier	février	mars	avril	mai	juin	juillet	août	septembre	octobre	novembre	décembre																																				
Tagesmittel	1 422.99	422.83	422.76	422.93	422.86 -	423.05	422.83	422.97	422.90	422.93 +	422.76	422.73	1																																			
	2 423.01 +	422.81	422.75	422.95 +	423.05	423.03	422.82	423.00	422.87	422.88	422.74	422.72	2																																			
	3 422.97	422.81	422.74	422.91	423.11	423.11	422.82	423.03	422.84	422.86	422.73	422.72	3																																			
	4 422.95	422.83	422.73	422.92	423.08	423.06	422.84	422.98	422.82	422.84	422.71	422.70	4																																			
	5 422.93	422.85	422.71 -	422.90	423.04	423.01	422.83	422.98	422.81	422.83	422.71	422.69 -	5																																			
	6 422.91	422.95 +	422.72	422.88	423.03	422.98	422.82	423.04 +	422.80	422.82	422.70 -	422.81	6																																			
	7 422.89	422.93	422.77	422.87	423.02	423.05	422.81	422.98	422.79	422.80	422.71	422.95	7																																			
	8 422.88	422.92	422.77	422.85	422.99	423.01	422.80	422.95	422.80	422.78	422.75	422.91	8																																			
	9 422.86	422.88	422.76	422.83	422.98	422.99	422.79 -	422.92	422.79	422.77	422.73	422.98 +	9																																			
	10 422.85	422.87	422.75	422.82	423.08	422.96	422.80	422.90	422.78	422.76	422.71	422.94	10																																			
	11 422.84	422.89	422.74	422.82	423.13	422.92	422.88	422.88	422.77	422.75	422.70 -	422.90	11																																			
	12 422.84	422.83	422.77	422.81	423.14	422.90	422.88	422.88	422.77	422.73	422.72	422.88	12																																			
	13 422.84	422.80	422.76	422.83	423.28 +	422.89	422.91	422.88	422.88	422.72	422.76	422.85	13																																			
m ü.M.	14 422.87	422.78	422.76	422.82	423.20	422.94	422.89	422.86	422.86	422.71	422.74	422.82	14																																			
	15 422.86	422.76	422.76	422.82	423.15	422.93	422.94	422.95	422.84	422.70 -	422.72	422.80	15																																			
	16 422.85	422.74	422.77	422.79	423.12	422.90	422.94	422.95	422.82	422.72	422.83	422.79	16																																			
	17 422.87	422.73	422.78	422.77	423.08	422.89	422.93	423.00	422.81	422.78	422.86 +	422.78	17																																			
	18 422.88	422.72 -	422.78	422.76	423.04	423.10	422.96	422.95	422.79	422.84	422.83	422.76	18																																			
	19 422.86	422.73	422.77	422.74	423.01	423.18 +	422.93	422.92	422.77	422.80	422.80	422.75	19																																			
	20 422.85	422.79	422.78	422.73	422.97	423.17	422.90	422.89	422.76	422.81	422.78	422.77	20																																			
	21 422.86	422.78	422.82	422.73	422.95	423.09	422.87	422.86	422.75	422.81	422.76	422.82	21																																			
	22 422.86	422.77	422.91	422.72 -	422.93	423.03	422.87	422.84	422.74 -	422.79	422.75	422.83	22																																			
	23 422.84	422.76	422.89	422.73	422.91	422.99	423.03	422.83 -	422.74 -	422.78	422.77	422.84	23																																			
	24 422.83	422.76	422.87	422.74	422.90	422.97	423.14 +	422.92	422.74 -	422.83	422.78	422.92	24																																			
	25 422.82	422.77	422.86	422.72 -	422.88	422.94	423.04	422.90	423.07	422.92	422.80	422.96	25																																			
+ Maximum	26 422.82	422.79	422.85	422.73	422.88	422.92	422.99	422.87	423.21 +	422.90	422.80	422.92	26																																			
	27 422.82	422.79	422.87	422.79	422.96	422.90	422.92	422.86	423.03	422.86	422.79	422.88	27																																			
- Minimum	28 422.81 -	422.78	422.90	422.78	422.96	422.88	422.98	422.96	422.97	422.84	422.77	422.85	28																																			
	29 422.81 -		422.93 +	422.77	423.00	422.86	422.98	422.92	422.93	422.82	422.75	422.83	29																																			
	30 422.86		422.90	422.80	423.09	422.85 -	423.08	422.91	422.90	422.80	422.74	422.84	30																																			
	31 422.85		422.88		423.12		423.01	422.93		422.78		422.85	31																																			
Monatsmittel	422.87	422.81	422.80	422.81	423.03 +	422.98	422.92	422.93	422.84	422.80	422.76 -	422.83	m ü.M.																																			
Spitze Datum	423.04 2.	422.96 6.	422.93 29.	422.97 1.	423.33 13.	423.24 19.	423.17 24.	423.06 6.	423.37 + 25.	422.95 1.	422.87 - 16.	423.00 9.	m ü.M.																																			
Amplitude	0.24	0.24	0.22	0.26	0.49	0.40	0.39	0.24	0.64 +	0.26	0.18 -	0.31	m																																			
Jahr	Mittel: 422.87												Spitze: 423.37 (25.09.2010)												Minimum: 422.69 (15.10.2010)												Amplitude: 0.68											



Periode	1999 - 2010 ( 11 Jahre )																																															
Monatsmittel	422.71	422.70	422.76	422.79	422.80	422.82 +	422.78	422.74	422.70	422.68 -	422.70	422.69	m ü.M.																																			
Monats-Spitze Jahr	423.31 2007	422.99 - 1999	423.02 2006	423.23 2006	423.33 2010	423.24 2010	423.17 2010	423.34 2005	423.37 + 2010	423.07 2008	422.99 - 2003	423.10 2009	m ü.M.																																			
Monats-Minimum Jahr	422.34 2001	422.30 2001	422.42 2001	422.40 2002	422.44 2000	422.56 + 2000	422.39 1999	422.32 1999	422.27 2004	422.28 2004	422.23 2004	422.19 - 2004	m ü.M.																																			
Monats-Amplitude Jahr	0.63 2007	0.35 - 2002	0.52 2001	0.43 2006	0.49 2010	0.40 2010	0.42 2008	0.59 2005	0.64 + 2010	0.52 1999	0.42 1999	0.41 2004	m ü.M.																																			
Periode	Mittel: 422.74												Spitze: 423.37 (25.09.2010)												Minimum: 422.19 (12.12.2004)												Amplitude: 1.18											



**Grundwasserstände**

**Nr. 1164 GIBZ Berufsschule - Zug**

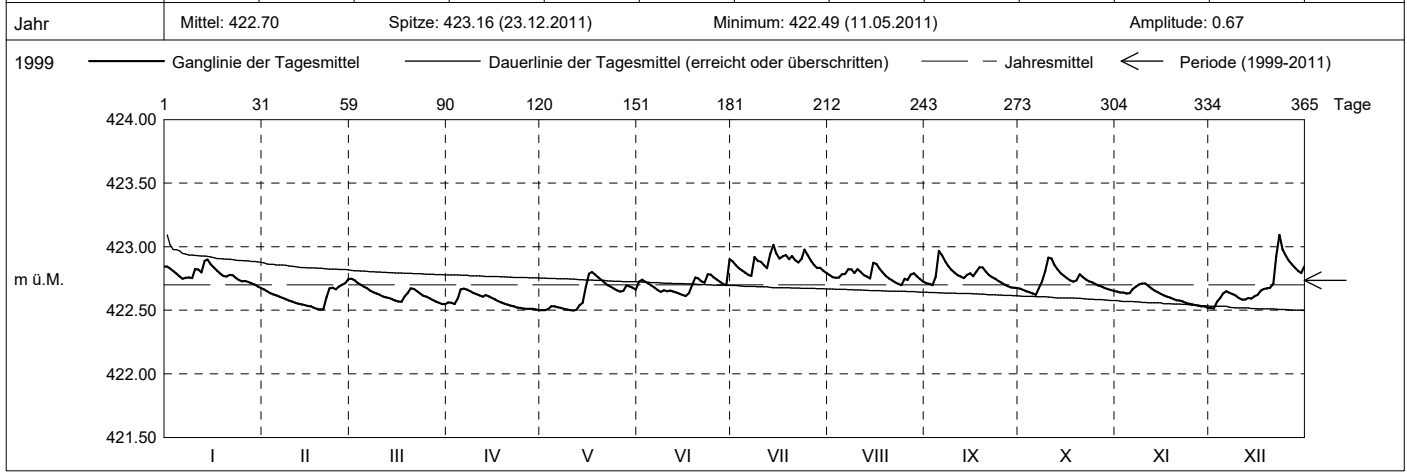
**KANTON ZUG**

Koordinaten: 2'682'004' / 1'225'936'

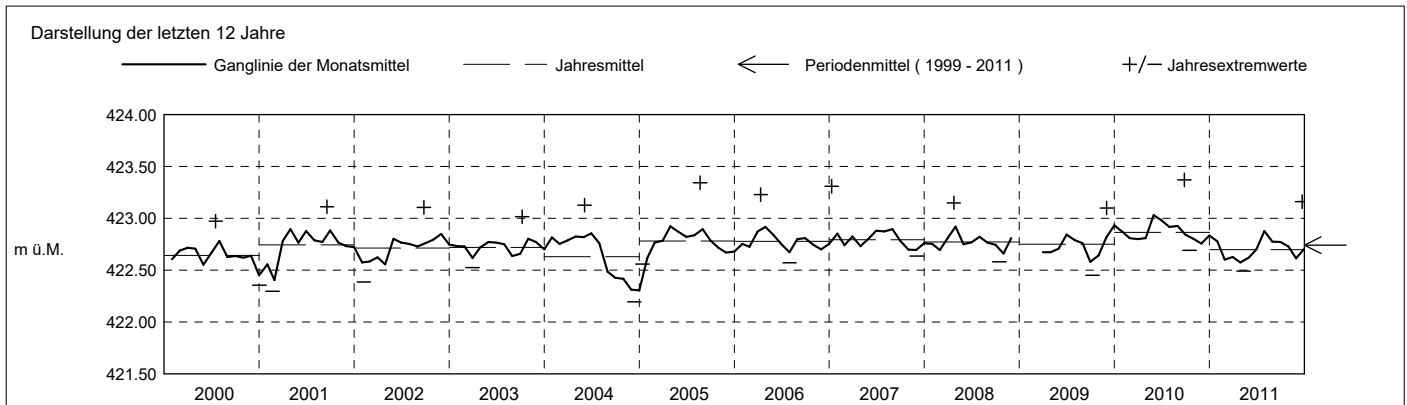
Amt für Umwelt

Abstichpunkt: 426.09 m ü.M. OK Terrain: 424.98 m ü.M.

2011	janvier	février	mars	avril	mai	juin	juillet	août	septembre	octobre	novembre	décembre																																				
Tagesmittel	1 422.84	422.66	422.75 +	422.56	422.50 -	422.73	422.89	422.78	422.71	422.67	422.65	422.52	1																																			
	2 422.83	422.65	422.73	422.56	422.50 -	422.74	422.85	422.76	422.71	422.66	422.64	422.51 -	2																																			
	3 422.81	422.64	422.71	422.55	422.51	422.73	422.83	422.76	422.70	422.65	422.64	422.57	3																																			
	4 422.79	422.62	422.70	422.59	422.53	422.71	422.81	422.76	422.76	422.64	422.63	422.60	4																																			
	5 422.82	422.62	422.68	422.67 +	422.53	422.69	422.80	422.78	422.97 +	422.63	422.64	422.63	5																																			
	6 422.75	422.61	422.67	422.67 +	422.52	422.68	422.78	422.79	422.93	422.62 -	422.66	422.65	6																																			
	7 422.76	422.60	422.65	422.66	422.52	422.66	422.77 -	422.82	422.88	422.68	422.68	422.64	7																																			
	8 422.76	422.59	422.64	422.65	422.51	422.64	422.92	422.82	422.85	422.73	422.70	422.63	8																																			
	9 422.75	422.58	422.63	422.64	422.51	422.66	422.89	422.79	422.82	422.81	422.71 +	422.61	9																																			
	10 422.82	422.57	422.62	422.63	422.50 -	422.65	422.88	422.82	422.80	422.91 +	422.71 +	422.60	10																																			
	11 422.82	422.56	422.61	422.62	422.50 -	422.65	422.86	422.80	422.78	422.90	422.69	422.58	11																																			
	12 422.80	422.55	422.60	422.61	422.50 -	422.65	422.83	422.78	422.77	422.86	422.67	422.58	12																																			
	13 422.89	422.55	422.60	422.62	422.54	422.64	422.94	422.77	422.75	422.82	422.65	422.60	13																																			
m ü.M.	14 422.90 +	422.54	422.59	422.61	422.56	422.63	423.02 +	422.75	422.78	422.79	422.64	422.59	14																																			
	15 422.86	422.53	422.58	422.60	422.68	422.62	422.95	422.87 +	422.79	422.77	422.63	422.61	15																																			
	16 422.84	422.53	422.57	422.58	422.79	422.61 -	422.91	422.86	422.77	422.75	422.62	422.62	16																																			
	17 422.81	422.52	422.57	422.57	422.80 +	422.63	422.93	422.83	422.80	422.74	422.61	422.65	17																																			
	18 422.79	422.51 -	422.61	422.56	422.78	422.70	422.93	422.80	422.84	422.72	422.60	422.67	18																																			
	19 422.77	422.51 -	422.64	422.55	422.76	422.76	422.90	422.77	422.84	422.74	422.59	422.67	19																																			
	20 422.77	422.51 -	422.67	422.54	422.74	422.75	422.93	422.75	422.80	422.78	422.58	422.68	20																																			
	21 422.78	422.60	422.67	422.54	422.72	422.73	422.89	422.73	422.78	422.76	422.58	422.71	21																																			
	22 422.77	422.67	422.65	422.53	422.70	422.72	422.88	422.72	422.76	422.74	422.57	422.93	22																																			
	23 422.76	422.68	422.63	422.52	422.68	422.78	422.90	422.71	422.75	422.73	422.56	423.09 +	23																																			
	24 422.74	422.66	422.61	422.52	422.67	422.78	422.98	422.70 -	422.73	422.72	422.55	422.98	24																																			
+ Maximum	25 422.73	422.69	422.61	422.51	422.66	422.76	422.93	422.75	422.72	422.71	422.55	422.93	25																																			
	26 422.73	422.70	422.59	422.51	422.65	422.74	422.89	422.74	422.70	422.70	422.54	422.89	26																																			
	27 422.72	422.71	422.58	422.51	422.65	422.72	422.85	422.78	422.69	422.69	422.54	422.86	27																																			
- Minimum	28 422.71	422.74 +	422.57	422.51	422.70	422.71	422.83	422.79	422.68 -	422.67	422.53	422.83	28																																			
	29 422.70		422.56	422.51	422.69	422.70	422.83	422.77	422.68 -	422.67	422.53	422.81	29																																			
	30 422.69		422.55 -	422.50 -	422.68	422.90 +	422.81	422.74	422.68 -	422.66	422.52 -	422.79	30																																			
	31 422.67 -		422.55 -		422.66		422.79	422.73		422.65		422.85	31																																			
Monatsmittel	422.78	422.60	422.63	422.57 -	422.62	422.70	422.88 +	422.77	422.77	422.73	422.61	422.71	m ü.M.																																			
Spitze Datum	422.92 13.	422.75 28.	422.75 1.	422.67 - 5.	422.81 17.	422.92 30.	423.06 14.	422.89 15.	423.00 5.	422.96 10.	422.72 9.	423.16 + 23.	m ü.M.																																			
Amplitude	0.25	0.25	0.21	0.17 -	0.32	0.31	0.30	0.20	0.33	0.34	0.20	0.65 +	m																																			
Jahr	Mittel: 422.70												Spitze: 423.16 (23.12.2011)												Minimum: 422.49 (11.05.2011)												Amplitude: 0.67											



Periode	1999 - 2011 (12 Jahre)																																															
Monatsmittel	422.71	422.69	422.75	422.77	422.79	422.81 +	422.78	422.74	422.71	422.68 -	422.69	422.69	m ü.M.																																			
Monats-Spitze Jahr	423.31 2007	422.99 - 1999	423.02 2006	423.23 2006	423.33 2010	423.24 2010	423.17 2010	423.34 2005	423.37 + 2010	423.07 2008	422.99 - 2003	423.16 2011	m ü.M.																																			
Monats-Minimum Jahr	422.34 2001	422.30 2001	422.42 2001	422.40 2002	422.44 2000	422.56 + 2000	422.39 1999	422.32 1999	422.27 2004	422.28 2004	422.23 2004	422.19 - 2004	m ü.M.																																			
Monats-Amplitude Jahr	0.63 2007	0.35 - 2002	0.52 2001	0.43 2006	0.49 2010	0.40 2010	0.42 2008	0.59 2005	0.64 2010	0.52 1999	0.42 1999	0.65 + 2011	m ü.M.																																			
Periode	Mittel: 422.74												Spitze: 423.37 (25.09.2010)												Minimum: 422.19 (12.12.2004)												Amplitude: 1.18											



**Grundwasserstände**

**Nr. 1164 GIBZ Berufsschule - Zug**

**KANTON ZUG**

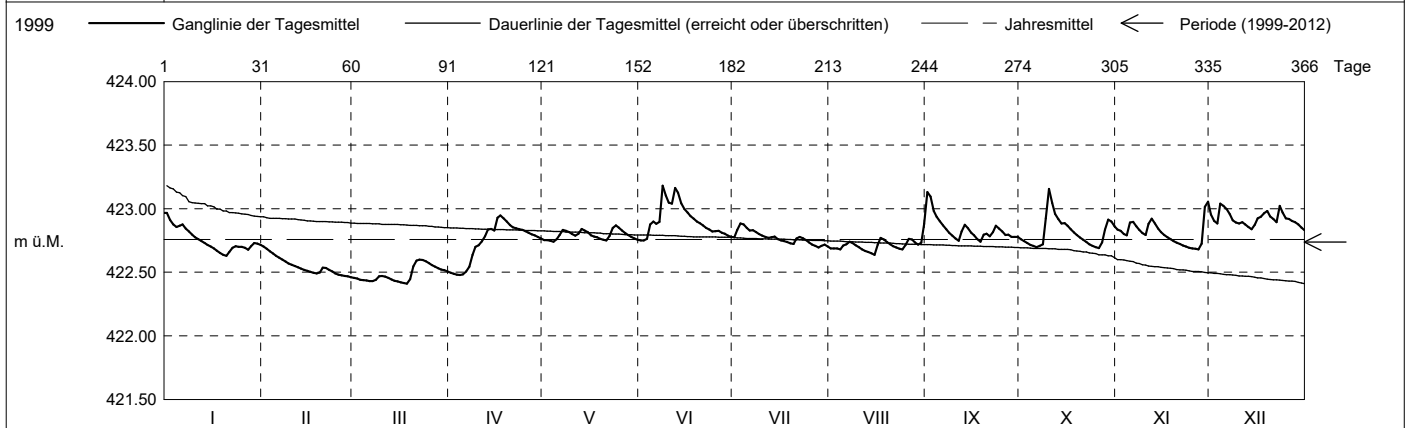
Koordinaten: 2'682'004' / 1'225'936'

Amt für Umwelt

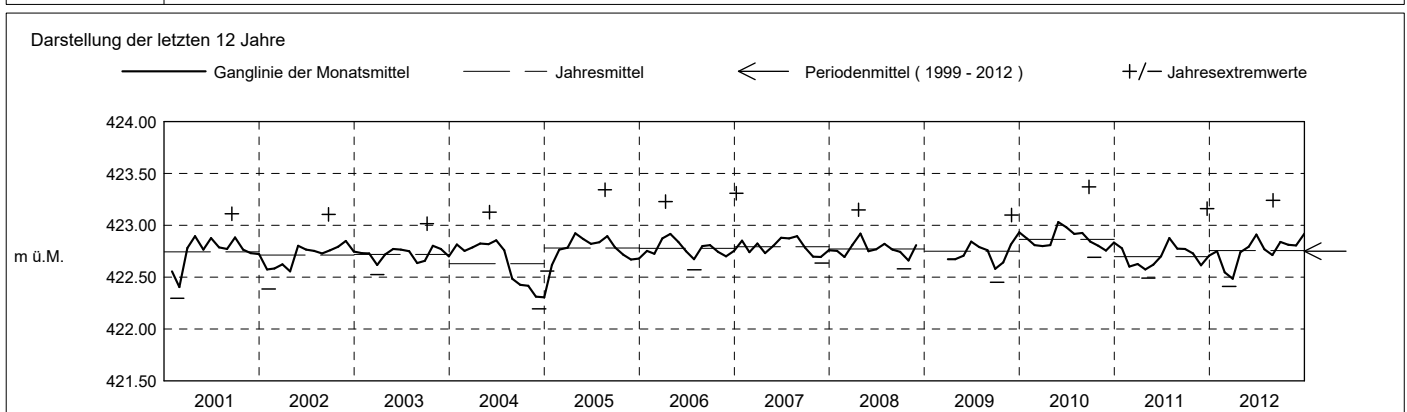
Abstichpunkt: 426.09 m ü.M. OK Terrain: 424.98 m ü.M.

2012	janvier	février	mars	avril	mai	juin	juillet	août	septembre	octobre	novembre	décembre		
Tagesmittel	1 422.97 +	422.70 +	422.46	422.50	422.75	422.75 -	422.77	422.69	423.13 +	422.76	422.83	422.95	1	
	2 422.91	422.68	422.45	422.49	422.75	422.75 -	422.83	422.69	423.09	422.74	422.82	422.90	2	
	3 422.88	422.67	422.44	422.48 -	422.75	422.76	422.88 +	422.69	422.98	422.73	422.80	422.89	3	
	4 422.86	422.65	422.44	422.48 -	422.74 -	422.88	422.88 +	422.68	422.94	422.71	422.79	423.04 +	4	
	5 422.87	422.63	422.43	422.48 -	422.76	422.90	422.85	422.71	422.90	422.71	422.89	423.02	5	
	6 422.88	422.61	422.43	422.51	422.79	422.88	422.83	422.72	422.87	422.70	422.90	423.00	6	
	7 422.84	422.60	422.43	422.54	422.83	422.90	422.83	422.74	422.84	422.71	422.86	422.96	7	
	8 422.82	422.58	422.44	422.64	422.83	423.18 +	422.82	422.73	422.81	422.72	422.83	422.91	8	
	9 422.80	422.57	422.47	422.70	422.82	423.10	422.80	422.71	422.79	422.92	422.81	422.89	9	
	10 422.78	422.56	422.47	422.71	422.80	423.05	422.79	422.70	422.77	423.16 +	422.79	422.89	10	
m ü.M.	11 422.76	422.55	422.47	422.74	422.79	423.04	422.78	422.68	422.75	423.05	422.88	422.89	11	
	12 422.75	422.54	422.46	422.78	422.80	423.16	422.77	422.67	422.82	422.96	422.92	422.88	12	
	13 422.73	422.53	422.44	422.84	422.84	423.13	422.77	422.66	422.87	422.92	422.88	422.86	13	
	14 422.72	422.52	422.43	422.84	422.83	423.04	422.78	422.65	422.85	422.88	422.84	422.84	14	
	15 422.70	422.51	422.43	422.83	422.81	423.00	422.76	422.64 -	422.81	422.89	422.82	422.87	15	
	16 422.69	422.50	422.42	422.93	422.79	422.97	422.75	422.72	422.79	422.86	422.79	422.92	16	
	17 422.67	422.50	422.42	422.95 +	422.78	422.94	422.74	422.77	422.76	422.84	422.78	422.94	17	
	18 422.65	422.49	422.41 -	422.92	422.77	422.92	422.74	422.76	422.74 -	422.81	422.76	422.96	18	
	19 422.64	422.50	422.45	422.90	422.76	422.90	422.73	422.74	422.80	422.79	422.75	422.98	19	
	20 422.63 -	422.54	422.55	422.87	422.76	422.89	422.72	422.72	422.80	422.77	422.73	422.94	20	
+ Maximum	21 422.66	422.53	422.59	422.85	422.75	422.87	422.76	422.71	422.78	422.76	422.72	422.92	21	
	22 422.69	422.52	422.60 +	422.85	422.79	422.85	422.78	422.70	422.82	422.74	422.71	422.89	22	
	23 422.71	422.51	422.60 +	422.84	422.85	422.83	422.77	422.68	422.87	422.72	422.70	423.02	23	
	24 422.70	422.49	422.59	422.83	422.87 +	422.82	422.75	422.68	422.84	422.71	422.69	422.97	24	
	25 422.70	422.48	422.57	422.82	422.85	422.82	422.74	422.72	422.82	422.70	422.69	422.92	25	
	- Minimum	26 422.69	422.48	422.56	422.81	422.83	422.83	422.72	422.76	422.79	422.69 -	422.68 -	422.92	26
		27 422.68	422.47	422.54	422.80	422.81	422.81	422.71	422.76	422.80	422.73	422.68 -	422.90	27
	28 422.71	422.47	422.53	422.79	422.79	422.80	422.70 -	422.73	422.78	422.84	422.72	422.89	28	
	29 422.73	422.46 -	422.52	422.78	422.78	422.79	422.71	422.72	422.78	422.91	423.01	422.88	29	
	30 422.72		422.52	422.77	422.77	422.78	422.72	422.73	422.78	422.90	423.05 +	422.85	30	
31 422.72		422.51	422.76	422.76	422.76	422.70 -	422.88 +	422.78	422.86	423.05 +	422.83 -	31		
Monatsmittel	422.75	422.55	422.49 -	422.74	422.79	422.91	422.77	422.71	422.84	422.81	422.81	422.92 +	m ü.M.	
Spitze Datum	422.99 1.	422.71 1.	422.60 - 21.	422.95 16.	422.87 23.	423.23 12.	422.89 3.	422.94 31.	423.24 + 1.	423.20 10.	423.19 29.	423.08 4.	m ü.M.	
Amplitude	0.36	0.25	0.19	0.48	0.14 -	0.48	0.20	0.31	0.51 +	0.51 +	0.51 +	0.26	m	

Jahr Mittel: 422.76 Spitze: 423.24 (01.09.2012) Minimum: 422.41 (17.03.2012) Amplitude: 0.83



Periode	1999 - 2012 (13 Jahre)												
Monatsmittel	422.71	422.68 -	422.73	422.77	422.79	422.81 +	422.78	422.74	422.72	422.69	422.70	422.71	m ü.M.
Monats-Spitze Jahr	423.31 2007	422.99 - 1999	423.02 2006	423.23 2006	423.33 2010	423.24 2010	423.17 2010	423.34 2005	423.37 + 2010	423.20 2012	423.19 2012	423.16 2011	m ü.M.
Monats-Minimum Jahr	422.34 2001	422.30 2001	422.41 2012	422.40 2002	422.44 2000	422.56 + 2000	422.39 1999	422.32 1999	422.27 2004	422.28 2004	422.23 2004	422.19 - 2004	m ü.M.
Monats-Amplitude Jahr	0.63 2007	0.35 - 2002	0.52 2001	0.48 2012	0.49 2010	0.48 2012	0.42 2008	0.59 2005	0.64 2010	0.52 1999	0.51 2012	0.65 + 2011	m ü.M.
Periode	Mittel: 422.74 Spitze: 423.37 (25.09.2010) Minimum: 422.19 (12.12.2004) Amplitude: 1.18												



**Grundwasserstände**

**Nr. 1164 GIBZ Berufsschule - Zug**

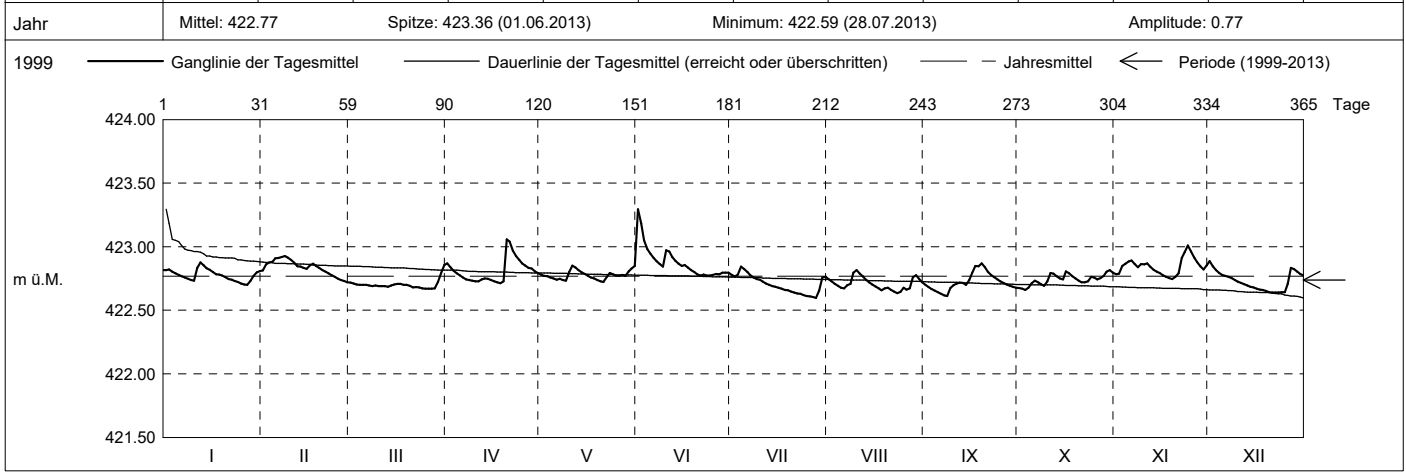
**KANTON ZUG**

Koordinaten: 2'682'004' / 1'225'936'

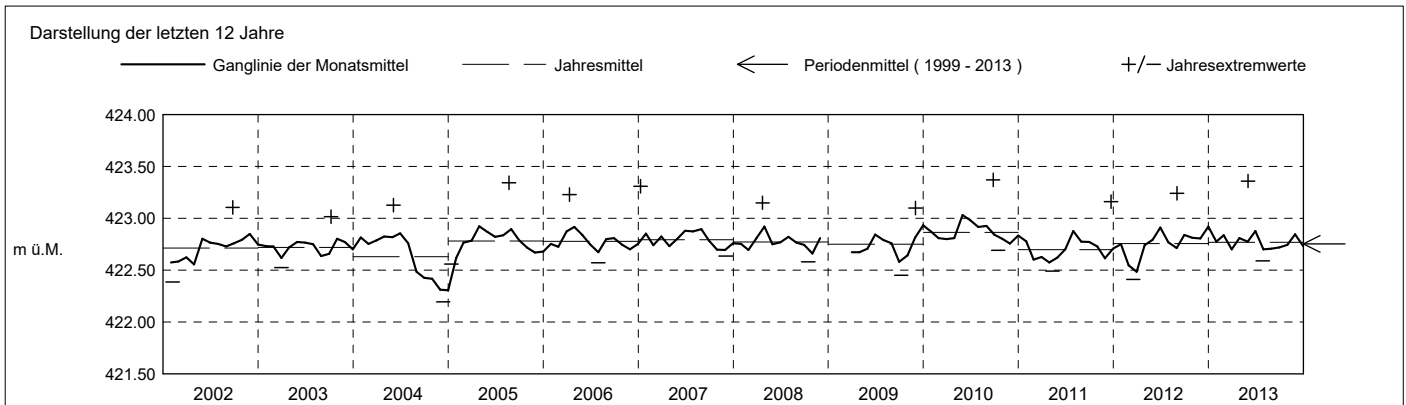
Amt für Umwelt

Abstichpunkt: 426.09 m ü.M. OK Terrain: 424.98 m ü.M.

2013	janvier	février	mars	avril	mai	juin	juillet	août	septembre	octobre	novembre	décembre																																				
Tagesmittel	1 422.81	422.81	422.72	422.87	422.78	423.30 +	422.78	422.75	422.70	422.68	422.78	422.89 +	1																																			
	2 422.82	422.86	422.71	422.84	422.77	423.18	422.77	422.73	422.68	422.67	422.79	422.85	2																																			
	3 422.80	422.88	422.70	422.81	422.77	423.05	422.78	422.71	422.67	422.66 -	422.85	422.82	3																																			
	4 422.79	422.88	422.70	422.79	422.76	422.98	422.84 +	422.69	422.65	422.68	422.87	422.79	4																																			
	5 422.78	422.91	422.70	422.77	422.75	422.94	422.82	422.68	422.64	422.71	422.89	422.78	5																																			
	6 422.77	422.91	422.70	422.76	422.74	422.91	422.80	422.67	422.63	422.73	422.89	422.77	6																																			
	7 422.75	422.92	422.69	422.74	422.75	422.89	422.77	422.70	422.62	422.72	422.86	422.76	7																																			
	8 422.76	422.93 +	422.69	422.74	422.74	422.86	422.76	422.71	422.61 -	422.70	422.84	422.75	8																																			
	9 422.74	422.91	422.69	422.73	422.73	422.84	422.74	422.80	422.67	422.69	422.86	422.74	9																																			
	10 422.73	422.90	422.69	422.73	422.80	422.97	422.74	422.81 +	422.70	422.73	422.86	422.73	10																																			
	11 422.83	422.87	422.69	422.73	422.85 +	422.96	422.72	422.79	422.71	422.79	422.87	422.71	11																																			
	12 422.88 +	422.85	422.69	422.74	422.84	422.92	422.71	422.76	422.72	422.79	422.84	422.70	12																																			
	13 422.85	422.84	422.68	422.75	422.81	422.89	422.70	422.74	422.72	422.77	422.82	422.70	13																																			
m ü.M.	14 422.83	422.83	422.70	422.75	422.80	422.87	422.69	422.72	422.70	422.75	422.80	422.68	14																																			
	15 422.82	422.83	422.70	422.74	422.79	422.85	422.69	422.70	422.74	422.74	422.79	422.68	15																																			
	16 422.80	422.85	422.71	422.73	422.77	422.86	422.68	422.69	422.79	422.81 +	422.78	422.67	16																																			
	17 422.78	422.86	422.71	422.72	422.76	422.84	422.67	422.67	422.85	422.79	422.76	422.66	17																																			
	18 422.78	422.85	422.70	422.71 -	422.75	422.82	422.66	422.66	422.85	422.77	422.75 -	422.66	18																																			
	19 422.77	422.83	422.70	422.73	422.74	422.80	422.66	422.67	422.87 +	422.75	422.75 -	422.65	19																																			
	20 422.76	422.81	422.69	423.06 +	422.73	422.78	422.65	422.68	422.84	422.73	422.76	422.64 -	20																																			
	21 422.74	422.80	422.68	423.04	422.72 -	422.77 -	422.64	422.66	422.80	422.72	422.79	422.64 -	21																																			
	22 422.74	422.79	422.68	422.97	422.76	422.78	422.63	422.65	422.78	422.72	422.91	422.64 -	22																																			
	23 422.73	422.77	422.68	422.93	422.79	422.77 -	422.63	422.64 -	422.76	422.73	422.96	422.64 -	23																																			
	24 422.72	422.76	422.67 -	422.90	422.78	422.77 -	422.62	422.65	422.74	422.76	423.01 +	422.64 -	24																																			
+ Maximum	25 422.71	422.75	422.67 -	422.87	422.77	422.78	422.61	422.68	422.73	422.76	422.96	422.64 -	25																																			
- Minimum	26 422.70 -	422.74	422.67 -	422.85	422.77	422.79	422.61	422.66	422.71	422.74	422.92	422.71	26																																			
	27 422.70 -	422.73	422.67 -	422.83	422.78	422.78	422.60 -	422.67	422.70	422.75	422.88	422.83	27																																			
	28 422.73	422.72 -	422.67 -	422.83	422.77	422.80	422.60 -	422.76	422.69	422.77	422.85	422.82	28																																			
	29 422.77	422.72	422.72	422.81	422.81	422.79	422.65	422.78	422.68	422.80	422.82	422.80	29																																			
	30 422.80	422.79	422.79	422.79	422.83	422.80	422.76	422.75	422.68	422.81 +	422.85	422.79	30																																			
	31 422.81	422.86 +			422.85 +		422.76	422.72		422.79		422.77	31																																			
Monatsmittel	422.77	422.84	422.70 -	422.81	422.78	422.88 +	422.70 -	422.71	422.72	422.74	422.85	422.73	m ü.M.																																			
Spitze Datum	422.88 12.	422.93 7.	422.88 31.	423.17 20.	422.98 31.	423.36 + 1.	422.85 4.	422.82 - 9.	422.88 19.	422.82 - 29.	423.02 24.	422.90 1.	m ü.M.																																			
Amplitude	0.19	0.21	0.21	0.46	0.26	0.60 +	0.26	0.20	0.28	0.17 -	0.28	0.26	m																																			
Jahr	Mittel: 422.77												Spitze: 423.36 (01.06.2013)												Minimum: 422.59 (28.07.2013)												Amplitude: 0.77											



Periode	1999 - 2013 (14 Jahre)																																															
Monatsmittel	422.72	422.69 -	422.73	422.77	422.78	422.82 +	422.78	422.74	422.72	422.70	422.71	422.71	m ü.M.																																			
Monats-Spitze Jahr	423.31 2007	422.99 - 1999	423.02 2006	423.23 2006	423.33 2010	423.36 2013	423.17 2010	423.34 2005	423.37 + 2010	423.20 2012	423.19 2012	423.16 2011	m ü.M.																																			
Monats-Minimum Jahr	422.34 2001	422.30 2001	422.41 2012	422.40 2002	422.44 2000	422.56 + 2000	422.39 1999	422.32 1999	422.27 2004	422.28 2004	422.23 2004	422.19 - 2004	m ü.M.																																			
Monats-Amplitude Jahr	0.63 2007	0.35 - 2002	0.52 2001	0.48 2012	0.49 2010	0.60 2013	0.42 2008	0.59 2005	0.64 2010	0.52 1999	0.51 2012	0.65 + 2011	m ü.M.																																			
Periode	Mittel: 422.74												Spitze: 423.37 (25.09.2010)												Minimum: 422.19 (12.12.2004)												Amplitude: 1.18											



**Grundwasserstände**

**Nr. 1164 GIBZ Berufsschule - Zug**

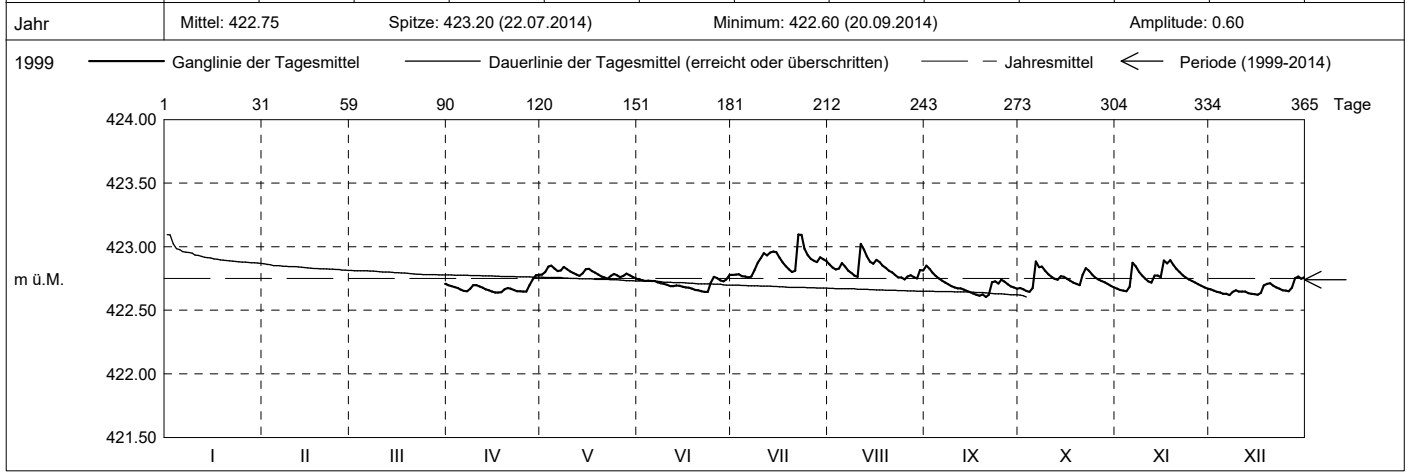
**KANTON ZUG**

Koordinaten: 2'682'004' / 1'225'936'

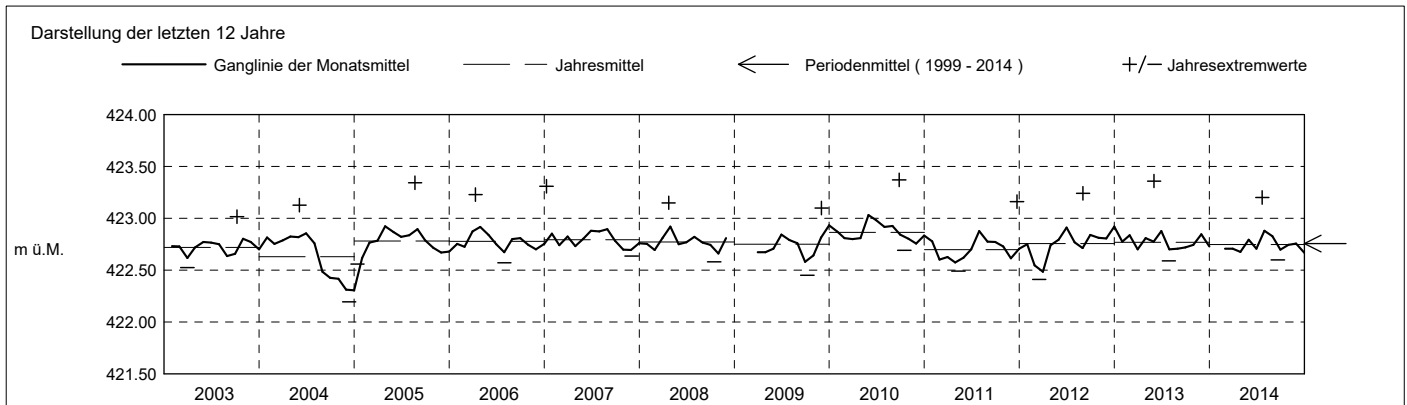
Amt für Umwelt

Abstichpunkt: 426.09 m ü.M. OK Terrain: 424.98 m ü.M.

2014		janvier	février	mars	avril	mai	juin	juillet	août	septembre	octobre	novembre	décembre	
Tagesmittel	1				422.70	422.78	422.74	422.78	422.86	422.85 +	422.67	422.67	422.67	1
	2				422.69	422.80	422.74	422.78	422.84	422.83	422.67	422.66	422.65	2
	3				422.68	422.84	422.73	422.78	422.82	422.80	422.65	422.65 -	422.64	3
	4				422.67	422.85 +	422.73	422.77	422.83	422.77	422.64 -	422.65 -	422.64	4
	5				422.66	422.83	422.73	422.77	422.87	422.75	422.67	422.68	422.63	5
	6				422.65	422.81	422.73	422.76 -	422.84	422.73	422.89 +	422.87	422.63	6
	7				422.65	422.81	422.72	422.77	422.81	422.72	422.84	422.85	422.62 -	7
	8				422.67	422.84	422.71	422.81	422.79	422.71	422.84	422.80	422.64	8
	9				422.70	422.82	422.71	422.87	422.77	422.69	422.81	422.77	422.66	9
	10				422.70	422.81	422.70	422.91	422.76	422.68	422.78	422.75	422.65	10
m ü.M.	11				422.69	422.79	422.69	422.95	423.02 +	422.67	422.76	422.73	422.65	11
	12				422.68	422.78	422.69	422.93	422.98	422.67	422.75	422.72	422.65	12
	13				422.67	422.77	422.70	422.95	422.92	422.66	422.74	422.77	422.64	13
	14				422.66	422.79	422.69	422.96	422.88	422.65	422.77	422.77	422.63	14
	15				422.65	422.82	422.69	422.96	422.87	422.64	422.76	422.76	422.63	15
	16				422.64 -	422.83	422.68	422.91	422.90	422.63	422.75	422.89 +	422.62 -	16
	17				422.64 -	422.81	422.68	422.88	422.88	422.62	422.73	422.87	422.64	17
	18				422.64 -	422.80	422.67	422.85	422.85	422.61	422.72	422.89 +	422.69	18
	19				422.67	422.78	422.66	422.82	422.83	422.63	422.71	422.86	422.71	19
	20				422.68	422.77	422.66	422.80	422.81	422.60 -	422.70	422.83	422.71	20
+ Maximum	21				422.67	422.76	422.65	422.81	422.80	422.62	422.78	422.80	422.69	21
	22				422.66	422.75 -	422.64 -	423.10 +	422.78	422.72	422.83	422.78	422.68	22
	23				422.65	422.77	422.64 -	423.09	422.76	422.73	422.81	422.76	422.67	23
	24				422.65	422.79	422.72	422.99	422.76	422.71	422.78	422.74	422.66	24
	25				422.65	422.77	422.76	422.93	422.74 -	422.74	422.76	422.73	422.65	25
	26				422.65	422.76	422.75	422.90	422.76	422.73	422.74	422.72	422.65	26
	27				422.70	422.77	422.74	422.89	422.77	422.71	422.73	422.71	422.68	27
	28				422.74	422.79	422.73	422.88	422.76	422.69	422.72	422.69	422.75	28
	29				422.77	422.78	422.74	422.92	422.75	422.68	422.71	422.68	422.77 +	29
	30				422.78 +	422.76	422.78 +	422.90	422.82	422.67	422.69	422.67	422.75	30
31			422.71 -		422.75 -		422.89	422.81	422.67	422.68	422.67	422.76	31	
Monatsmittel			422.71	422.68	422.79	422.71	422.88 +	422.83	422.70	422.74	422.76	422.67 -	m ü.M.	
Spitze Datum			422.71 - 31.	422.78 29.	422.86 4.	422.78 30.	423.20 + 22.	423.09 11.	422.86 1.	422.91 6.	422.91 16.	422.77 28.	m ü.M.	
Amplitude			0.01 -	0.15	0.12	0.14	0.45 +	0.35	0.26	0.28	0.27	0.15	m	
Jahr	Mittel: 422.75      Spitze: 423.20 (22.07.2014)      Minimum: 422.60 (20.09.2014)      Amplitude: 0.60													



Periode	1999 - 2014 (15 Jahre)												
Monatsmittel	422.72	422.69 -	422.73	422.77	422.79	422.81 +	422.78	422.74	422.72	422.70	422.71	422.70	m ü.M.
Monats-Spitze Jahr	423.31 2007	422.99 - 1999	423.02 2006	423.23 2006	423.33 2010	423.36 2013	423.20 2014	423.34 2005	423.37 + 2010	423.20 2012	423.19 2012	423.16 2011	m ü.M.
Monats-Minimum Jahr	422.34 2001	422.30 2001	422.41 2012	422.40 2002	422.44 2000	422.56 + 2000	422.39 1999	422.32 1999	422.27 2004	422.28 2004	422.23 2004	422.19 - 2004	m ü.M.
Monats-Amplitude Jahr	0.63 2007	0.35 - 2002	0.52 2001	0.48 2012	0.49 2010	0.60 2013	0.45 2014	0.59 2005	0.64 2010	0.52 1999	0.51 2012	0.65 + 2011	m ü.M.
Periode	Mittel: 422.74      Spitze: 423.37 (25.09.2010)      Minimum: 422.19 (12.12.2004)      Amplitude: 1.18												





**Grundwasserstände**

**Nr. 1164 GIBZ Berufsschule - Zug**

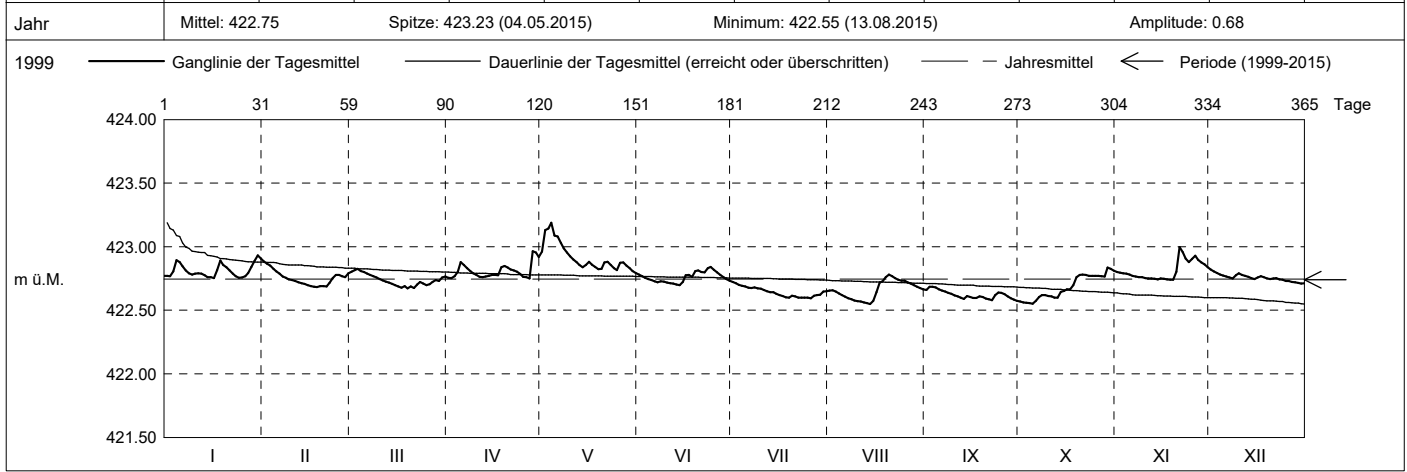
**KANTON ZUG**

Koordinaten: 2'682'004' / 1'225'936'

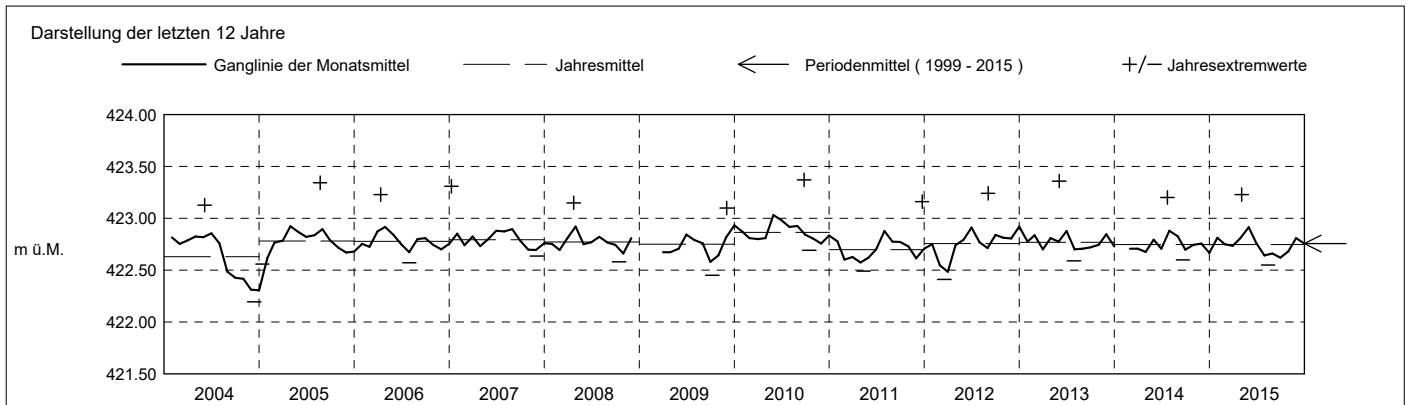
Amt für Umwelt

Abstichpunkt: 426.09 m ü.M. OK Terrain: 424.98 m ü.M.

2015	janvier	février	mars	avril	mai	juin	juillet	août	septembre	octobre	novembre	décembre	
Tagesmittel	1 422.77	422.88 +	422.80	422.76	422.96	422.78	422.72 +	422.65	422.66	422.57	422.80	422.82 +	1
	2 422.77	422.87	422.82	422.75 -	423.13	422.77	422.71	422.66	422.68 +	422.56	422.80	422.80	2
	3 422.81	422.85	422.83 +	422.77	423.14	422.76	422.70	422.65	422.68 +	422.56	422.79	422.79	3
	4 422.89	422.83	422.81	422.80	423.19 +	422.74	422.69	422.63	422.68 +	422.56	422.79	422.78	4
	5 422.88	422.81	422.80	422.88	423.09	422.74	422.69	422.62	422.66	422.55 -	422.78	422.77	5
	6 422.85	422.79	422.79	422.86	423.08	422.73	422.68	422.61	422.65	422.57	422.77	422.77	6
	7 422.81	422.77	422.78	422.83	423.03	422.72	422.68	422.60	422.65	422.60	422.77	422.76	7
	8 422.79	422.76	422.77	422.81	422.99	422.73	422.68	422.59	422.64	422.62	422.76	422.75	8
	9 422.78	422.74	422.76	422.79	422.95	422.72	422.67	422.58	422.63	422.62	422.76	422.77	9
	10 422.79	422.74	422.74	422.78	422.92	422.72	422.67	422.57	422.62	422.61	422.75	422.79	10
m ü.M.	11 422.79	422.73	422.73	422.76	422.90	422.71	422.66	422.57	422.61	422.61	422.75	422.78	11
	12 422.79	422.72	422.72	422.76	422.88	422.71	422.65	422.56	422.60	422.60	422.75	422.77	12
	13 422.77	422.71	422.72	422.77	422.86	422.70 -	422.64	422.56	422.59	422.60	422.75	422.76	13
	14 422.76	422.71	422.71	422.77	422.84	422.70 -	422.64	422.55 -	422.61	422.64	422.74 -	422.75	14
	15 422.76	422.70	422.70	422.78	422.85	422.72	422.63	422.57	422.60	422.65	422.75	422.75	15
	16 422.75 -	422.69	422.69	422.78	422.88	422.77	422.62	422.64	422.60	422.67	422.75	422.76	16
	17 422.82	422.68 -	422.68	422.78	422.86	422.78	422.61	422.72	422.60	422.67	422.74 -	422.77	17
	18 422.89	422.68 -	422.69	422.84	422.84	422.76	422.60	422.73	422.61	422.70	422.74 -	422.76	18
	19 422.86	422.69	422.67 -	422.85	422.82	422.81	422.60	422.76	422.60	422.76	422.74 -	422.75	19
	20 422.84	422.69	422.69	422.84	422.83	422.81	422.61	422.78 +	422.59	422.78	422.80	422.75	20
+ Maximum	21 422.81	422.69	422.67 -	422.82	422.88	422.80	422.61	422.77	422.59	422.78	423.00 +	422.75	21
	22 422.79	422.71	422.70	422.81	422.88	422.80	422.60	422.75	422.58	422.78	422.96	422.75	22
	23 422.77	422.75	422.72	422.80	422.86	422.83	422.60	422.74	422.62	422.77	422.91	422.74	23
	24 422.76	422.78	422.71	422.79	422.83	422.84 +	422.60	422.73	422.64	422.77	422.88	422.74	24
	25 422.76	422.78	422.70	422.76	422.82	422.82	422.60	422.73	422.64	422.77	422.90	422.73	25
	26 422.77	422.77	422.71	422.76	422.87	422.80	422.59 -	422.72	422.63	422.77	422.93	422.73	26
	27 422.79	422.76	422.72	422.75 -	422.88	422.80	422.61	422.71	422.61	422.77	422.90	422.72	27
	28 422.84	422.79	422.74	422.96 +	422.85	422.76	422.62	422.70	422.59	422.77	422.88	422.72	28
	29 422.89	422.73	422.73	422.96 +	422.83	422.75	422.62	422.69	422.58	422.83 +	422.86	422.71 -	29
	30 422.93 +	422.76	422.76	422.92	422.81	422.73	422.65	422.67	422.57 -	422.83 +	422.84	422.71 -	30
31 422.91	422.76	422.76	422.92	422.79 -	422.73	422.65	422.66	422.66	422.81	422.71 -	422.71 -	31	
Monatsmittel	422.81	422.75	422.74	422.81	422.91 +	422.76	422.64	422.66	422.62 -	422.68	422.81	422.76	m ü.M.
Spitze Datum	422.94 30.	422.89 1.	422.83 2.	423.02 28.	423.23 + 4.	422.85 23.	422.73 1.	422.79 20.	422.69 - 2.	422.85 29.	423.02 21.	422.83 1.	m ü.M.
Amplitude	0.20	0.21	0.17	0.27	0.44 +	0.16	0.14	0.24	0.12 -	0.30	0.28	0.12 -	m
Jahr	Mittel: 422.75      Spitze: 423.23 (04.05.2015)      Minimum: 422.55 (13.08.2015)      Amplitude: 0.68												



Periode	1999 - 2015 (16 Jahre)												
Monatsmittel	422.73	422.69 -	422.73	422.77	422.79	422.81 +	422.78	422.74	422.71	422.70	422.72	422.71	m ü.M.
Monats-Spitze Jahr	423.31 2007	422.99 - 1999	423.02 2006	423.23 2006	423.33 2010	423.36 2013	423.20 2014	423.34 2005	423.37 + 2010	423.20 2012	423.19 2012	423.16 2011	m ü.M.
Monats-Minimum Jahr	422.34 2001	422.30 2001	422.41 2012	422.40 2002	422.44 2000	422.56 + 2000	422.39 1999	422.32 1999	422.27 2004	422.28 2004	422.23 2004	422.19 - 2004	m ü.M.
Monats-Amplitude Jahr	0.63 2007	0.35 - 2002	0.52 2001	0.48 2012	0.49 2010	0.60 2013	0.45 2014	0.59 2005	0.64 2010	0.52 1999	0.51 2012	0.65 + 2011	m ü.M.
Periode	Mittel: 422.74      Spitze: 423.37 (25.09.2010)      Minimum: 422.19 (12.12.2004)      Amplitude: 1.18												



**Grundwasserstände**

**Nr. 1164 GIBZ Berufsschule - Zug**

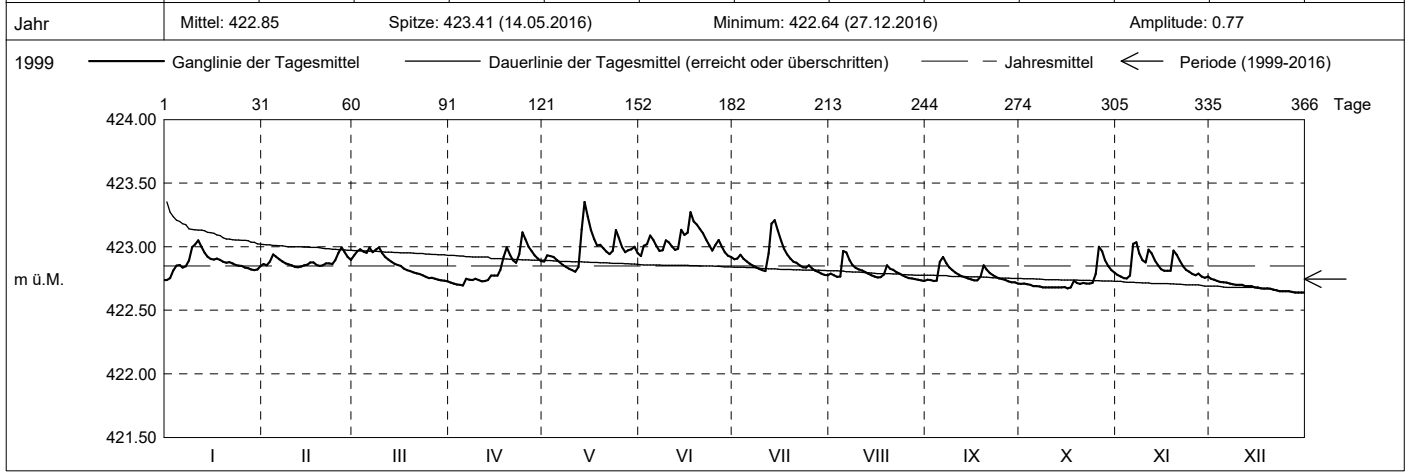
**KANTON ZUG**

Koordinaten: 2'682'004' / 1'225'936'

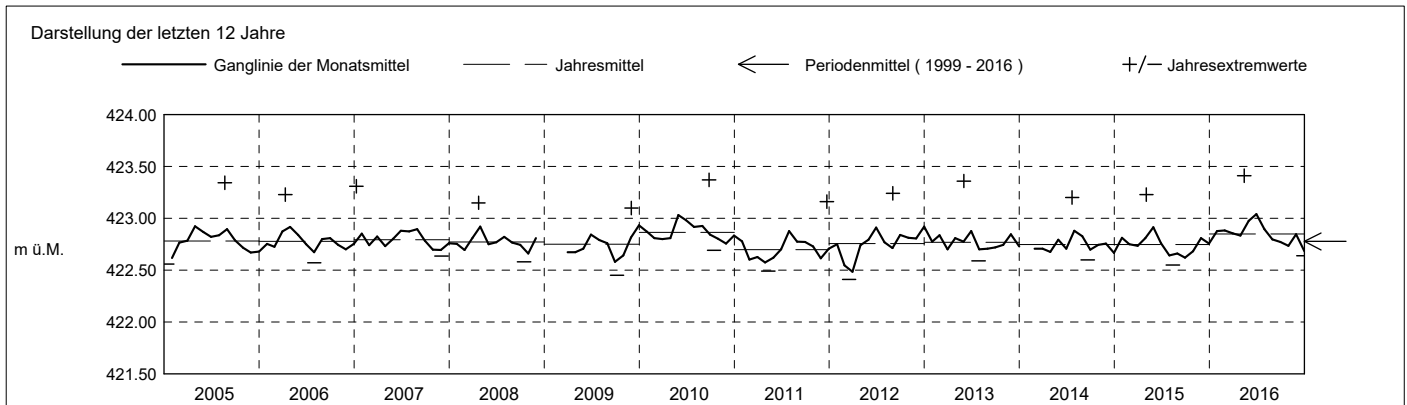
Amt für Umwelt

Abstichpunkt: 426.09 m ü.M. OK Terrain: 424.98 m ü.M.

2016	janvier	février	mars	avril	mai	juin	juillet	août	septembre	octobre	novembre	décembre	
Tagesmittel	1 422.74 -	422.86	422.93	422.72	422.88	422.93	422.90	422.79	422.74	422.71	422.78	422.75 +	1
	2 422.75	422.85	422.96	422.71	422.93	423.01	422.91	422.77	422.74	422.71	422.77	422.74	2
	3 422.81	422.89	422.98	422.70	422.93	423.02	422.94	422.76	422.73	422.71	422.75 -	422.73	3
	4 422.85	422.94	422.96	422.70	422.92	423.09	422.90	422.77	422.73	422.70	422.75 -	422.72	4
	5 422.86	422.92	422.95	422.69 -	422.90	423.05	422.88	422.97 +	422.88	422.69	422.77	422.72	5
	6 422.84	422.90	422.99 +	422.75	422.88	423.01	422.87	422.95	422.92 +	422.69	423.02	422.72	6
	7 422.85	422.88	422.96	422.74	422.86	422.97	422.85	422.89	422.87	422.69	423.03 +	422.71	7
	8 422.89	422.87	422.98	422.74	422.84	422.97	422.84	422.86	422.84	422.68	422.95	422.70	8
	9 423.00	422.86	422.99 +	422.75	422.83	423.05	422.83	422.83	422.82	422.68	422.90	422.70	9
	10 423.02	422.85	422.95	422.74	422.81	423.04	422.82	422.82	422.80	422.68	422.88	422.70	10
m ü.M.	11 423.05 +	422.84 -	422.92	422.73	422.80 -	423.00	422.81	422.81	422.78	422.68	422.98	422.70	11
	12 423.00	422.84 -	422.90	422.73	422.84	422.97	422.95	422.80	422.77	422.68	422.95	422.69	12
	13 422.95	422.84 -	422.88	422.74	423.14	422.98	423.18	422.79	422.76	422.68	422.89	422.69	13
	14 422.92	422.85	422.87	422.77	423.35 +	423.13	423.21 +	422.78	422.75	422.68	422.85	422.69	14
	15 422.90	422.86	422.86	422.77	423.24	423.09	423.13	422.77	422.74	422.68	422.82	422.68	15
	16 422.90	422.88	422.85	422.77	423.13	423.11	423.05	422.76	422.73	422.67 -	422.81	422.68	16
	17 422.91	422.88	422.83	422.82	423.06	423.27 +	422.99	422.76	422.74	422.68	422.81	422.67	17
	18 422.90	422.86	422.82	422.92	423.01	423.20	422.94	422.78	422.76	422.73	422.81	422.67	18
	19 422.88	422.85	422.81	422.99	423.02	423.17	422.91	422.85	422.85	422.72	422.97	422.67	19
	20 422.87	422.85	422.80	422.94	422.99	423.14	422.88	422.83	422.82	422.71	422.94	422.67	20
+ Maximum	21 422.88	422.87	422.79	422.89	422.96	423.11	422.87	422.82	422.79	422.71	422.89	422.66	21
	22 422.87	422.87	422.79	422.87	422.94	423.05	422.85	422.80	422.78	422.71	422.85	422.66	22
	23 422.86	422.86	422.78	422.94	422.97	423.01	422.84	422.79	422.76	422.71	422.82	422.65	23
	24 422.85	422.90	422.76	423.11 +	423.13	422.97	422.83	422.77	422.75	422.71	422.80	422.65	24
	25 422.85	422.95	422.75	423.06	423.07	423.01	422.85	422.76	422.75	422.79	422.79	422.65	25
	26 422.84	422.99 +	422.76	423.00	423.00	423.05	422.83	422.75	422.74	423.00 +	422.77	422.65	26
	27 422.83	422.96	422.75	422.96	422.96	423.00	422.81	422.75	422.73	422.78	422.79	422.64 -	27
	28 422.82	422.92	422.74	422.93	422.97	422.96	422.80	422.75	422.72	422.90	422.77	422.64 -	28
	29 422.82	422.90	422.73 -	422.91	422.98	422.93	422.79	422.74	422.72	422.85	422.76	422.64 -	29
	30 422.82	422.90	422.73 -	422.89	423.00	422.92 -	422.78 -	422.74 -	422.71 -	422.82	422.77	422.64 -	30
31 422.85	422.90	422.73 -	422.89	422.95	422.92 -	422.78 -	422.73 -	422.71 -	422.79	422.77	422.64 -	31	
Monatsmittel	422.88	422.88	422.85	422.83	422.98	423.04 +	422.90	422.80	422.77	422.74	422.85	422.68 -	m ü.M.
Spitze Datum	423.06 11.	423.01 26.	423.02 8.	423.12 24.	423.41 + 14.	423.33 17.	423.28 13.	423.00 5.	422.94 5.	423.06 26.	423.08 6.	422.76 - 1.	m ü.M.
Amplitude	0.34	0.18	0.30	0.43	0.61 +	0.42	0.51	0.27	0.23	0.39	0.34	0.12 -	m
Jahr	Mittel: 422.85      Spitze: 423.41 (14.05.2016)      Minimum: 422.64 (27.12.2016)      Amplitude: 0.77												



Periode	1999 - 2016 (17 Jahre)												
Monatsmittel	422.73	422.71	422.74	422.77	422.80	422.82 +	422.78	422.74	422.71	422.70 -	422.73	422.71	m ü.M.
Monats-Spitze Jahr	423.31 2007	423.01 - 2016	423.02 2006	423.23 2006	423.41 + 2016	423.36 2013	423.28 2016	423.34 2005	423.37 2010	423.20 2012	423.19 2012	423.16 2011	m ü.M.
Monats-Minimum Jahr	422.34 2001	422.30 2001	422.41 2012	422.40 2002	422.44 2000	422.56 + 2000	422.39 1999	422.32 1999	422.27 2004	422.28 2004	422.23 2004	422.19 - 2004	m ü.M.
Monats-Amplitude Jahr	0.63 2007	0.35 - 2002	0.52 2001	0.48 2012	0.61 2016	0.60 2013	0.51 2016	0.59 2005	0.64 2010	0.52 1999	0.51 2012	0.65 + 2011	m ü.M.
Periode	Mittel: 422.75      Spitze: 423.41 (14.05.2016)      Minimum: 422.19 (12.12.2004)      Amplitude: 1.22												



**Grundwasserstände**

**Nr. 1164 GIBZ Berufsschule - Zug**

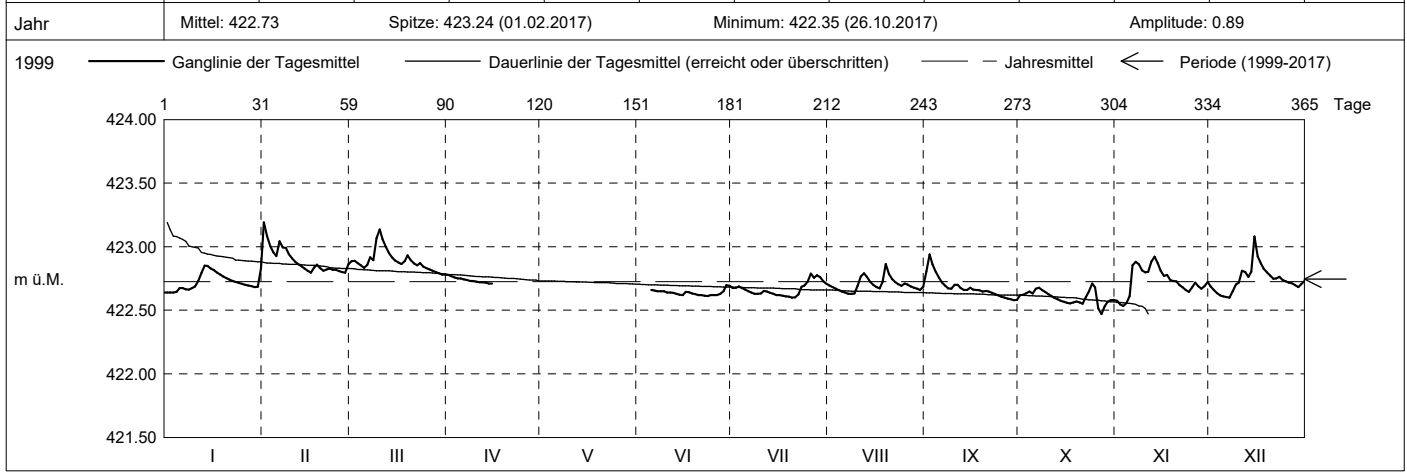
**KANTON ZUG**

Koordinaten: 2'682'004' / 1'225'936'

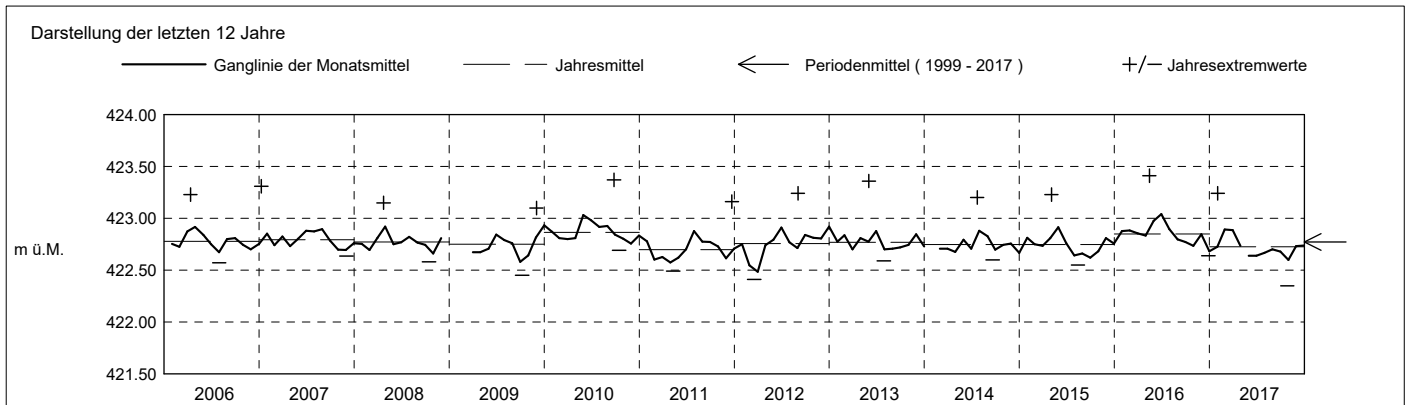
Amt für Umwelt

Abstichpunkt: 426.09 m ü.M. OK Terrain: 424.98 m ü.M.

2017	janvier	février	mars	avril	mai	juin	juillet	août	septembre	octobre	novembre	décembre																																				
Tagesmittel	1 422.64 -	423.19 +	422.89	422.78 +			422.68	422.70	422.81	422.62	422.57	422.69	1																																			
	2 422.64 -	423.08	422.89	422.77			422.68	422.68	422.94 +	422.62	422.55	422.66	2																																			
	3 422.64 -	423.01	422.87	422.76			422.69	422.67	422.86	422.64	422.53 -	422.63	3																																			
	4 422.65	422.95	422.85	422.75			422.68	422.66	422.80	422.65	422.56	422.62	4																																			
	5 422.68	422.93	422.83	422.75		422.66	422.66	422.65	422.76	422.63	422.61	422.61	5																																			
	6 422.67	423.04	422.86	422.74		422.65	422.65	422.64	422.72	422.67	422.85	422.61	6																																			
	7 422.67	422.99	422.92	422.74		422.65	422.64	422.63 -	422.69	422.68	422.88	422.60 -	7																																			
	8 422.66	422.99	422.89	422.73		422.65	422.63	422.63 -	422.67	422.66	422.86	422.65	8																																			
	9 422.67	422.94	423.07	422.73		422.65	422.63	422.63 -	422.67	422.65	422.81	422.70	9																																			
	10 422.69	422.91	423.14 +	422.73		422.64	422.63	422.63	422.70	422.63	422.80	422.72	10																																			
	11 422.73	422.88	423.06	422.72		422.64	422.65	422.77	422.70	422.61	422.80	422.81	11																																			
	12 422.79	422.86	423.00	422.72		422.64	422.65	422.79	422.67	422.60	422.88	422.80	12																																			
m ü.M.	13 422.85 +	422.85	422.95	422.72		422.63	422.64	422.76	422.66	422.59	422.92 +	422.76	13																																			
	14 422.85 +	422.83	422.91	422.71 -		422.62	422.63	422.72	422.66	422.57	422.87	422.80	14																																			
	15 422.83	422.81	422.89	422.71 -		422.62	422.62	422.70	422.68	422.57	422.81	423.08 +	15																																			
	16 422.82	422.80	422.88			422.64	422.62	422.68	422.66	422.56	422.77	422.92	16																																			
	17 422.80	422.84	422.86			422.64	422.61	422.67	422.66	422.55	422.78	422.87	17																																			
	18 422.78	422.86	422.89			422.63	422.61	422.72	422.66	422.56	422.74	422.83	18																																			
	19 422.76	422.83	422.93			422.63	422.61	422.86 +	422.65	422.57	422.73	422.80	19																																			
	20 422.75	422.81	422.89			422.62	422.60 -	422.79	422.65	422.56	422.73	422.77	20																																			
	21 422.74	422.82	422.87			422.62	422.60 -	422.75	422.65	422.55	422.70	422.75	21																																			
	22 422.73	422.83	422.85			422.61 -	422.62	422.72	422.64	422.60	422.68	422.75	22																																			
	23 422.72	422.82	422.87			422.61 -	422.69	422.70	422.63	422.65	422.66	422.76	23																																			
	24 422.72	422.82	422.84			422.62	422.70	422.69	422.62	422.71 +	422.65	422.74	24																																			
	25 422.71	422.81	422.83			422.62	422.73	422.71	422.61	422.68	422.68	422.73	25																																			
+ Maximum	26 422.70	422.80	422.82			422.62	422.79 +	422.70	422.60	422.51	422.72	422.72	26																																			
	27 422.69	422.79 -	422.81			422.63	422.76	422.69	422.59	422.47 -	422.69	422.71	27																																			
- Minimum	28 422.69	422.86	422.80			422.65	422.77	422.68	422.59	422.53	422.67	422.70	28																																			
	29 422.68		422.79			422.70 +	422.76	422.68	422.57	422.57	422.69	422.68	29																																			
	30 422.68		422.78 -			422.69	422.73	422.66	422.58 -	422.58	422.72	422.70	30																																			
	31 422.83		422.78 -			422.69	422.71	422.68	422.58 -	422.58	422.72	422.73	31																																			
Monatsmittel	422.72	422.89 +	422.89 +	422.74		422.64	422.67	422.70	422.68	422.60 -	422.73	422.74	m ü.M.																																			
Spitze Datum	423.10 31.	423.24 + 1.	423.18 10.	422.78 1.		422.70 - 29.	422.80 26.	422.93 18.	422.97 2.	422.72 24.	422.97 12.	423.19 15.	m ü.M.																																			
Amplitude	0.46	0.45	0.40	0.07 -		0.09	0.21	0.31	0.39	0.37	0.46	0.59 +	m																																			
Jahr	Mittel: 422.73												Spitze: 423.24 (01.02.2017)												Minimum: 422.35 (26.10.2017)												Amplitude: 0.89											



Periode	1999 - 2017 ( 18 Jahre )																																															
Monatsmittel	422.73	422.72	422.74	422.77	422.80	422.81 +	422.78	422.74	422.71	422.69 -	422.73	422.71	m ü.M.																																			
Monats-Spitze Jahr	423.31 2007	423.24 2017	423.18 - 2017	423.23 2006	423.41 + 2016	423.36 2013	423.28 2016	423.34 2005	423.37 2010	423.20 2012	423.19 2012	423.19 2017	m ü.M.																																			
Monats-Minimum Jahr	422.34 2001	422.30 2001	422.41 2012	422.40 2002	422.44 2000	422.56 + 2000	422.39 1999	422.32 1999	422.27 2004	422.28 2004	422.23 2004	422.19 - 2004	m ü.M.																																			
Monats-Amplitude Jahr	0.63 2007	0.45 - 2017	0.52 2001	0.48 2012	0.61 2016	0.60 2013	0.51 2016	0.59 2005	0.64 2010	0.52 1999	0.51 2012	0.65 + 2011	m ü.M.																																			
Periode	Mittel: 422.75												Spitze: 423.41 (14.05.2016)												Minimum: 422.19 (12.12.2004)												Amplitude: 1.22											



**Grundwasserstände**

**Nr. 1164 GIBZ Berufsschule - Zug**

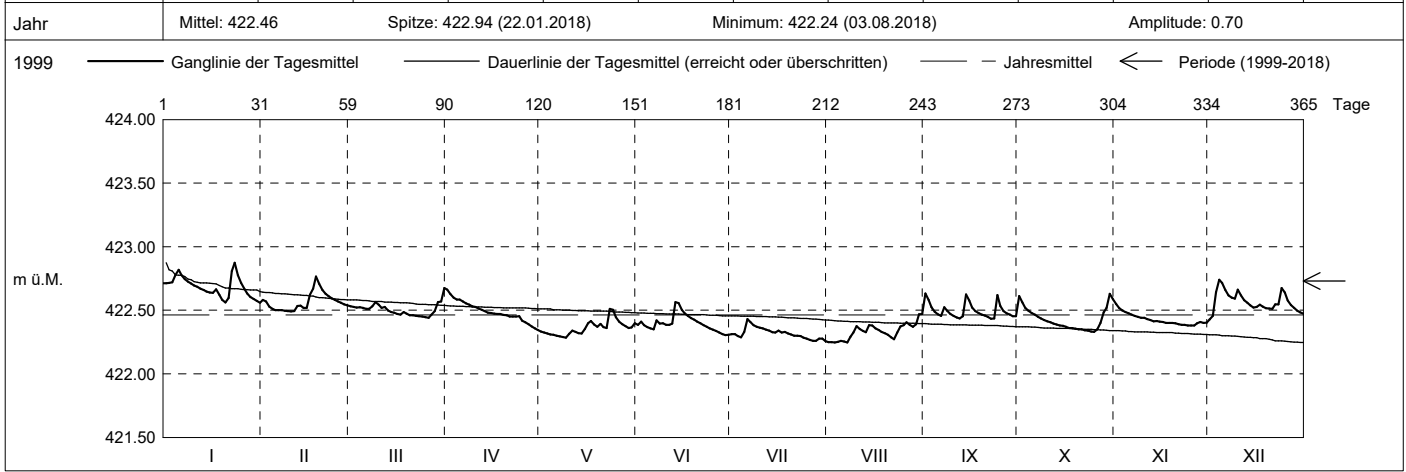
**KANTON ZUG**

Koordinaten: 2'682'004' / 1'225'936'

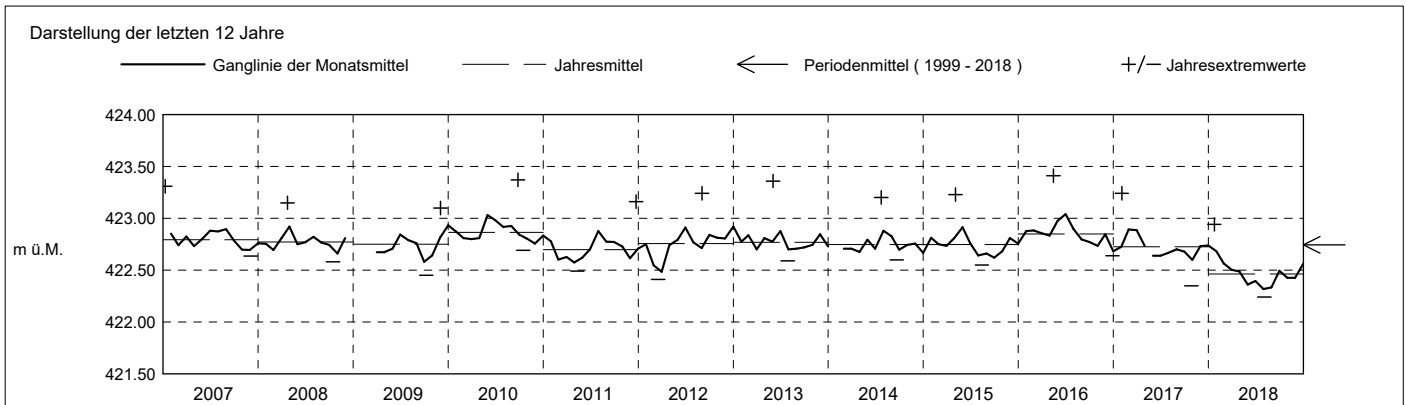
Amt für Umwelt

Abstichpunkt: 426.09 m ü.M. OK Terrain: 424.98 m ü.M.

2018	janvier	février	mars	avril	mai	juin	juillet	août	septembre	octobre	novembre	décembre	
Tagesmittel	1 422.71	422.58	422.53	422.66 +	422.33	422.38	422.31	422.25 -	422.63 +	422.61	422.55 +	422.43 -	1
	2 422.71	422.57	422.52	422.63	422.33	422.41	422.31	422.25 -	422.58	422.56	422.52	422.45	2
	3 422.72	422.53	422.52	422.60	422.32	422.38	422.30	422.25 -	422.52	422.52	422.50	422.64	3
	4 422.78	422.51	422.52	422.58	422.31	422.37	422.29	422.25 -	422.49	422.49	422.49	422.74 +	4
	5 422.82	422.50	422.52	422.58	422.31	422.36	422.33	422.26	422.47	422.48	422.48	422.71	5
	6 422.78	422.50	422.51	422.57	422.30	422.35	422.43 +	422.25 -	422.46	422.46	422.47	422.66	6
	7 422.75	422.50	422.51	422.55	422.30	422.42	422.41	422.25 -	422.52	422.45	422.46	422.62	7
	8 422.73	422.49 -	422.53	422.54	422.29	422.39	422.38	422.29	422.49	422.43	422.45	422.60	8
	9 422.71	422.49 -	422.56	422.53	422.28 -	422.40	422.37	422.33	422.47	422.42	422.44	422.59	9
	10 422.70	422.49 -	422.54	422.53	422.31	422.39	422.36	422.37	422.46	422.41	422.44	422.66	10
	11 422.68	422.49 -	422.52	422.51	422.34	422.39	422.36	422.35	422.44	422.40	422.43	422.62	11
	12 422.67	422.53	422.53	422.50	422.33	422.39	422.35	422.34	422.44	422.40	422.42	422.58	12
m ü.M.	13 422.66	422.54	422.50	422.49	422.32	422.36 +	422.34	422.33	422.45	422.39	422.41	422.56	13
	14 422.65	422.52	422.49	422.48	422.32	422.56 +	422.33	422.38	422.62	422.38	422.41	422.54	14
	15 422.64	422.52	422.48	422.48	422.35	422.50	422.32	422.38	422.58	422.38	422.41	422.52	15
	16 422.64	422.62	422.47	422.47	422.40	422.48	422.34	422.36	422.52	422.37	422.41	422.52	16
	17 422.67	422.67	422.47	422.47	422.41	422.46	422.32	422.35	422.49	422.36	422.40	422.54	17
	18 422.62	422.77 +	422.49	422.47	422.39	422.44	422.33	422.33	422.48	422.36	422.40	422.53	18
	19 422.58	422.71	422.47	422.46	422.37	422.42	422.32	422.32	422.47	422.35	422.40	422.52	19
	20 422.56 -	422.66	422.46	422.46	422.39	422.41	422.31	422.31	422.46	422.35	422.40	422.51	20
	21 422.60	422.63	422.46	422.45	422.37	422.40	422.30	422.29	422.45	422.35	422.39	422.51	21
	22 422.81	422.61	422.46	422.45	422.36	422.38	422.30	422.27	422.43 -	422.34	422.38 -	422.55	22
	23 422.87 +	422.60	422.45	422.45	422.51 +	422.37	422.30	422.33	422.44	422.34	422.38 -	422.55	23
	24 422.77	422.58	422.45	422.45	422.50	422.36	422.29	422.37	422.62	422.33 -	422.38	422.67	24
	25 422.71	422.57	422.45	422.42	422.45	422.35	422.28	422.38	422.53	422.33 -	422.38 -	422.64	25
+ Maximum	26 422.67	422.56	422.44 -	422.40	422.41	422.34	422.27	422.40	422.49	422.35	422.38 -	422.58	26
	27 422.63	422.55	422.47	422.39	422.39	422.32	422.26 -	422.39	422.48	422.40	422.40	422.54	27
- Minimum	28 422.61	422.54	422.49	422.37	422.38	422.31	422.26 -	422.37	422.46	422.48	422.41	422.52	28
	29 422.59	422.57	422.47	422.36	422.36	422.30 -	422.28	422.39	422.45	422.52	422.40	422.50	29
	30 422.57	422.57	422.35 -	422.36	422.31	422.28	422.28	422.47 +	422.45	422.63 +	422.40	422.48	30
	31 422.56 -	422.67 +	422.40	422.40	422.30	422.26 -	422.26 -	422.47 +	422.59	422.59	422.40	422.47	31
Monatsmittel	422.68 +	422.57	422.50	422.49	422.36	422.40	422.32 -	422.33	422.50	422.43	422.43	422.57	m ü.M.
Spitze Datum	422.94 + 22.	422.78 18.	422.70 31.	422.69 1.	422.54 24.	422.66 13.	422.43 - 6.	422.53 31.	422.67 1.	422.65 30.	422.57 1.	422.77 4.	m ü.M.
Amplitude	0.39 +	0.29	0.26	0.35	0.26	0.36	0.18 -	0.29	0.25	0.33	0.19	0.35	m
Jahr	Mittel: 422.46		Spitze: 422.94 (22.01.2018)				Minimum: 422.24 (03.08.2018)				Amplitude: 0.70		



Periode	1999 - 2018 ( 19 Jahre )												
Monatsmittel	422.73	422.71	422.73	422.76	422.78	422.79 +	422.75	422.72	422.70	422.68 -	422.71	422.70	m ü.M.
Monats-Spitze Jahr	423.31 2007	423.24 2017	423.18 - 2017	423.23 2006	423.41 + 2016	423.36 2013	423.28 2016	423.34 2005	423.37 2010	423.20 2012	423.19 2012	423.19 2017	m ü.M.
Monats-Minimum Jahr	422.34 2001	422.30 2001	422.41 + 2012	422.34 2018	422.28 2018	422.30 2018	422.25 2018	422.24 2018	422.27 2004	422.28 2004	422.23 2004	422.19 - 2004	m ü.M.
Monats-Amplitude Jahr	0.63 2007	0.45 - 2017	0.52 2001	0.48 2012	0.61 2016	0.60 2013	0.51 2016	0.59 2005	0.64 2010	0.52 1999	0.51 2012	0.65 + 2011	m ü.M.
Periode	Mittel: 422.73		Spitze: 423.41 (14.05.2016)				Minimum: 422.19 (12.12.2004)				Amplitude: 1.22		



**Grundwasserstände**

**Nr. 1164 GIBZ Berufsschule - Zug**

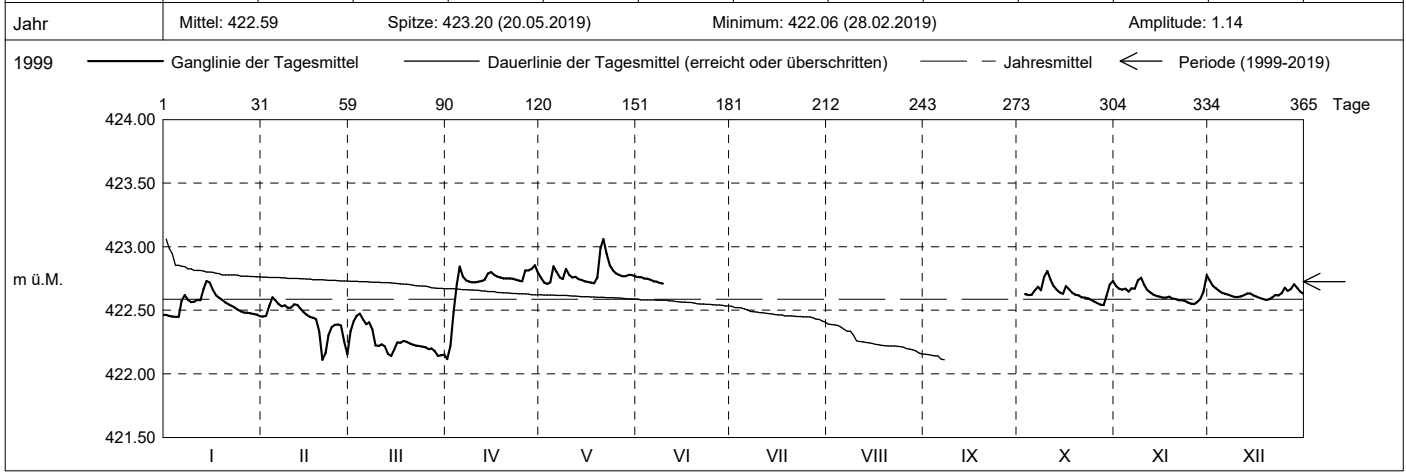
**KANTON ZUG**

Koordinaten: 2'682'004' / 1'225'936'

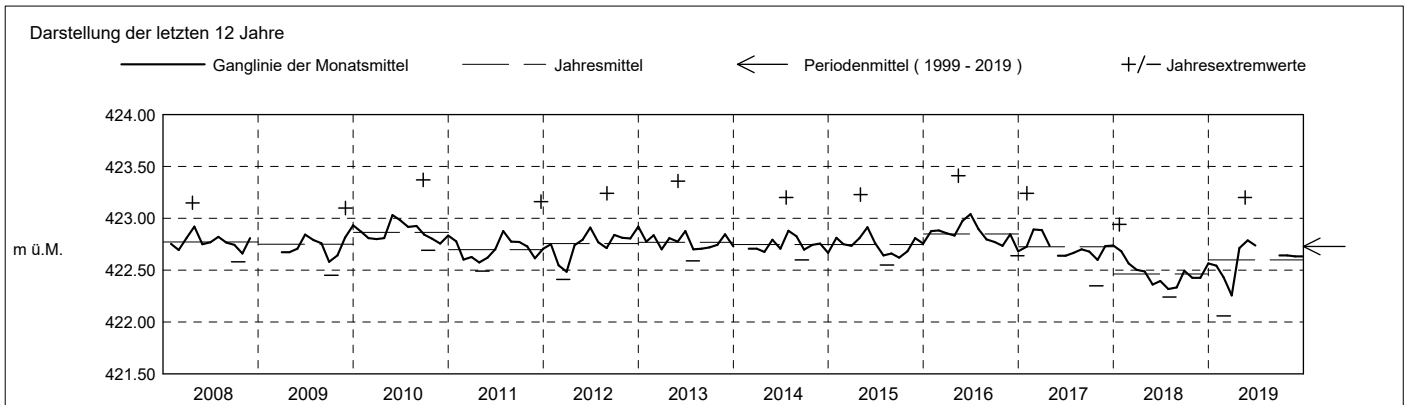
Amt für Umwelt

Abstichpunkt: 426.09 m ü.M. OK Terrain: 424.98 m ü.M.

2019	janvier	février	mars	avril	mai	juin	juillet	août	septembre	octobre	novembre	décembre	
Tagesmittel	1	422.46	422.45	422.33	422.12 -	422.76	422.76 +				422.69	422.74 +	1
	2	422.46	422.46	422.42	422.22	422.72	422.76 +				422.67	422.69	2
	3	422.45 -	422.53	422.46	422.49	422.71 -	422.75			422.63	422.66	422.67	3
	4	422.45 -	422.60 +	422.47 +	422.71	422.72	422.75			422.62	422.67	422.65	4
	5	422.45 -	422.58	422.43	422.84	422.85	422.74			422.62	422.65	422.64	5
	6	422.57	422.55	422.39	422.77	422.80	422.73			422.66	422.67	422.63	6
	7	422.62	422.53	422.40	422.74	422.76	422.73			422.68	422.67	422.62	7
	8	422.58	422.54	422.35	422.72	422.75	422.71 -			422.66	422.73	422.61	8
	9	422.57	422.52	422.22	422.72	422.83	422.71 -			422.76	422.76	422.60	9
	10	422.57	422.52	422.22	422.72	422.78				422.81 +	422.70	422.60	10
m ü.M.	11	422.58	422.55	422.23	422.73	422.76				422.74	422.66	422.61	11
	12	422.58	422.54	422.22	422.73	422.76				422.69	422.64	422.62	12
	13	422.67	422.51	422.16	422.74	422.75				422.66	422.67	422.63	13
	14	422.73 +	422.49	422.14 -	422.79	422.74				422.64	422.61	422.63	14
	15	422.72	422.46	422.19	422.80	422.73				422.63	422.61	422.62	15
	16	422.66	422.45	422.25	422.78	422.72				422.69	422.60	422.61	16
	17	422.62	422.44	422.24	422.77	422.72				422.67	422.60	422.60	17
	18	422.60	422.43	422.26	422.76	422.71 -				422.64	422.61	422.59	18
	19	422.58	422.34	422.25	422.75	422.76				422.62	422.59	422.58 -	19
	20	422.56	422.11 -	422.24	422.75	422.99				422.62	422.59	422.59	20
+ Maximum	21	422.55	422.16	422.23	422.75	423.06 +				422.60	422.58	422.60	21
	22	422.54	422.31	422.22	422.75	422.94				422.60	422.58	422.62	22
	23	422.52	422.37	422.22	422.74	422.85				422.59	422.57	422.62	23
	24	422.50	422.39	422.21	422.73	422.81				422.58	422.56	422.64	24
	25	422.49	422.39	422.21	422.73	422.79				422.57	422.55 -	422.68	25
	26	422.48	422.38	422.19	422.81	422.78				422.56	422.55 -	422.65	26
	27	422.48	422.25	422.20	422.81	422.77				422.54 -	422.56	422.67	27
	28	422.48	422.15	422.18	422.83	422.77				422.54 -	422.59	422.70	28
	29	422.47	422.39	422.14 -	422.85 +	422.78				422.61	422.65	422.68	29
	30	422.46	422.15	422.15	422.80	422.78				422.70	422.78 +	422.65	30
31	422.45 -	422.15	422.15	422.77	422.77				422.73	422.78 +	422.63	31	
Monatsmittel	422.54	422.43	422.26 -	422.71	422.79 +	422.74				422.64	422.63	422.63	m ü.M.
Spitze Datum	422.74 14.	422.61 4.	422.48 - 4.	422.90 4.	423.20 + 20.	422.77 1.				422.86 9.	422.79 30.	422.76 1.	m ü.M.
Amplitude	0.30	0.55	0.34	0.81 +	0.50	0.06 -				0.32	0.24	0.18	m
Jahr	Mittel: 422.59      Spitze: 423.20 (20.05.2019)      Minimum: 422.06 (28.02.2019)      Amplitude: 1.14												



Periode	1999 - 2019 (20 Jahre)												
Monatsmittel	422.72	422.69	422.71	422.76	422.78	422.79 +	422.75	422.72	422.70	422.68 -	422.71	422.70	m ü.M.
Monats-Spitze Jahr	423.31 2007	423.24 2017	423.18 - 2017	423.23 2006	423.41 + 2016	423.36 2013	423.28 2016	423.34 2005	423.37 2010	423.20 2012	423.19 2012	423.19 2017	m ü.M.
Monats-Minimum Jahr	422.34 + 2001	422.06 - 2019	422.14 2019	422.09 2019	422.28 2018	422.30 2018	422.25 2018	422.24 2018	422.27 2004	422.28 2004	422.23 2004	422.19 2004	m ü.M.
Monats-Amplitude Jahr	0.63 2007	0.55 2019	0.52 2001	0.81 + 2019	0.61 2016	0.60 2013	0.51 - 2016	0.59 2005	0.64 2010	0.52 1999	0.51 - 2012	0.65 2011	m ü.M.
Periode	Mittel: 422.73      Spitze: 423.41 (14.05.2016)      Minimum: 422.06 (28.02.2019)      Amplitude: 1.35												



**Grundwasserstände**

**Nr. 1164 GIBZ Berufsschule - Zug**

**KANTON ZUG**

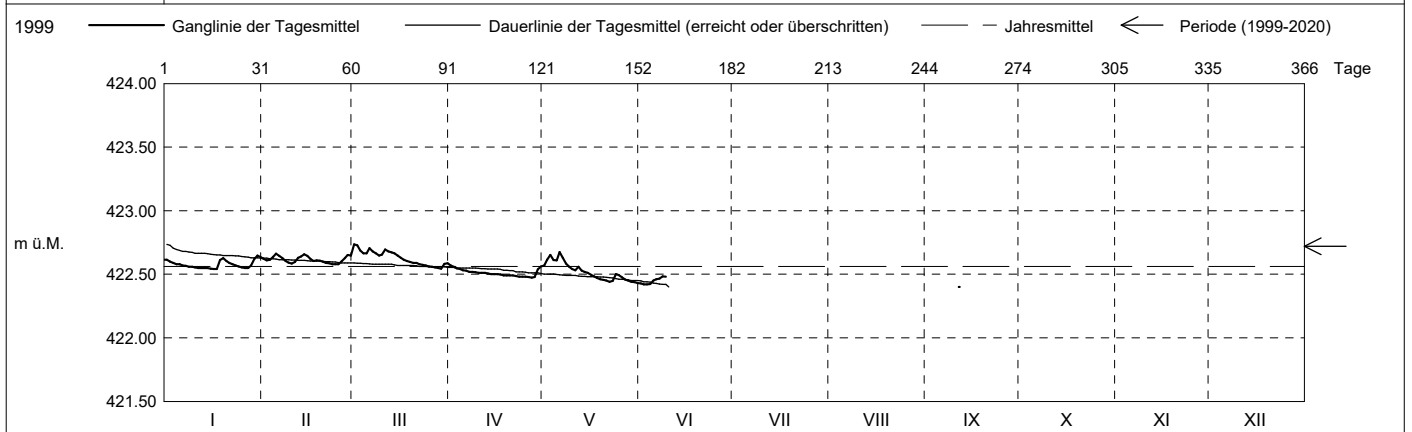
Koordinaten: 2'682'004' / 1'225'936'

Amt für Umwelt

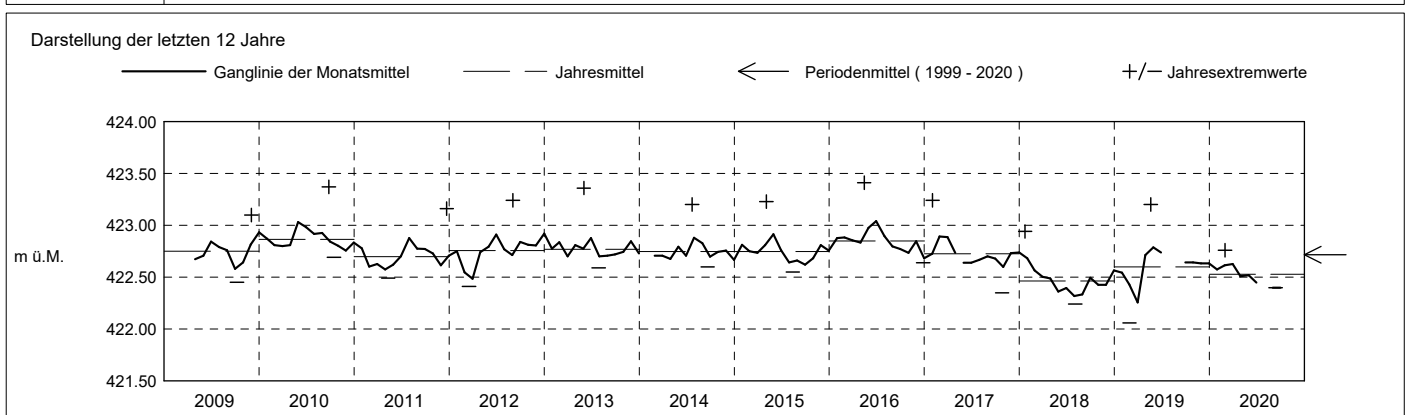
Abstichpunkt: 426.09 m ü.M. OK Terrain: 424.98 m ü.M.

2020		janvier	février	mars	avril	mai	juin	juillet	août	septembre	octobre	novembre	décembre		
Tagesmittel	1	422.61	422.62	422.74 +	422.57 +	422.57	422.43							1	
	2	422.60	422.61	422.73	422.56	422.61	422.42 -							2	
	3	422.59	422.61	422.69	422.55	422.65	422.42 -							3	
	4	422.58	422.64	422.67	422.54	422.61	422.42 -							4	
	5	422.58	422.66 +	422.66	422.53	422.61	422.45							5	
	6	422.57	422.64	422.70	422.53	422.67 +	422.46							6	
	7	422.57	422.63	422.68	422.52	422.63	422.47							7	
	8	422.56	422.60	422.66	422.52	422.58	422.48 +							8	
	9	422.56	422.59	422.65	422.52	422.56	422.48 +							9	
	10	422.55	422.58 -	422.65	422.51	422.54								10	
m ü.M.	11	422.55	422.60	422.70	422.51	422.53			422.40 -					11	
	12	422.55	422.63	422.68	422.51	422.56								12	
	13	422.55	422.64	422.67	422.51	422.53								13	
	14	422.55	422.66 +	422.66	422.50	422.52								14	
	15	422.54 -	422.64	422.65	422.50	422.51								15	
	16	422.54 -	422.62	422.63	422.50	422.50								16	
	17	422.54 -	422.60	422.61	422.50	422.48								17	
	18	422.61	422.61	422.60	422.49	422.47								18	
	19	422.63	422.61	422.60	422.49	422.46								19	
	20	422.60	422.60	422.59	422.49	422.46								20	
+ Maximum	21	422.59	422.59	422.59	422.49	422.45								21	
	22	422.58	422.59	422.58	422.49	422.44								22	
	23	422.57	422.58 -	422.57	422.48	422.45								23	
	24	422.56	422.58 -	422.57	422.48	422.50								24	
	25	422.55	422.58 -	422.56	422.48	422.49								25	
	- Minimum	26	422.55	422.60	422.56	422.48	422.48								26
		27	422.55	422.63	422.55	422.47 -	422.46								27
		28	422.57	422.65	422.55	422.48	422.45								28
		29	422.62	422.65	422.54 -	422.44	422.44								29
		30	422.65 +		422.58	422.56	422.44								30
31		422.63		422.59		422.43 -								31	
Monatsmittel	422.58	422.62	422.63 +	422.51	422.52	422.45			422.40 -					m ü.M.	
Spitze Datum	422.65 30.	422.67 5.	422.76 + 1.	422.58 1.	422.68 6.	422.49 8.			422.40 - 11.					m ü.M.	
Amplitude	0.11	0.10	0.22	0.11	0.25 +	0.07			0.00 -					m	

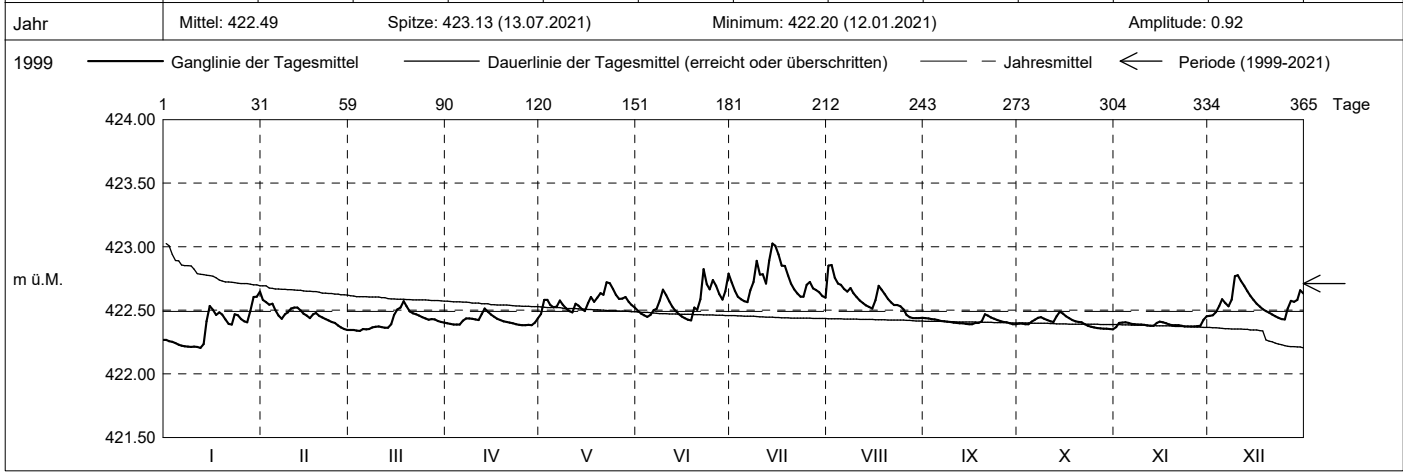
Jahr Mittel: 422.56 Spitze: 422.76 (01.03.2020) Minimum: 422.40 (11.09.2020) Amplitude: 0.36



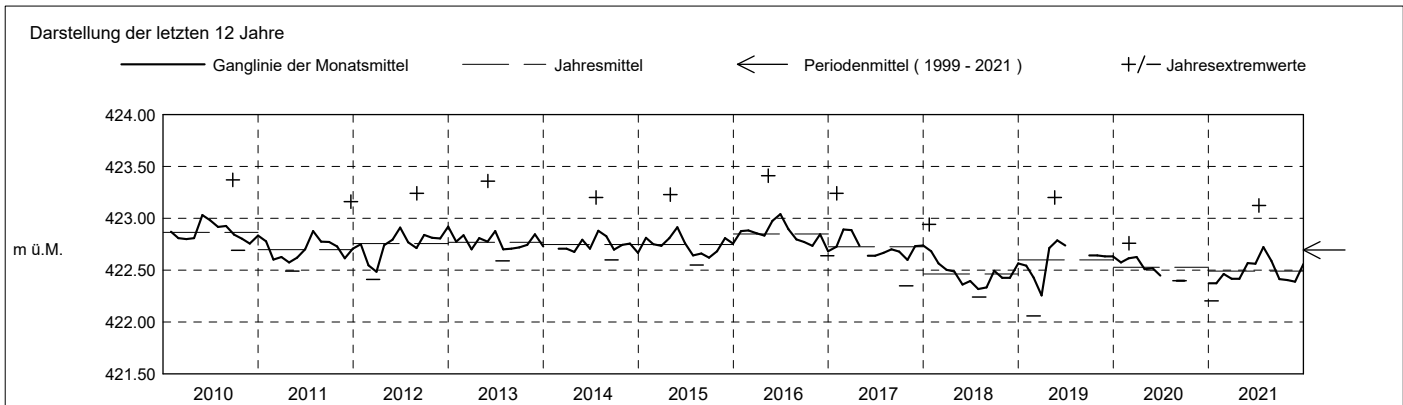
Periode	1999 - 2020 ( 21 Jahre )												
Monatsmittel	422.71	422.69	422.70	422.74	422.77 +	422.77 +	422.75	422.72	422.69	422.68 -	422.71	422.70	m ü.M.
Monats-Spitze Jahr	423.31 2007	423.24 2017	423.18 - 2017	423.23 2006	423.41 + 2016	423.36 2013	423.28 2016	423.34 2005	423.37 2010	423.20 2012	423.19 2012	423.19 2017	m ü.M.
Monats-Minimum Jahr	422.34 + 2001	422.06 - 2019	422.14 2019	422.09 2019	422.28 2018	422.30 2018	422.25 2018	422.24 2018	422.27 2004	422.28 2004	422.23 2004	422.19 2004	m ü.M.
Monats-Amplitude Jahr	0.63 2007	0.55 2019	0.52 2001	0.81 + 2019	0.61 2016	0.60 2013	0.51 - 2016	0.59 2005	0.64 2010	0.52 1999	0.51 - 2012	0.65 2011	m ü.M.
Periode	Mittel: 422.72		Spitze: 423.41 (14.05.2016)				Minimum: 422.06 (28.02.2019)				Amplitude: 1.35		



2021	janvier	février	mars	avril	mai	juin	juillet	août	septembre	octobre	novembre	décembre	
Tagesmittel	1 422.27	422.58 +	422.34 -	422.40	422.47 -	422.50	422.72	422.85	422.44	422.39	422.37 -	422.46	1
	2 422.26	422.56	422.34 -	422.39	422.58	422.47	422.65	422.86 +	422.43	422.39	422.40	422.46	2
	3 422.25	422.54	422.34 -	422.39	422.58	422.46	422.61	422.75	422.43	422.39	422.40	422.49	3
	4 422.24	422.55	422.34 -	422.39	422.54	422.45	422.59	422.71	422.43	422.39	422.40	422.53	4
	5 422.23	422.50	422.35	422.39	422.52	422.46	422.57	422.70	422.42	422.41	422.40	422.59	5
	6 422.22	422.46	422.35	422.42	422.53	422.50	422.56 -	422.67	422.42	422.43	422.39	422.56	6
	7 422.22	422.43	422.35	422.44	422.58	422.51	422.66	422.65	422.41	422.44	422.39	422.53	7
	8 422.21	422.47	422.36	422.44	422.54	422.58	422.72	422.67	422.41	422.44	422.39	422.58	8
	9 422.21	422.48	422.37	422.43	422.52	422.66	422.89	422.63	422.41	422.43	422.39	422.77 +	9
	10 422.21	422.51	422.37	422.43	422.49	422.62	422.78	422.60	422.40	422.42	422.38	422.77 +	10
	11 422.21	422.52	422.37	422.42	422.48	422.57	422.78	422.58	422.40	422.41	422.38	422.73	11
	12 422.20 -	422.52	422.36	422.47	422.55	422.53	422.71	422.56	422.40	422.41	422.38	422.69	12
	13 422.23	422.50	422.36	422.51 +	422.54	422.50	422.89	422.54	422.40	422.45	422.38	422.65	13
m ü.M.	14 422.41	422.47	422.39	422.49	422.51	422.47	423.03 +	422.52	422.39 -	422.49 +	422.40	422.61	14
	15 422.53	422.46	422.46	422.47	422.49	422.45	423.01	422.51	422.39 -	422.47	422.41	422.58	15
	16 422.50	422.44	422.51	422.45	422.56	422.44	422.94	422.58	422.39 -	422.45	422.41	422.55	16
	17 422.46	422.47	422.52	422.43	422.60	422.43	422.85	422.69	422.40	422.44	422.40	422.53	17
	18 422.48	422.48	422.57 +	422.42	422.57	422.42 -	422.85	422.66	422.40	422.42	422.39	422.51	18
	19 422.47	422.46	422.53	422.41	422.60	422.52	422.77	422.63	422.41	422.41	422.38	422.49	19
	20 422.43	422.44	422.49	422.41	422.64	422.50	422.71	422.59	422.47 +	422.41	422.38	422.48	20
	21 422.39	422.43	422.48	422.40	422.62	422.59	422.66	422.56	422.46	422.40	422.38	422.47	21
	22 422.39	422.42	422.47	422.40	422.72 +	422.82 +	422.63	422.54	422.44	422.39	422.38	422.45	22
	23 422.47	422.41	422.46	422.39	422.71	422.70	422.61	422.54	422.43	422.38	422.37 -	422.44	23
	24 422.46	422.40	422.45	422.39	422.67	422.67	422.61	422.53	422.42	422.37	422.37 -	422.43 -	24
	25 422.43	422.38	422.43	422.38 -	422.62	422.74	422.70	422.51	422.41	422.37	422.37 -	422.43 -	25
+ Maximum	26 422.41	422.36	422.42	422.38 -	422.59	422.69	422.72	422.46	422.41	422.36	422.37 -	422.51	26
	27 422.41	422.35 -	422.43	422.39	422.59	422.63	422.67	422.45	422.40	422.36	422.38	422.57	27
- Minimum	28 422.50	422.35 -	422.43	422.38 -	422.60	422.58	422.66	422.44 -	422.40	422.35 -	422.38	422.57	28
	29 422.60		422.42	422.40	422.57	422.65	422.64	422.44 -	422.39 -	422.35 -	422.43	422.58	29
	30 422.61		422.41	422.44	422.54	422.79	422.61	422.44 -	422.39 -	422.35 -	422.45 +	422.66	30
	31 422.65 +		422.40		422.52		422.60	422.44 -		422.35 -		422.63	31
Monatsmittel	422.37 -	422.46	422.42	422.42	422.57	422.56	422.72 +	422.59	422.41	422.40	422.39	422.56	m ü.M.
Spitze Datum	422.68 31.	422.60 1.	422.58 18.	422.52 13.	422.73 22.	422.89 22.	423.13 + 13.	422.93 1.	422.47 20.	422.49 14.	422.46 - 30.	422.82 9.	m ü.M.
Amplitude	0.47	0.26	0.24	0.14	0.28	0.48	0.58 +	0.49	0.09 -	0.14	0.11	0.39	m
Jahr	Mittel: 422.49		Spitze: 423.13 (13.07.2021)				Minimum: 422.20 (12.01.2021)				Amplitude: 0.92		



Periode	1999 - 2021 ( 22 Jahre )												
Monatsmittel	422.70	422.68	422.69	422.73	422.76 +	422.76 +	422.75	422.71	422.67 -	422.67 -	422.69	422.69	m ü.M.
Monats-Spitze Jahr	423.31 2007	423.24 2017	423.18 - 2017	423.23 2006	423.41 + 2016	423.36 2013	423.28 2016	423.34 2005	423.37 2010	423.20 2012	423.19 2012	423.19 2017	m ü.M.
Monats-Minimum Jahr	422.20 2021	422.06 - 2019	422.14 2019	422.09 2019	422.28 2018	422.30 + 2018	422.25 2018	422.24 2018	422.27 2004	422.28 2004	422.23 2004	422.19 2004	m ü.M.
Monats-Amplitude Jahr	0.63 2007	0.55 2019	0.52 2001	0.81 + 2019	0.61 2016	0.60 2013	0.58 2021	0.59 2005	0.64 2010	0.52 1999	0.51 - 2012	0.65 2011	m ü.M.
Periode	Mittel: 422.71		Spitze: 423.41 (14.05.2016)				Minimum: 422.06 (28.02.2019)				Amplitude: 1.35		



**Grundwasserstände**

**Nr. 1164 GIBZ Berufsschule - Zug**

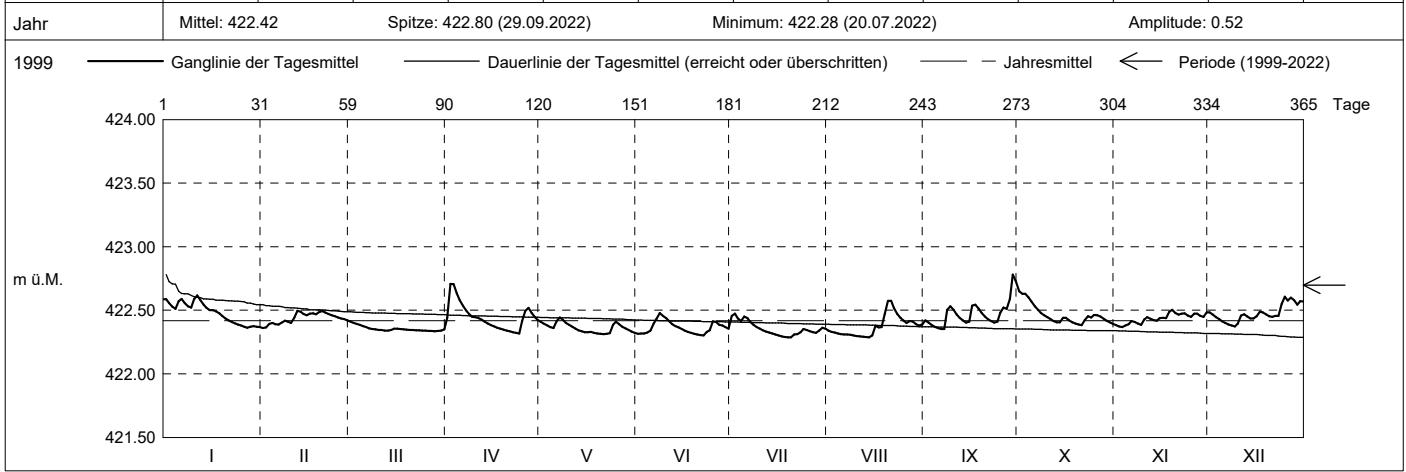
**KANTON ZUG**

Koordinaten: 2'682'004' / 1'225'936'

Amt für Umwelt

Abstichpunkt: 426.09 m ü.M. OK Terrain: 424.98 m ü.M.

2022	janvier	février	mars	avril	mai	juin	juillet	août	septembre	octobre	novembre	décembre		
Tagesmittel	1	422.59	422.36 -	422.41 +	422.44	422.41	422.31	422.46	422.34	422.42	422.65 +	422.38	422.48	1
	2	422.56	422.36 -	422.40	422.71 +	422.39	422.32	422.47 +	422.33	422.40	422.63	422.37 -	422.46	2
	3	422.53	422.39	422.39	422.71 +	422.38	422.32	422.44	422.32	422.39	422.63	422.37 -	422.45	3
	4	422.51	422.40	422.38	422.63	422.37	422.32	422.41	422.32	422.37	422.60	422.38	422.43	4
	5	422.57	422.39	422.37	422.58	422.36	422.34	422.45	422.31	422.36	422.57	422.39	422.41	5
	6	422.59	422.39	422.37	422.54	422.42	422.39	422.44	422.31	422.35 -	422.53	422.41	422.40	6
	7	422.56	422.40	422.36	422.50	422.44 +	422.43	422.41	422.31	422.35 -	422.50	422.41	422.39	7
	8	422.53	422.42	422.35	422.47	422.42	422.48 +	422.39	422.31	422.35 -	422.48	422.39	422.38	8
	9	422.52	422.41	422.35	422.45	422.40	422.46	422.37	422.30	422.53	422.46	422.39	422.37 -	9
	10	422.59	422.40	422.35	422.45	422.38	422.44	422.35	422.30	422.50	422.45	422.43	422.39	10
m ü.M.	11	422.62 +	422.44	422.34 -	422.44	422.37	422.41	422.34	422.30	422.46	422.43	422.44	422.46	11
	12	422.58	422.50 +	422.34 -	422.43	422.35	422.39	422.33	422.29 -	422.44	422.42	422.43	422.47	12
	13	422.54	422.49	422.34 -	422.41	422.34	422.38	422.32	422.29 -	422.42	422.41	422.42	422.45	13
	14	422.52	422.47	422.34 -	422.40	422.33	422.36	422.32	422.29 -	422.40	422.41	422.42	422.43	14
	15	422.50	422.46	422.36	422.38	422.33	422.35	422.31	422.30	422.41	422.44	422.44	422.43	15
	16	422.50	422.47	422.35	422.37	422.33	422.34	422.30	422.38	422.54	422.44	422.44	422.45	16
	17	422.49	422.48	422.35	422.36	422.33	422.33	422.29 -	422.36	422.54	422.42	422.44	422.49	17
	18	422.48	422.47	422.35	422.35	422.32	422.32	422.29 -	422.37	422.51	422.40	422.49	422.48	18
	19	422.45	422.49	422.35	422.35	422.32	422.32	422.29 -	422.47	422.48	422.40	422.50 +	422.47	19
	20	422.44	422.49	422.35	422.34	422.31 -	422.31	422.29 -	422.57 +	422.45	422.39	422.48	422.45	20
+ Maximum	21	422.42	422.48	422.34 -	422.33	422.31 -	422.30 -	422.31	422.57 +	422.43	422.38 -	422.46	422.45	21
	22	422.41	422.47	422.34 -	422.33	422.32	422.30 -	422.31	422.52	422.41	422.42	422.47	422.45	22
	23	422.40	422.46	422.34 -	422.32 -	422.32	422.33	422.33	422.47	422.40	422.45	422.48	422.46	23
	24	422.39	422.45	422.34 -	422.32 -	422.38	422.34	422.35	422.44	422.41	422.44	422.46	422.55	24
	25	422.38	422.44	422.34 -	422.42	422.41	422.41	422.35	422.42	422.48	422.46	422.45	422.61 +	25
	26	422.37	422.44	422.34 -	422.50	422.39	422.41	422.33	422.40	422.52	422.46	422.47	422.58	26
	27	422.36 -	422.43	422.34 -	422.52	422.37	422.39	422.33	422.42	422.51	422.45	422.47	422.60	27
	28	422.37	422.42	422.34 -	422.48	422.36	422.38	422.32	422.41	422.59	422.43	422.46	422.58	28
	29	422.38	422.42	422.34 -	422.45	422.34	422.37	422.34	422.39	422.78 +	422.42	422.45	422.54	29
	30	422.37	422.42	422.34 -	422.42	422.33	422.35	422.36	422.38	422.73	422.40	422.48	422.57	30
31	422.37	422.42	422.35	422.32	422.32	422.32	422.35	422.39	422.39	422.39	422.48	422.57	31	
Monatsmittel	422.48 +	422.44	422.35 -	422.45	422.36	422.36	422.35 -	422.37	422.47	422.46	422.44	422.47	m ü.M.	
Spitze Datum	422.63 11.	422.50 12.	422.42 - 1.	422.76 2.	422.45 7.	422.48 8.	422.49 1.	422.59 21.	422.80 + 29.	422.68 1.	422.51 18.	422.61 25.	m ü.M.	
Amplitude	0.27	0.14	0.08 -	0.45 +	0.13	0.18	0.20	0.31	0.45 +	0.30	0.15	0.24	m	
Jahr	Mittel: 422.42      Spitze: 422.80 (29.09.2022)      Minimum: 422.28 (20.07.2022)      Amplitude: 0.52													



Periode	1999 - 2022 ( 23 Jahre )												
Monatsmittel	422.69	422.67	422.68	422.72	422.74	422.75 +	422.73	422.70	422.66 -	422.66 -	422.68	422.68	m ü.M.
Monats-Spitze Jahr	423.31 2007	423.24 2017	423.18 - 2017	423.23 2006	423.41 + 2016	423.36 2013	423.28 2016	423.34 2005	423.37 2010	423.20 2012	423.19 2012	423.19 2017	m ü.M.
Monats-Minimum Jahr	422.20 2021	422.06 - 2019	422.14 2019	422.09 2019	422.28 2018	422.30 + 2018	422.25 2018	422.24 2018	422.27 2004	422.28 2004	422.23 2004	422.19 2004	m ü.M.
Monats-Amplitude Jahr	0.63 2007	0.55 2019	0.52 2001	0.81 + 2019	0.61 2016	0.60 2013	0.58 2021	0.59 2005	0.64 2010	0.52 1999	0.51 - 2012	0.65 2011	m ü.M.
Periode	Mittel: 422.70      Spitze: 423.41 (14.05.2016)      Minimum: 422.06 (28.02.2019)      Amplitude: 1.35												

